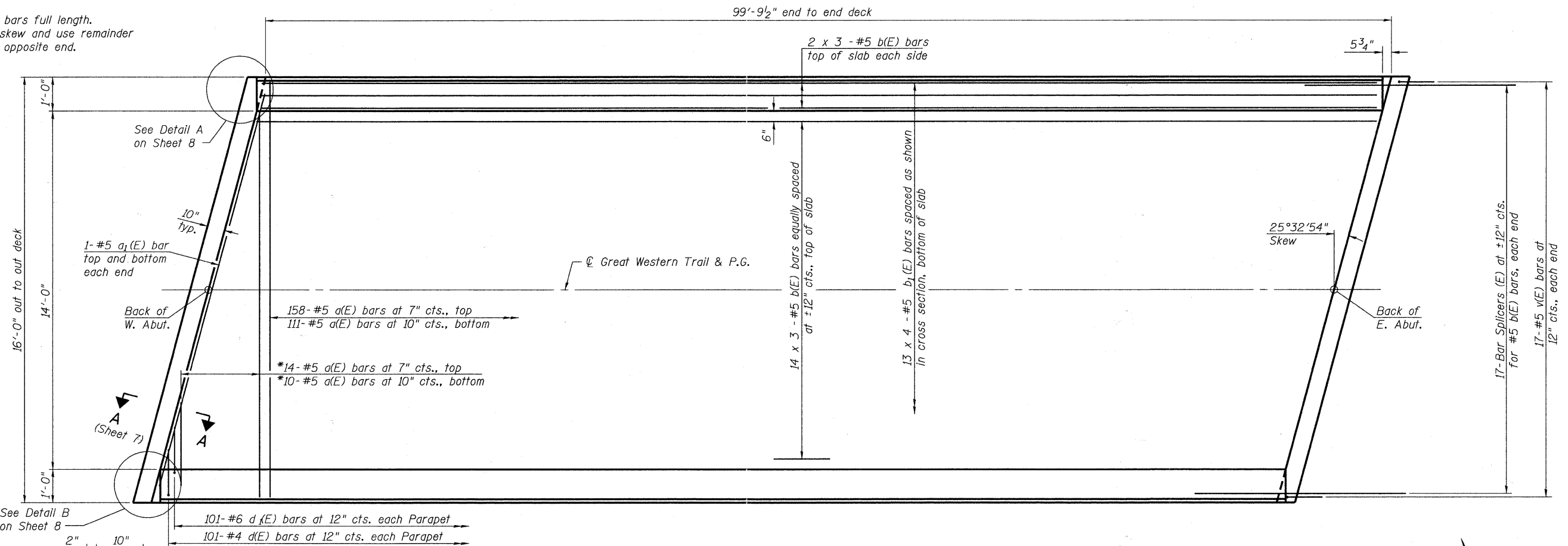
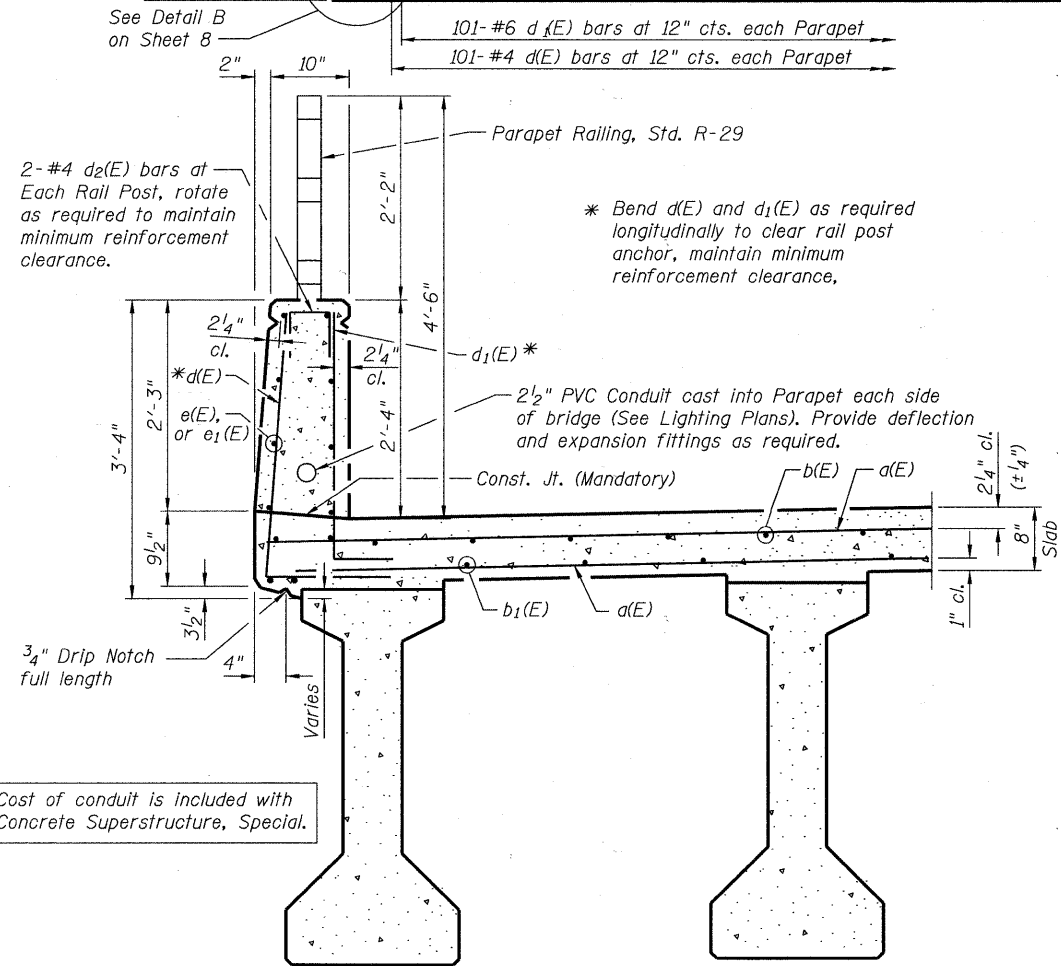


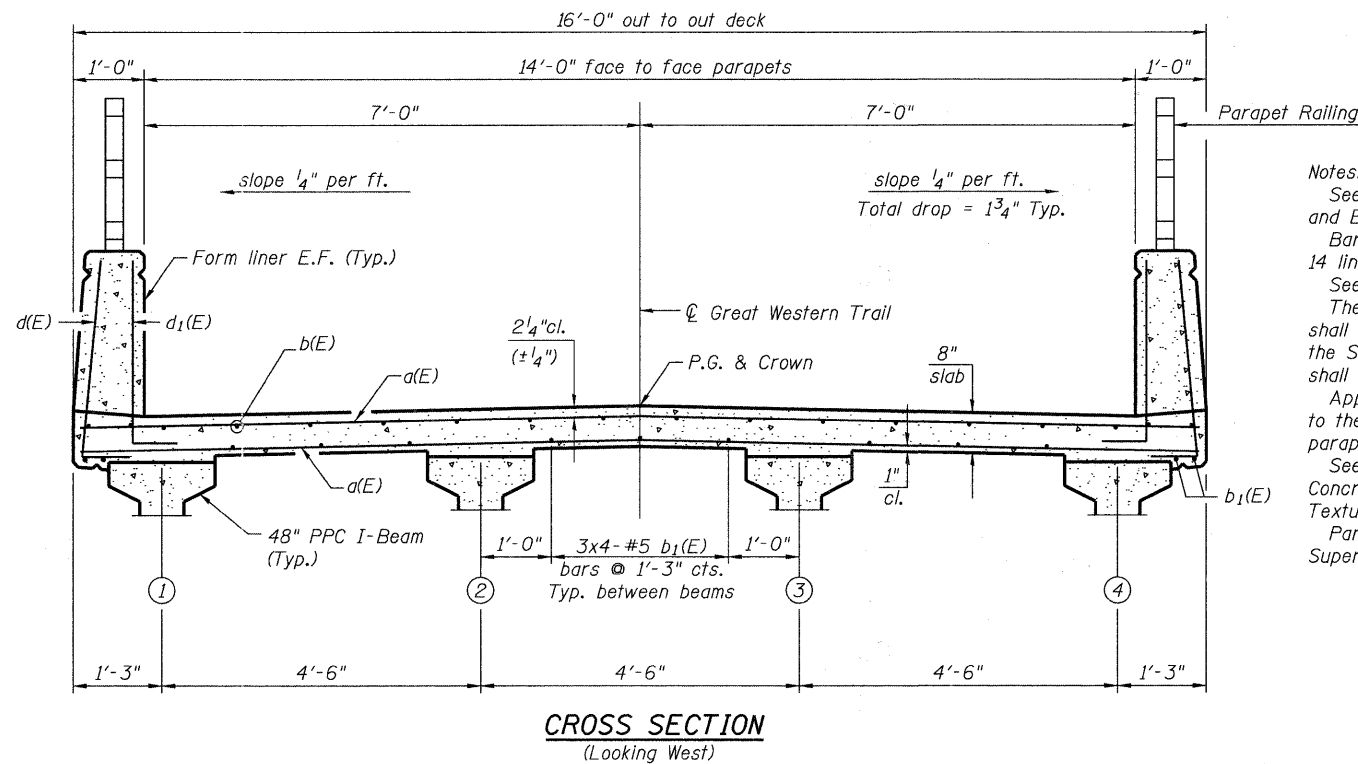
Order a(E) bars full length.
Cut to fit skew and use remainder
of bars in opposite end.



PLAN



SECTION THRU PARAPET



CROSS SECTION
(Looking West)

Notes:
See Sheet 8 of 29 for superstructure details and Bill of Material.
Bars indicated thus 14 x 3-#5 etc. indicates 14 lines of bars with 3 lengths per line.
See Sheet 8 of 29 for parapet reinforcement.
The top surface of the deck between parapets shall be finished according to Article 423.06 of the Standard Specifications, except the surface shall be divided by grooves.
Application of Protective Coat shall be limited to the top surface of the bridge deck between parapets.
See Architectural Treatment sheet for limits of Concrete Superstructure, Special and Form Liner Textured Surface, Special.
Parapet concrete to be paid for as Concrete Superstructure, Special.

MIN. BAR LAP
#5 bar = 3'-3"

FILE NAME = s:\7556-084.Lombard - gwt.Bridges phase 1\Road sheets\structural\ST CHARLES\0223121-006-SUP_STRUC_PLAN.dgn

Bollinger, Lach & Associates, Inc.
ITASCA, ILLINOIS

USER NAME = gonzaio
DESIGNED SRT
CHECKED JJI
PLOT SCALE =
DRAWN GM
PLOT DATE = 7/26/2011
CHECKED JJI

REVISER -
REVISER -
REVISER -
REVISER -

**STATE OF ILLINOIS
GREAT WESTERN TRAIL
ST. CHARLES ROAD**

**SUPERSTRUCTURE PLAN AND SECTION
STRUCTURE NO. 022-3121**

SHEET NO. 6 OF 29 SHEETS

F.A. RTE.	SECTION	COUNTY	TOTAL SHEETS	SHEET NO.
	06-00151-00-BR	DuPAGE	201	123
			CONTRACT NO. 63568	
ILLINOIS FED. AID PROJECT				