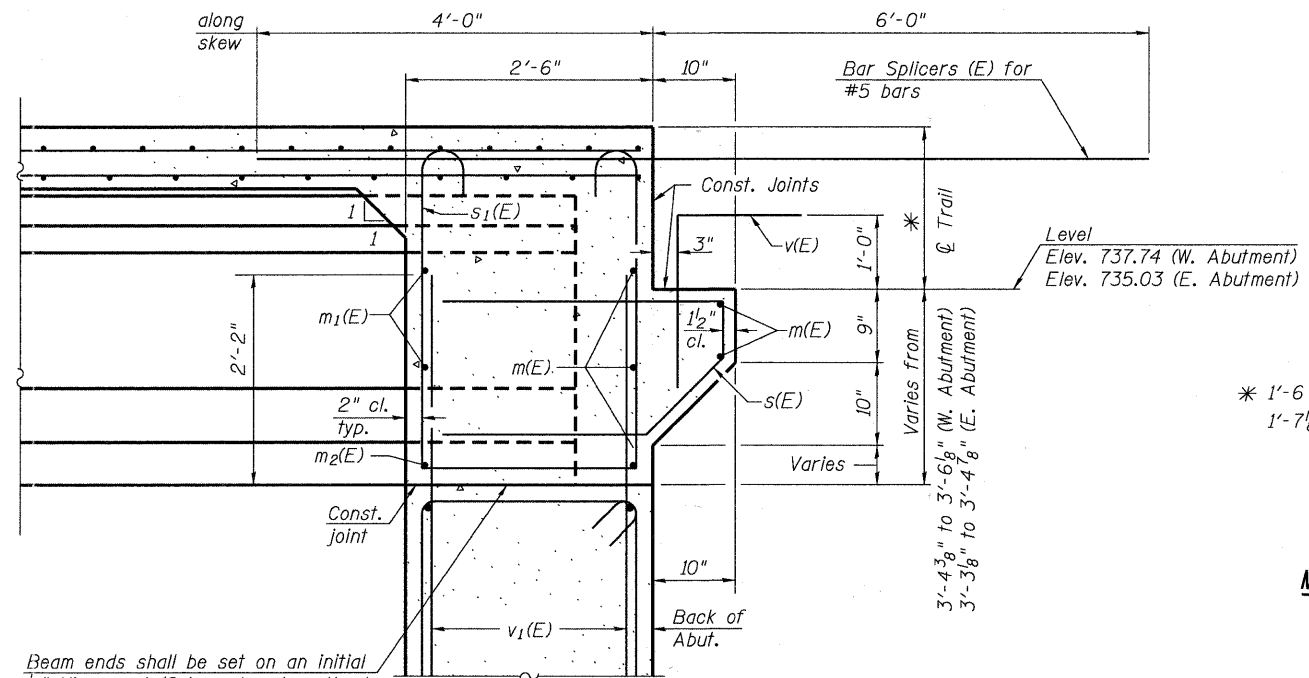


DIAPHRAGM ELEVATION AT ABUTMENT

Notes:
 Reinforcement bars in diaphragm are billed with superstructure on sheet 8 of 29.
 Concrete in diaphragm is included with Concrete Superstructure on sheet 8 of 29.
 For details of bars s(E) and s₁(E), see sheet 8 of 29.
 The s(E) and s₁(E) bars shall be placed parallel to the beams.
 Spacing for these bars shall be at right angles to the beams.



Beam ends shall be set on an initial 1/2" Min. grout (2:1 sand and portland cement, very dry mix) to provide full bearing. Any excess grout squeezed out from under the beam shall be removed. Cost included with Concrete Structures.

SECTION A-A

Dimensions at right angles to abutment, except as shown.

FILE NAME = w:\756-004.lombard - gwt.bridges.phase 1\load sheets\structural\ST CHARLES\0223121-007-DIAPHRAGM AND DETAIL.dgn



USER NAME = gonzo	DESIGNED SRT	REVISED -
PLOT SCALE =	CHECKED JJI	REVISED -
PLOT DATE = 7/26/2011	DRAWN GM	REVISED -
	CHECKED JJI	REVISED -

**STATE OF ILLINOIS
 GREAT WESTERN TRAIL
 ST. CHARLES ROAD**

**INTEGRAL ABUTMENT DIAPHRAGM DETAILS
 STRUCTURE NO. 022-3121**

SHEET NO. 7 OF 29 SHEETS

F.A. RTE.	SECTION	COUNTY	TOTAL SHEETS	SHEET NO.
	06-00151-00-BR	DuPAGE	201	124
			CONTRACT NO. 63568	
ILLINOIS FED. AID PROJECT				