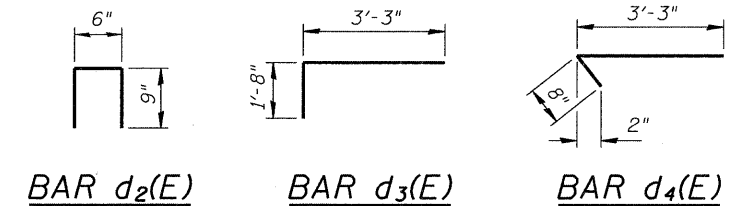
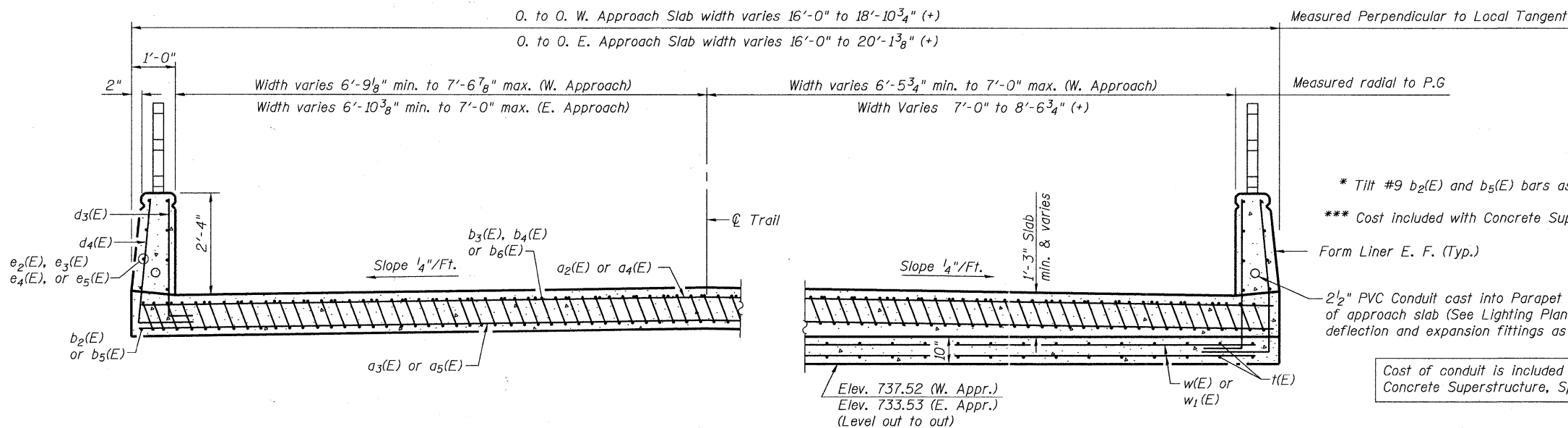


Notes:

Approach slab concrete shall be paid for as Concrete Superstructure. Parapet concrete to be paid for as Concrete Superstructure, Special. Approach footing concrete shall be paid for as Concrete Structures. Reinforcement shall be paid for as Reinforcement Bars, Epoxy Coated. For v(E) bar details, see sheet 8 of 29. The approach footing maximum applied service bearing pressure (Q_{max}) = 2.0 ksf. For bar splicer details, see sheet 20 of 29. Cost of excavation for approach footing included with Concrete Structures. For Porous Granular Embankment (Special) and drainage treatment details, see sheet 2 of 29. For additional parapet details, see sheet 8 of 29. The top surface of the approach slab between parapets shall be finished according to Article 423.06 of the Standard Specifications, except the surface shall be divided by grooves. Application of Protective Coat shall be limited to the top surface of the approach slab between parapets. See Architectural Treatment sheet for limits of Concrete Superstructure, Special and Form Liner Textured Surface, Special.



* Tilt #9 $b_2(E)$ and $b_5(E)$ bars as required to maintain clearance.

*** Cost included with Concrete Superstructure.

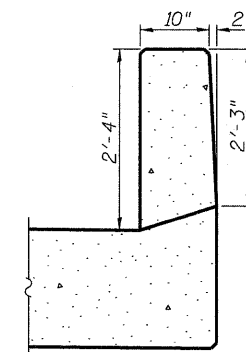
Form Liner E. F. (Typ.)

2 1/2" PVC Conduit cast into Parapet each side of approach slab (See Lighting Plans). Provide deflection and expansion fittings as required.

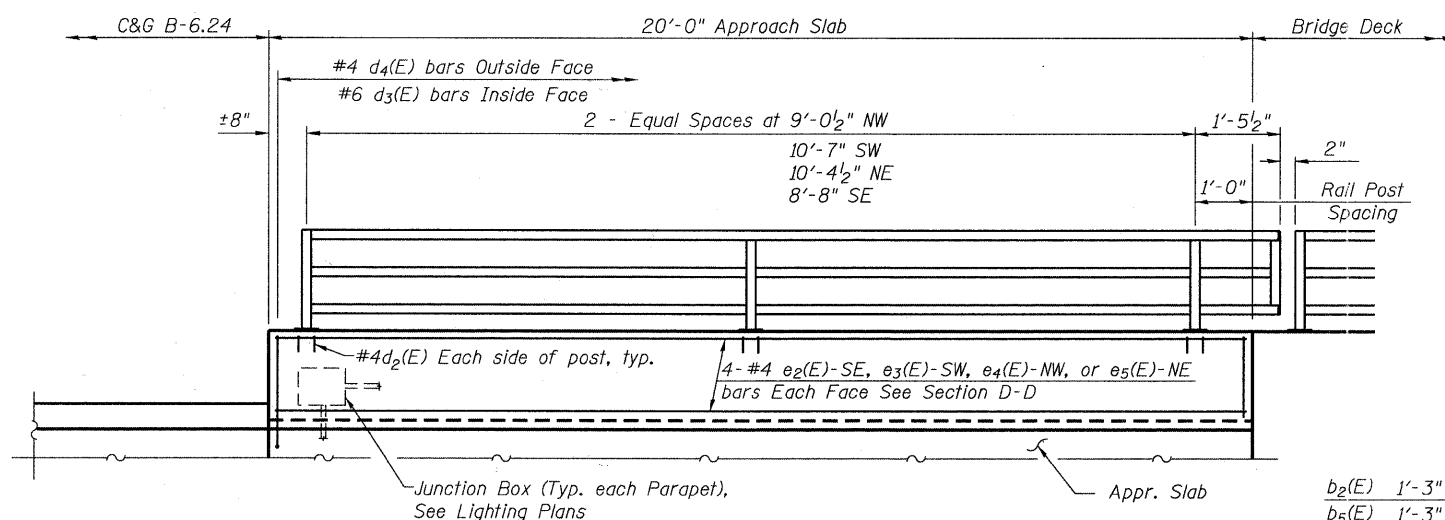
Cost of conduit is included with Concrete Superstructure, Special.

**TWO APPROACHES
BILL OF MATERIAL**

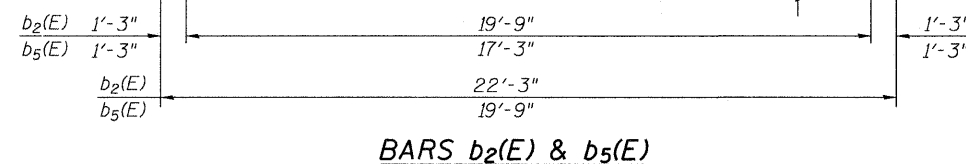
Bar	No.	Size	Length	Shape
$a_2(E)$	30	#4	11'-1"	—
$a_3(E)$	56	#5	11'-3"	—
$a_4(E)$	34	#4	12'-4"	—
$a_5(E)$	62	#5	13'-0"	—
$b_2(E)$	20	#9	22'-3"	—
$b_3(E)$	14	#4	19'-8"	—
$b_4(E)$	3	#4	22'-4"	—
$b_5(E)$	21	#9	19'-9"	—
$b_6(E)$	15	#4	19'-8"	—
$d_2(E)$	24	#4	2'-0"	—
$d_3(E)$	90	#6	4'-11"	—
$d_4(E)$	90	#4	3'-11"	—
$e_2(E)$	4	#4	19'-8"	—
$e_3(E)$	4	#4	22'-4"	—
$e_4(E)$	4	#4	20'-9"	—
$e_5(E)$	4	#4	21'-11"	—
$t(E)$	38	#4	6'-4"	—
$t_1(E)$	42	#4	6'-3"	—
$w(E)$	24	#5	20'-7"	—
$w_1(E)$	24	#4	22'-0"	—
Concrete Superstructure			Cu. Yd.	33.6
Concrete Superstructure, Special			Cu. Yd.	6.9
Concrete Structures			Cu. Yd.	8.1
Reinforcement Bars, Epoxy Coated			Pound	6,950
Anti-Graffiti Protection System			Sq. Ft.	472
Protective Coat			Sq. Yd.	70
Form Liner Textured Surface, Special			Sq. Ft.	356



VIEW B-B



VIEW E-E



BARS $b_2(E)$ & $b_5(E)$

FILE NAME = w:\756-004.lombard - gwt_bridges phase 11\locad sheets\structural\ST CHARLES\0223121-011-APPROACH SLAB DETAILS IL.dgn

Bollinger, Lach & Associates, Inc.
ITASCA, ILLINOIS

USER NAME = gonzo
PLOT SCALE =
PLOT DATE = 7/26/2011

DESIGNED SRT
CHECKED JJI
DRAWN GM
CHECKED JJI

REVISED -
REVISED -
REVISED -
REVISED -

**STATE OF ILLINOIS
GREAT WESTERN TRAIL
ST. CHARLES ROAD**

**BRIDGE APPROACH SLAB DETAILS
STRUCTURE NO. 022-3121**

SHEET NO. 11 OF 29 SHEETS

F.A. RTE.	SECTION	COUNTY	TOTAL SHEETS	SHEET NO.
	06-00151-00-BR	DuPAGE	201	128
CONTRACT NO. 63568			ILLINOIS FED. AID PROJECT	