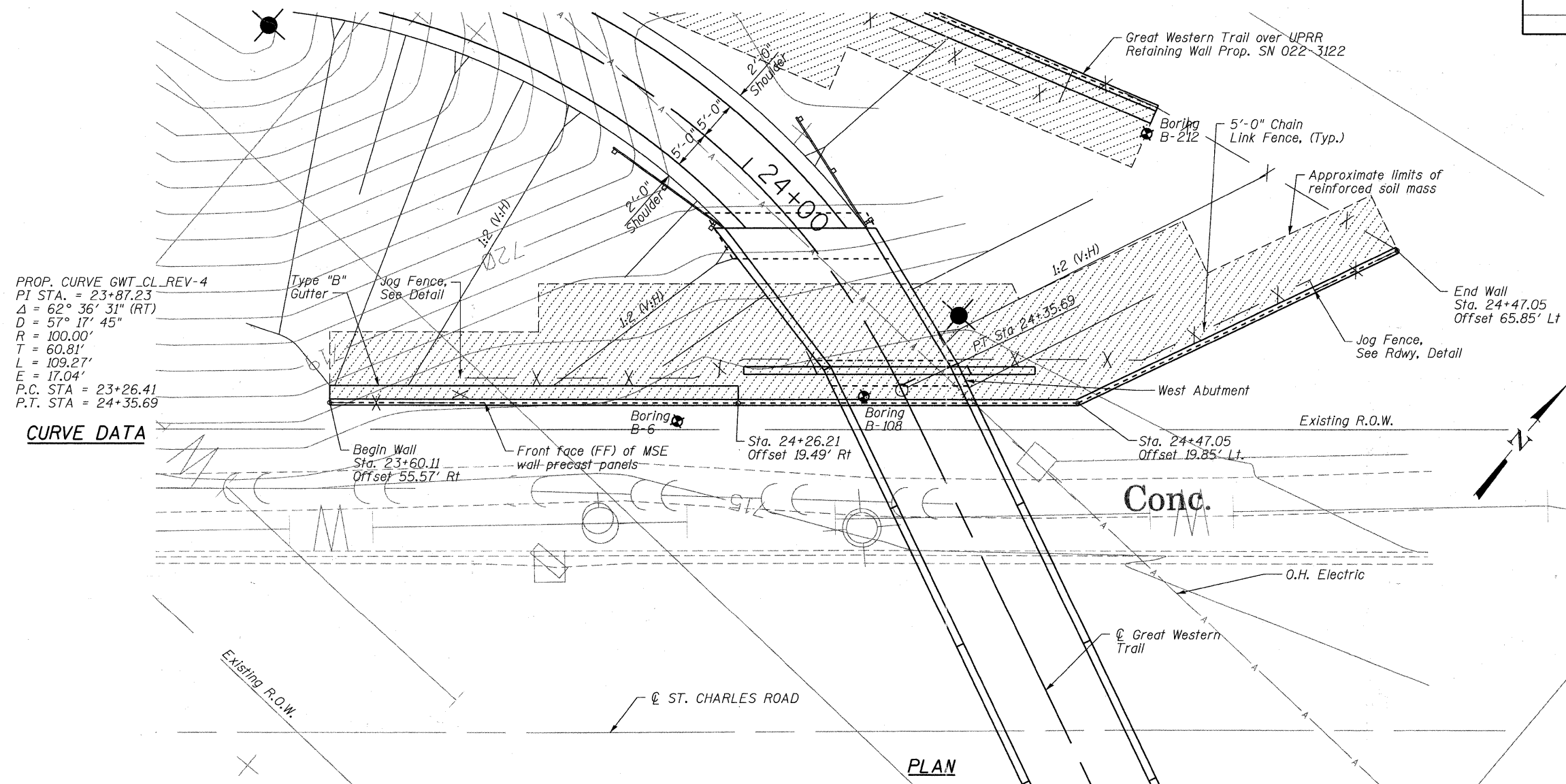


BILL OF MATERIAL

ITEM	UNIT	TOTAL
Structure Excavation	Cu. Yd.	234
Mechanically Stabilized Earth Retaining Wall	Sq. Ft.	1,999
Anti-Graffiti Protection System	Sq. Ft.	1,641
Form Liner Textured Surface, Special	Sq. Ft.	1,641



PROP. CURVE GWT_CL_REV-4
PI STA. = 23+87.23
 $\Delta = 62^\circ 36' 31"$ (RT)
D = 57' 17' 45"
R = 100.00'
T = 60.81'
L = 109.27'
E = 17.04'
P.C. STA = 23+26.41
P.T. STA = 24+35.69

CURVE DATA

Notes:

- See Special Provisions for Mechanically Stabilized Earth Retaining Wall for design and construction requirements.
- Cast-in-place concrete and reinforcing steel, epoxy coated, required for coping will be included in payment for Mechanically Stabilized Earth Retaining Wall, see Special provisions.
- Mechanically Stabilized Earth retaining wall supplier to coordinate location and lengths of soil reinforcement with light pole, conduit, and unit duct locations shown on Lighting Plans to avoid conflicts. Any load transfer system required shall be detailed and shown on Mechanically Stabilized Earth retaining wall Shop Drawings.
- Sonotubes shall be installed by Contractor where light pole locations interfere with soil reinforcement.
- For Fence and Gutter limits and details, see Roadway Plans.
- Contractor shall coordinate MSE retaining wall construction with abutment construction.

Note: Wall offsets are measured from the \odot Great Western Trail to the front face of precast panels.

Approximate Limit of Reinforced Soil Mass

Bollinger, Lach & Associates, Inc.
ITASCA, ILLINOIS

USER NAME =	DESIGNED SRT	REVISED -
PLOT SCALE =	CHECKED JJI	REVISED -
PLOT DATE =	DRAWN GM	REVISED -
	CHECKED JJI	REVISED -

STATE OF ILLINOIS
GREAT WESTERN TRAIL
ST. CHARLES ROAD

WEST ABUTMENT MSE PLAN AND ELEVATION
STRUCTURE NUMBER 022-3121

SHEET NO. 21 OF 29 SHEETS

F.A. RTE.	SECTION	COUNTY	TOTAL SHEETS	SHEET NO.
	06-00151-00-BR	DuPAGE	201	138
				CONTRACT NO. 63568
ILLINOIS FED. AID PROJECT				