

F.A.S. RTE.	SECTION	COUNTY	TOTAL SHEETS	SHEET NO.
0308	01-00042-07-BR	WILL	58	01
WHA# 1033004		CONTRACT NO. 63617		
ILLINOIS FED. AID PROJECT BRS-0308(104)				

PROGRAM AND OFFICE ENGINEER: CHARLES F. RIDDLE, P.E. (847) 705-4406 SCHAUMBURG, IL

**STATE OF ILLINOIS
DEPARTMENT OF TRANSPORTATION
DIVISION OF HIGHWAYS**

**PLANS FOR PROPOSED
FEDERAL AID HIGHWAY**

**F.A.S. ROUTE 0308 (C.H. 24)
INDIANA AVENUE OVER TRIM CREEK
BRIDGE REPLACEMENT
SECTION 01-00042-07-BR
PROJECT NO. BRS-0308(104)
COUNTY OF WILL**

C-91-146-01



LOCATION OF SECTION INDICATED THUS: —■—

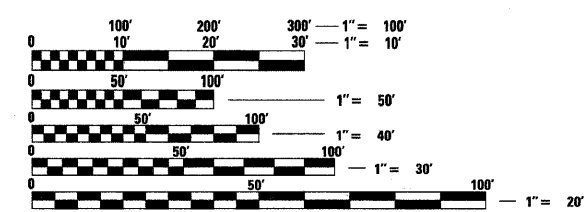
**FOR INDEX OF SHEETS
SEE SHEET NO. 2**

STANDARDS

- 000001-06 STANDARD SYMBOLS, ABBREVIATIONS, AND PATTERNS
- 001001-02 AREAS OF REINFORCEMENT BARS
- 280001-05 TEMPORARY EROSION CONTROL SYSTEMS
- 406201-01 MAILBOX TURNOUT
- 420401-08 BRIDGE APPROACH PAVEMENT CONNECTOR
- 515001-03 NAME PLATE FOR BRIDGES
- 630001-09 STEEL PLATE BEAM GUARDRAIL
- 630301-05 SHOULDER WIDENING FOR TYPE 1 (SPECIAL) GUARDRAIL TERMINALS
- 631031-09 TRAFFIC BARRIER TERMINAL, TYPE 6
- 635006-03 REFLECTOR AND TERMINAL MARKER PLACEMENT
- 635011-02 REFLECTOR MARKER AND MOUNTING DETAILS
- 666001-01 RIGHT OF WAY MARKERS
- 701301-04 LANE CLOSURE, 2L, 2W, SHORT TIME OPERATIONS
- 701306-03 LANE CLOSURE, 2L, 2W, SLOW MOVING OPERATIONS DAY ONLY, FOR SPEEDS ≥ 45 MPH
- 701321-11 LANE CLOSURE, 2L, 2W, BRIDGE REPAIR WITH BARRIER
- 701901-01 TRAFFIC CONTROL DEVICES
- 704001-06 TEMPORARY CONCRETE BARRIER
- 720001-01 SIGN PANEL MOUNTING DETAILS
- 720011-01 METAL POSTS FOR SIGNS, MARKERS & DELINEATORS
- 728001-01 TELESCOPING STEEL SIGN SUPPORT
- 729001-01 APPLICATIONS OF TYPE A & B METAL POSTS (FOR SIGNS & MARKERS)
- TC-11 DISTRICT 1 DETAIL
TYPICAL APPLICATIONS RAISED REFLECTIVE PAVEMENT MARKERS SNOW-PLOW RESISTANT
- TC-13 DISTRICT 1 DETAIL
TYPICAL PAVEMENT MARKINGS

DESIGN DESIGNATION

DESIGN SPEED: 55 MPH POSTED SPEED: 55 MPH			
FUNCTIONAL CLASSIFICATION	ROUTE	ADT (2032)	% TRUCKS
RURAL MAJOR COLLECTOR	INDIANA AVE. (C.H. 24)	6,537	6.2

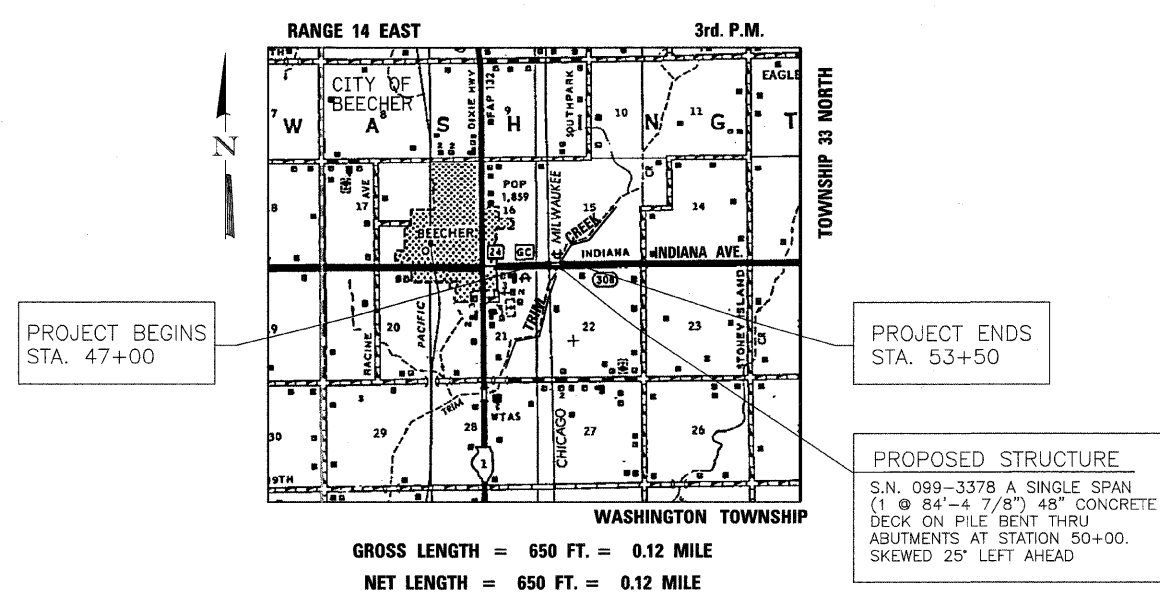


FULL SIZE PLANS HAVE BEEN PREPARED USING STANDARD ENGINEERING SCALES. REDUCED SIZED PLANS WILL NOT CONFORM TO STANDARD SCALES. IN MAKING MEASUREMENTS ON REDUCED PLANS, THE ABOVE SCALES MAY BE USED.

J.U.L.I.E.
JOINT UTILITY LOCATION INFORMATION FOR EXCAVATION
1-800-892-0123
OR 811

CONTRACT NO. 63617

LOCATION MAP



STATE OF ILLINOIS DEPARTMENT OF TRANSPORTATION
DIVISION OF HIGHWAYS

APPROVED: June 22nd 2011
[Signature]
ENGINEER

PASSED: July 18 2011
[Signature]
DISTRICT ENGINEER OF LOCAL ROADS & STREETS

RELEASING FOR BID
BASED ON LIMITED
REVIEW: July 18 2011
[Signature]
DEPUTY DIRECTOR OF HIGHWAYS, REGION I ENGINEER

**PRINTED BY THE AUTHORITY
OF THE STATE OF ILLINOIS**

Brian K. Converse
DATE: 6/16/2011
EXPIRES 11/30/11

**WILLET HOFMANN
& ASSOCIATES INC**
ENGINEERING ARCHITECTURE LAND SURVEYING
809 EAST 2ND STREET, DIXON, IL 61021-0367
T: 815-284-3381 DESIGN FIRM: #184-000918

S:\Sfr\ref\1033004-Indiana Avenue.Design\103304Cover.dgn