

**LEFT EDGE OF APPROACH PAVEMENT**

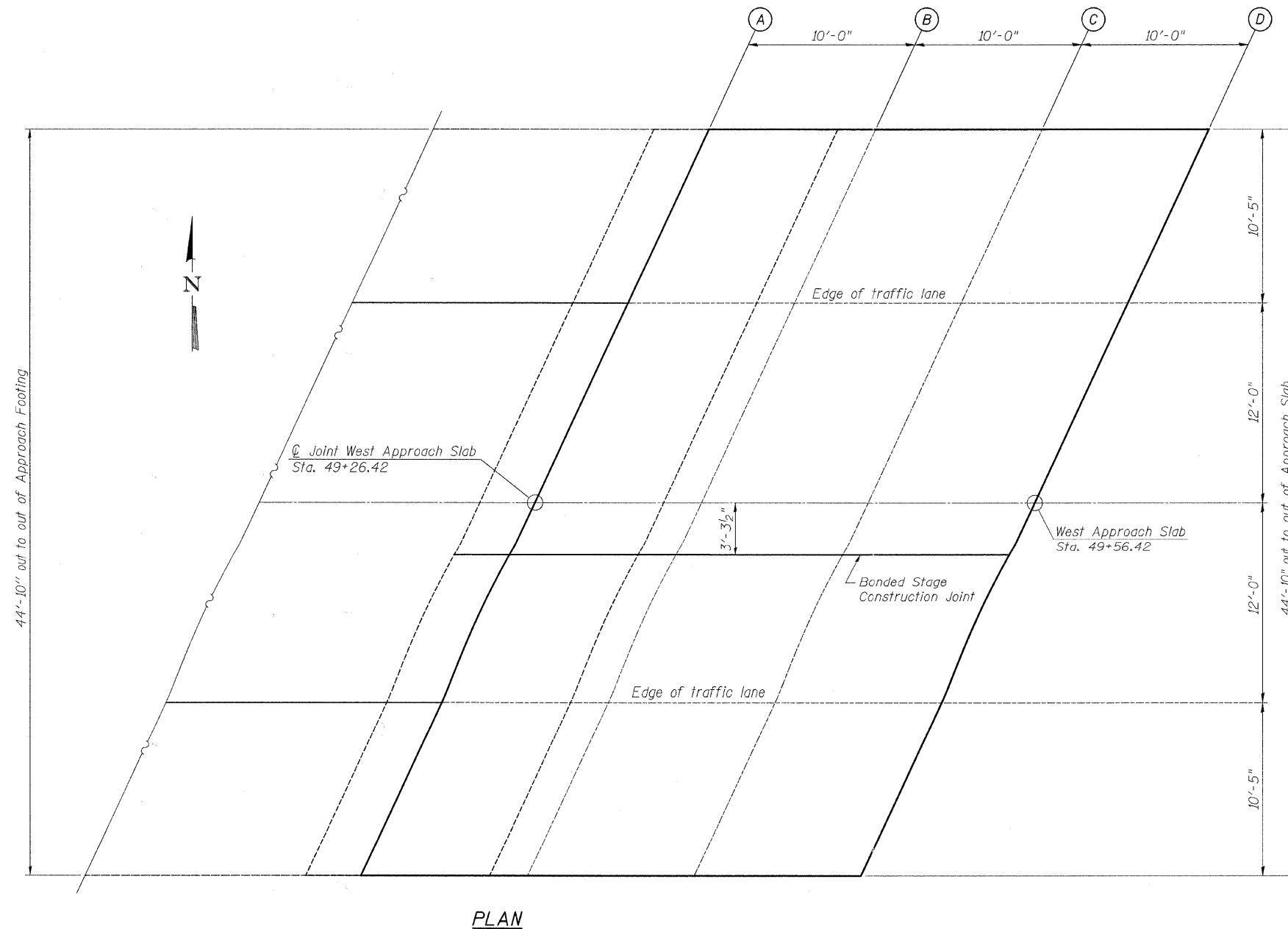
Location	Station	Offset Lt.	Theoretical Grade Elevations
A	49+36.87	22.42	703.03
B	49+46.87	22.42	702.86
C	49+56.87	22.42	702.69
D	49+66.87	22.42	702.53

**LEFT EDGE OF TRAFFIC LANE**

Location	Station	Offset Lt.	Theoretical Grade Elevations
A	49+32.01	12.00	703.33
B	49+42.01	12.00	703.16
C	49+52.01	12.00	702.99
D	49+62.01	12.00	702.82

**CENTERLINE**

Location	Station	Offset	Theoretical Grade Elevations
A	49+26.42	0.00	703.62
B	49+36.42	0.00	703.44
C	49+46.42	0.00	703.27
D	49+56.42	0.00	703.10



**PLAN**

**BONDED CONSTRUCTION JOINT**

Location	Station	Offset Rt.	Theoretical Grade Elevations
A	49+24.88	3.29	703.59
B	49+34.88	3.29	703.42
C	49+44.88	3.29	703.25
D	49+54.88	3.29	703.08

**RIGHT EDGE OF TRAFFIC LANE**

Location	Station	Offset Rt.	Theoretical Grade Elevations
A	49+20.82	12.00	703.53
B	49+30.82	12.00	703.35
C	49+40.82	12.00	703.18
D	49+50.82	12.00	703.01

**RIGHT EDGE OF APPROACH PAVEMENT**

Location	Station	Offset Rt.	Theoretical Grade Elevations
A	49+15.96	22.42	703.40
B	49+25.96	22.42	703.22
C	49+35.96	22.42	703.05
D	49+45.96	22.42	702.87

FILE = S:\Struct\103300\Indiana Avenue\Design\Structural\Drawings\103300\Top\WestApproachSlabElevations.dgn

REVISION	DATE	BY	REMARKS

DRAWN  
R.D.A.  
CHECKED  
M.C.W.  
APPROVED  
B.K.C.

**ILLINOIS DEPARTMENT OF TRANSPORTATION  
BRIDGE REPLACEMENT  
INDIANA AVENUE (CH 24) OVER TRIM CREEK**



**WILLET HOFMANN  
& ASSOCIATES, INC.**  
ENGINEERING ARCHITECTURE LAND SURVEYING  
809 EAST 2ND STREET, OGDON, IL 61021-0367  
T: 815-284-3381 DESIGN FIRM: #184-000918

**WILL COUNTY**

**TOP OF WEST APPROACH SLAB ELEVATIONS  
STRUCTURE NO. 099-3378**

**STRUCTURAL SHEET NO. 6 OF 19 SHEETS**

SECTION	COUNTY	TOTAL SHEETS	SHEET NO.
01-00042-07-BR	WILL	58	19
STA. 47+00	STA. 53+50		
WHA #: 1033004	DATE: 6/9/2011		

CONTRACT NO. 63617