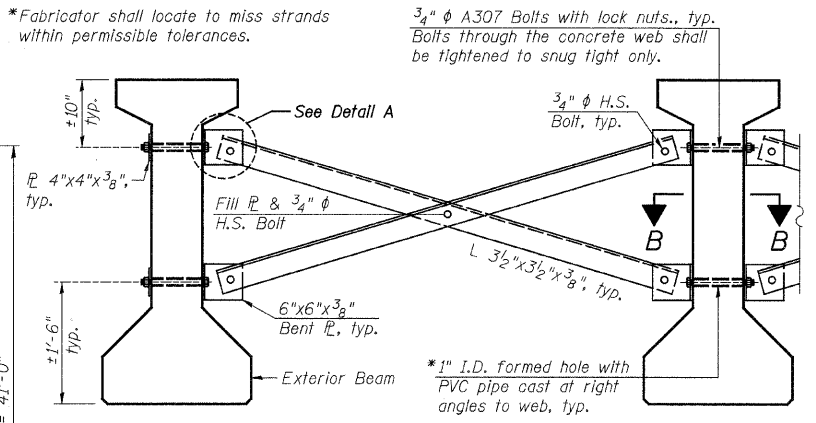


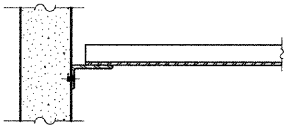
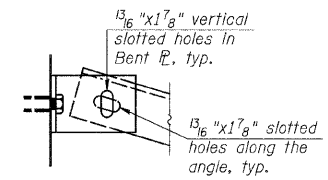
BEAM MOMENT TABLE		
	Interior	0.5 Span
I	(in ⁴)	144,118
I'	(in ⁴)	404,013
S_b	(in ³)	6,834
S_b'	(in ³)	11,463
S_t	(in ³)	5,355
S_t'	(in ³)	31,677
$DC1$	(k/')	1.283
M_{DC1}	(k')	1,143
$DC2$	(k/')	0.129
M_{DC2}	(k')	115
DW	(k/')	0.342
M_{DW}	(k')	305
$M_k + M$	(k')	1,377.3

BEAM REACTION TABLE		
	Interior	at Abutment
R_{DC1}	(k)	54.1
R_{DC2}	(k)	5.4
R_{DW}	(k)	14.4
$R_k + M$	(k)	82
R_{Total}	(k)	155.9

FRAMING PLAN

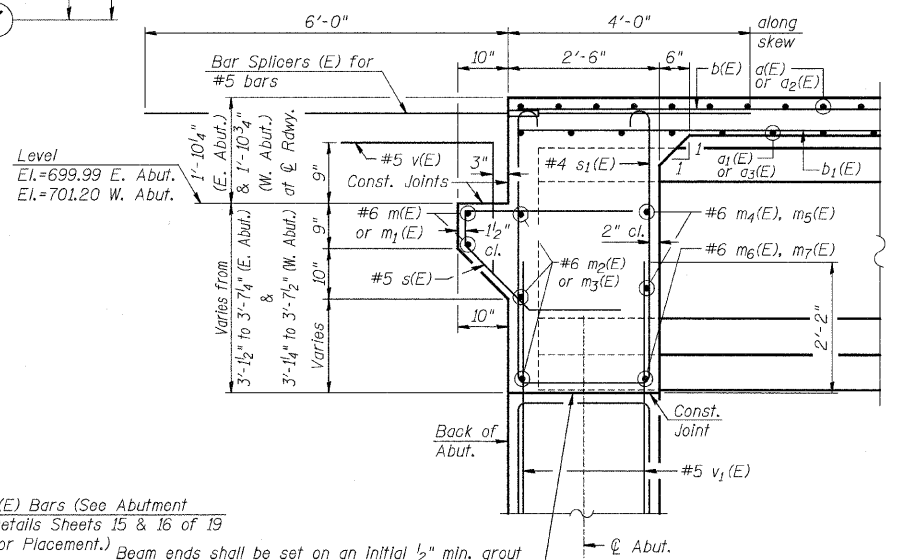


PERMANENT BRACING DETAILS



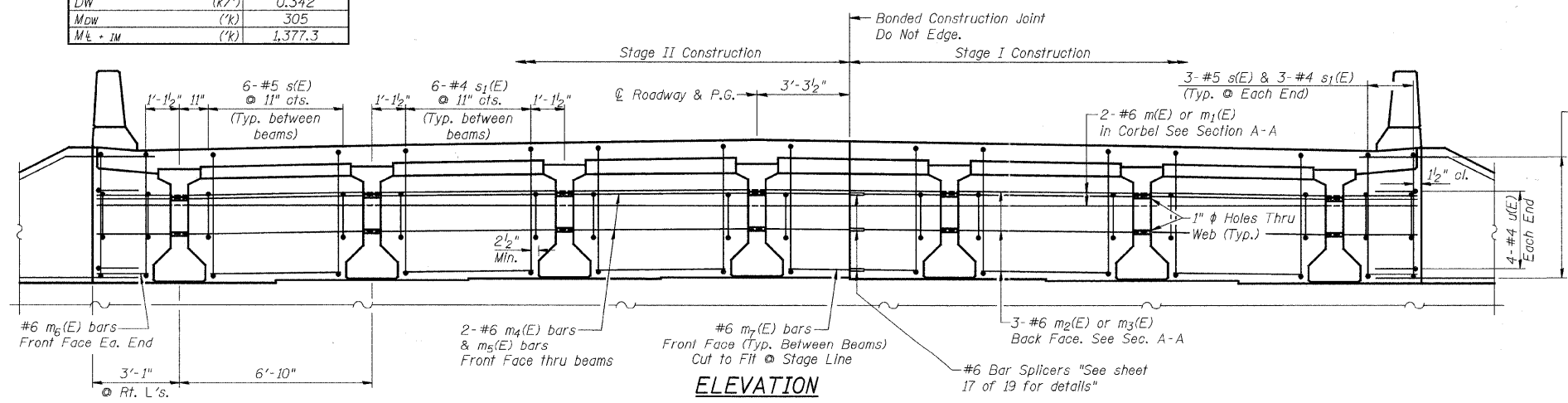
DETAIL A

SECTION B-B



SECTION A-A

NOTE:
 s(E) & s₁(E) bars are to be placed parallel to the beams. All material for bracing shall be hot dip galvanized according to AASHTO M111 unless otherwise noted. Two hardened washers are required for each set of oversized holes. All holes shall be $\frac{5}{16}$ " ϕ unless otherwise noted. $\frac{3}{16}$ " x 3" x 3" plate washers are required over all slotted holes. All bolts shall be galvanized according to AASHTO M232. Bracing shall be installed as beams are erected and tightened as soon as possible during erection. Permanent bracing shall not be paid for separately, but shall be included in the cost of Furnishing and Erecting Precast Prestressed Concrete I-Beams. Bracing between beam lines 4 & 5 shall be completed after deck has been poured.



ELEVATION DIAPHRAGM AT ABUTMENT

(East Abutment Looking East)
 (West Abutment Similar)

FILE = S:\Struct\1033004-Indiana Avenue\Design\Structural Drawings\1033004-Framing.dgn

REVISION	DATE	BY	REMARKS

DRAWN R.D.A.
 CHECKED M.C.W.
 APPROVED B.K.C.

ILLINOIS DEPARTMENT OF TRANSPORTATION
 BRIDGE REPLACEMENT
 INDIANA AVENUE (CH 24) OVER TRIM CREEK

WILLET HOFMANN & ASSOCIATES INC.
 ENGINEERING ARCHITECTURE LAND SURVEYING
 809 EAST 2ND STREET, DIXON, IL 61021-0267
 T: 815-284-3381 DESIGN FIRM: 8154-00918

WILL COUNTY

FRAMING PLAN AND DIAPHRAGM DETAILS
 STRUCTURE NO. 099-3378
 STRUCTURAL SHEET NO. 10 OF 19 SHEETS

SECTION	COUNTY	TOTAL SHEETS	SHEET NO.
01-00042-07-BR	WILL	58	23
STA. 47+00	STA. 53+50		
WHA #: 1033004	DATE: 6/9/2011		

CONTRACT NO. 63617