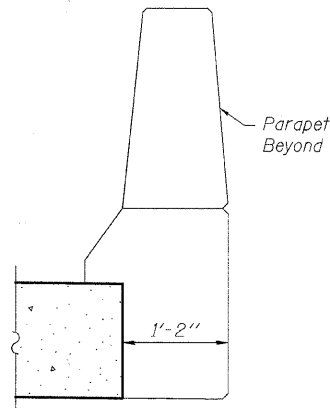
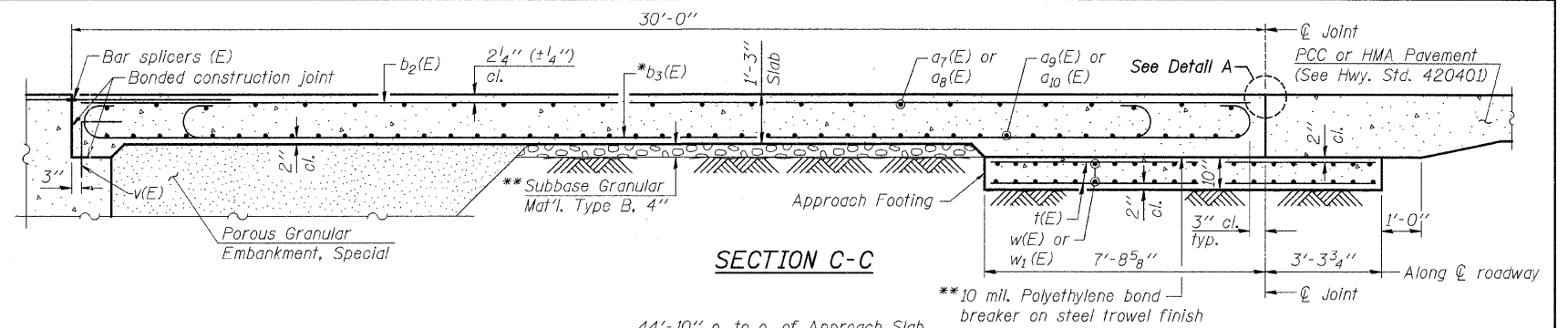


FLEXIBLE PAVEMENT

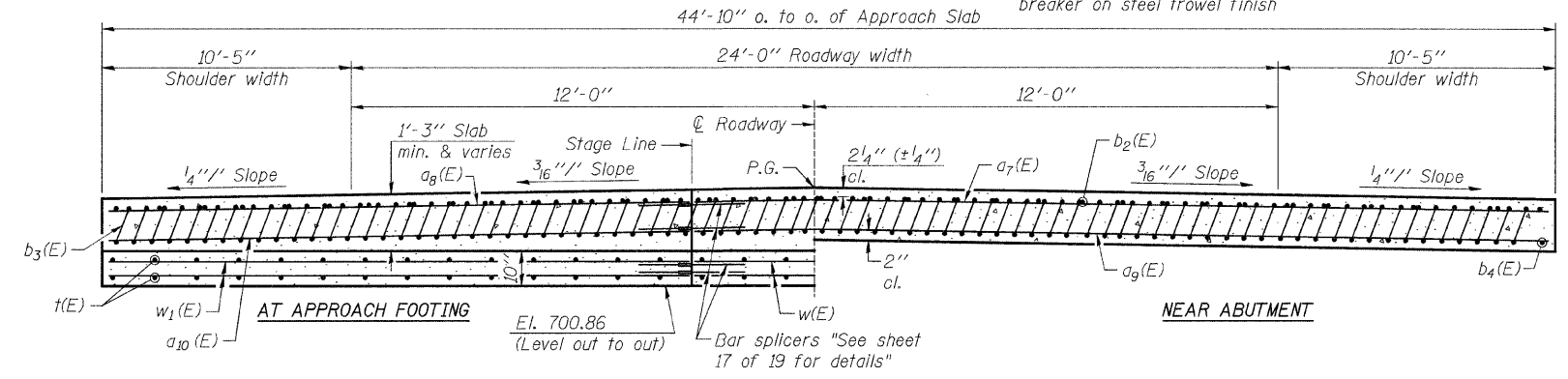
DETAIL A



VIEW B-B

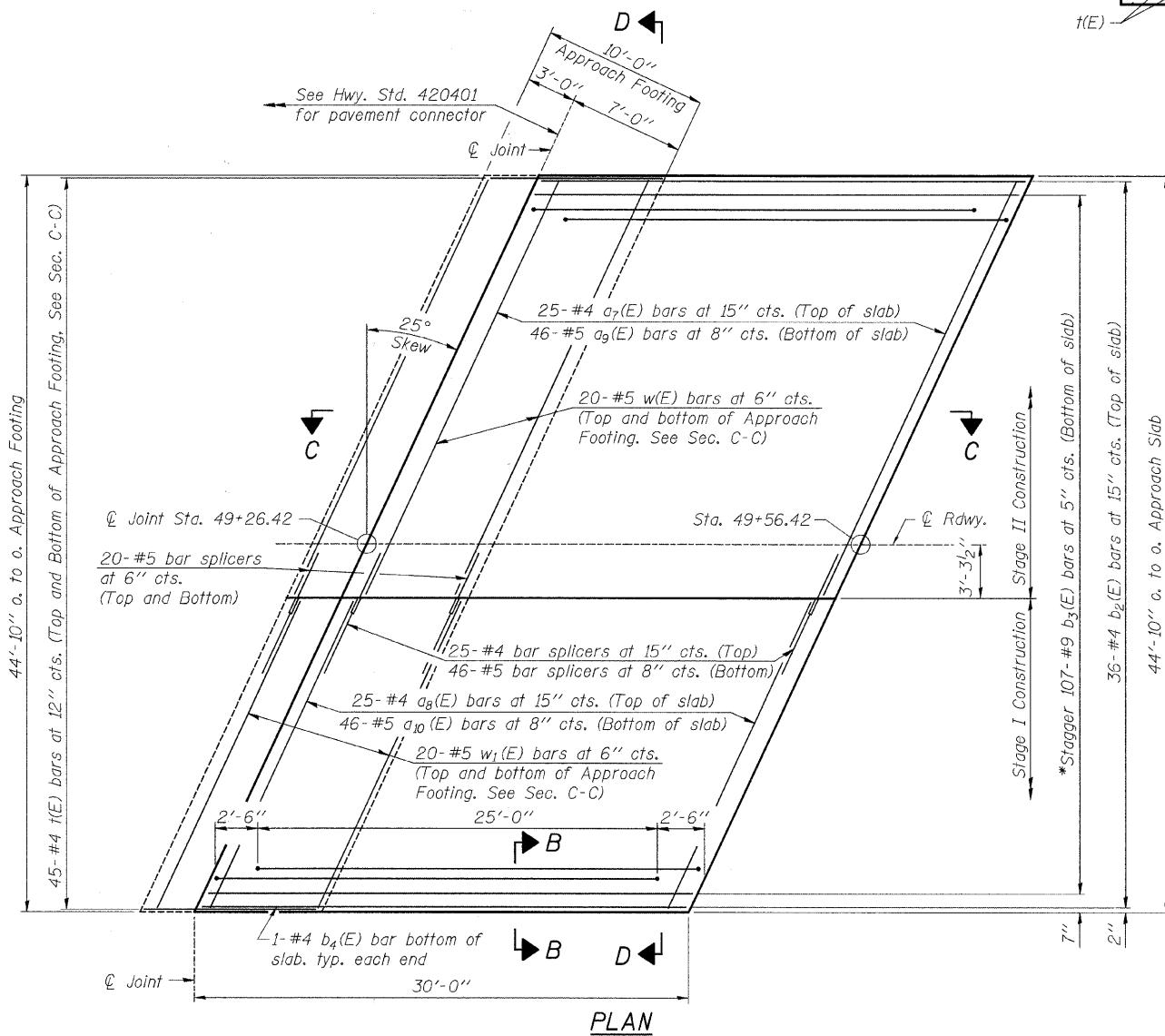


SECTION C-C

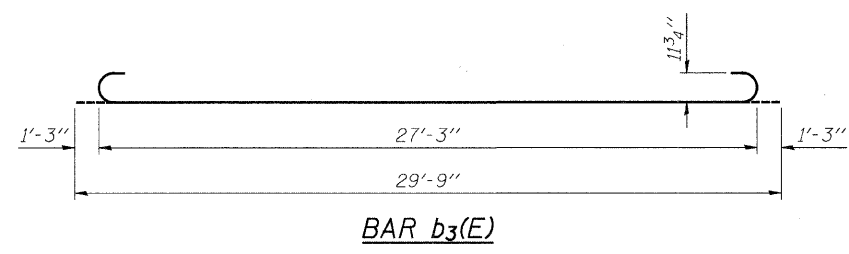


SECTION D-D

(See Plan for dimensions not shown.)



PLAN



BAR b3(E)

**BILL OF MATERIAL**

Bar	No.	Size	Length	Shape
a7(E)	25	#4	28'-0"	—
a8(E)	25	#4	20'-8"	—
a9(E)	46	#5	28'-0"	—
a10(E)	46	#5	20'-8"	—
b2(E)	36	#4	29'-8"	—
b3(E)	107	#9	29'-9"	—
b4(E)	2	#4	29'-8"	—
t(E)	90	#4	10'-9"	—
w(E)	40	#5	28'-0"	—
w1(E)	40	#5	20'-8"	—
Concrete Structures			Cu. Yd.	15.3
Concrete Superstructure			Cu. Yd.	69.2
Bridge Deck Grooving			Sq. Yd.	143
Protective Coat			Sq. Yd.	150
Reinforcement Bars, Epoxy Coated			Pound	17,400
Bar Splicers			Each	111

**NOTES:**

- a7(E) through a10(E) bar spacings measured along  $\text{C.R.}$  (Centerline of Roadway).
- Approach slab shall be paid for as Concrete Superstructure.
- Approach footing concrete shall be paid for as Concrete Structures.
- Reinforcement shall be paid for as Reinforcement Bars, Epoxy Coated.
- For v(E) bar details, see Structural Sheet 9 of 19.
- The approach footing maximum applied service bearing pressure (Qmax) = 2.0 ksf.
- For Bar Splicer Assembly Details, see Structural Sheet 17 of 19.
- Cost of excavation for approach footing included with Concrete Structures.
- For Porous Granular Embankment, Special and drainage treatment details, see Structural Sheet 4 of 19.
- For additional parapet details, see Structural Sheet 9 of 19.
- \* Tilt #9 b4(E) bars as required to maintain clearance.
- \*\* Cost included with Concrete Superstructure.

FILE = S:\S:\Struct\1023004-Indiana Avenue\Design\Structural Drawings\1023004WestApproachSlabDetails.dgn

REVISION	DATE	BY	REMARKS

**ILLINOIS DEPARTMENT OF TRANSPORTATION**  
**BRIDGE REPLACEMENT**  
**INDIANA AVENUE (CH 24) OVER TRIM CREEK**

**WILLET HOFMANN ASSOCIATES INC.**  
 ENGINEERING ARCHITECTURE LAND SURVEYING  
 809 EAST 2ND STREET, DIXON, IL 61021-0567  
 T: 815-284-3351 DESIGN FIRM: #154-000918

**WILL COUNTY**

**WEST BRIDGE APPROACH SLAB DETAILS**  
**STRUCTURE NO. 099-3378**  
**STRUCTURAL SHEET NO. 11 OF 19 SHEETS**

SECTION	COUNTY	TOTAL SHEETS	SHEET NO.
01-00042-07-BR	WILL	58	24
STA. 47+00	STA. 53+50		
WHA #: 1033004	DATE: 6/9/2011		

CONTRACT NO. 63617