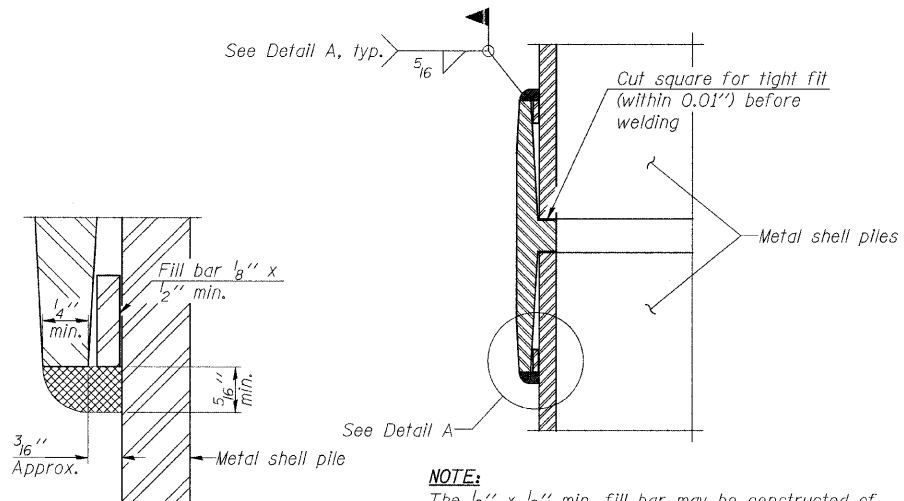


METAL SHELL PILE TABLE

Designation and outside diameter	Wall thickness t	Weight per foot (Lbs./ft.)	Inside volume (yd ³ /ft.)
PP12	0.179"	22.60	0.0274
PP12	0.250"	31.37	0.0267
PP14	0.250"	36.71	0.0368
PP14	0.312"	45.61	0.0361



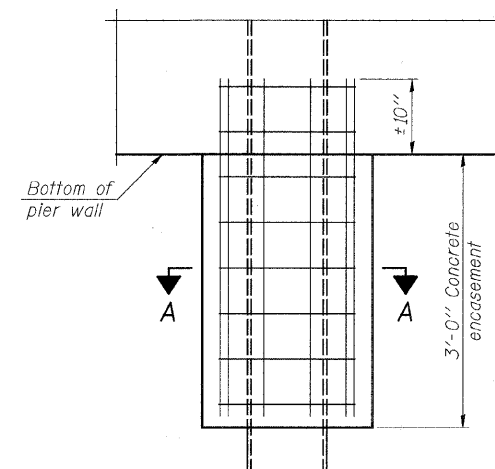
DETAIL A

NOTE:

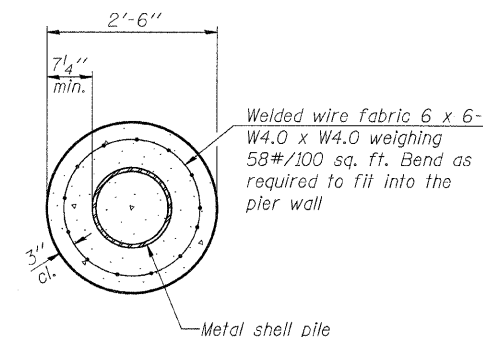
The 1/8" x 1/2" min. fill bar may be constructed of 2 bars with a 1/8" max. gap between them.

Pile segments shall be driven to solid contact with splicer before welding.

WELDED COMMERCIAL SPLICE



ELEVATION

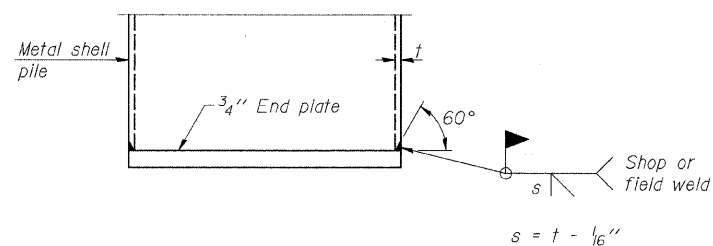


SECTION A-A

NOTE:

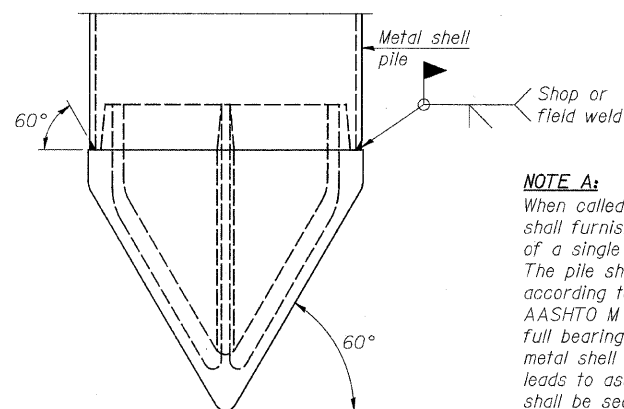
Forms for encasement may be omitted when soil conditions permit.

CONCRETE ENCASEMENT AT PIERS



END PLATE ATTACHMENT

$s = t - 1/16"$

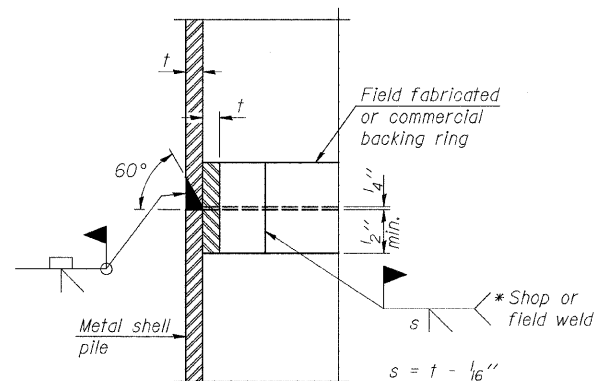


METAL SHELL PILE SHOE ATTACHMENT

(See Note A)

NOTE A:

When called for on the plans, the Contractor shall furnish metal shell pile shoes consisting of a single piece conical pile point as shown. The pile shoes shall be cast in one piece steel according to either ASTM A 148 Grade 90-60 or AASHTO M 103 Grade 65-35 and shall provide full bearing over the full circumference of the metal shell pile. The pile shoe shall have tapered leads to assure proper alignment and fitting and shall be secured to the pile with a circumferential weld.

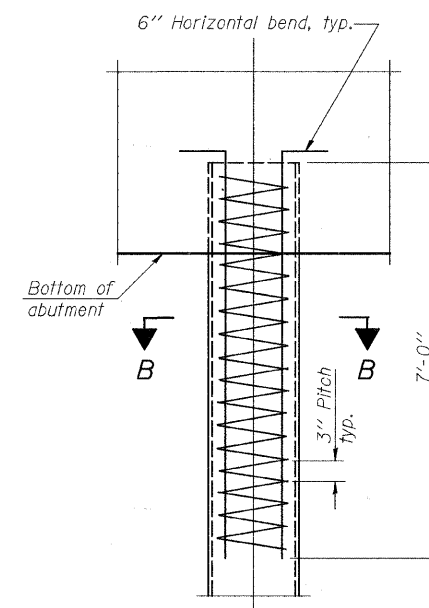


COMPLETE PENETRATION WELD SPLICE

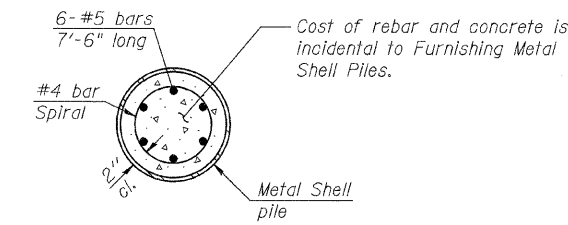
* Field fabricated backing ring may be made from pile shell by removing segment to allow reducing circumference and vertically rejoin with partial joint penetration weld.

NOTE:

The metal shell piles shall be according to ASTM A 252 Grade 3.



ELEVATION



SECTION B-B

Cost of rebar and concrete is incidental to Furnishing Metal Shell Piles.

METAL SHELL REINFORCEMENT AT ABUTMENTS

FILE = S:\Struct\1033004-Indiana Avenue\Design\Structural Drawings\1033004\PP11.dgn

REVISION	DATE	BY	REMARKS

DRAWN	R.D.A.
CHECKED	M.C.W.
APPROVED	B.K.C.

**ILLINOIS DEPARTMENT OF TRANSPORTATION
BRIDGE REPLACEMENT
INDIANA AVENUE (CH 24) OVER TRIM CREEK**

**WILLET HOFMANN
ASSOCIATES INC**
ENGINEERING ARCHITECTURE LAND SURVEYING
809 EAST 2ND STREET, DIXON, IL 61021-0987
T: 315-294-3391 DESIGN FIRM: #194-00018

WILL COUNTY

**METAL SHELL PILE DETAILS
STRUCTURE NO. 099-3378**

STRUCTURAL SHEET NO. 18 OF 19 SHEETS

SECTION	COUNTY	TOTAL SHEETS	SHEET NO.
01-00042-07-BR	WILL	58	31
STA. 47+00	STA. 53+50		
WHA #: 1033004	DATE: 6/9/2011		

CONTRACT NO. 63617