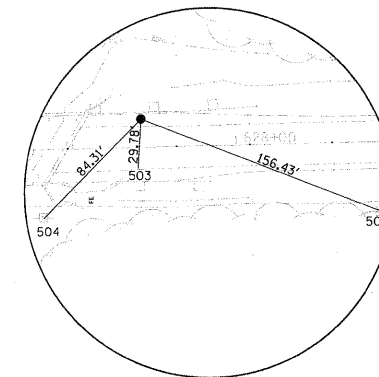


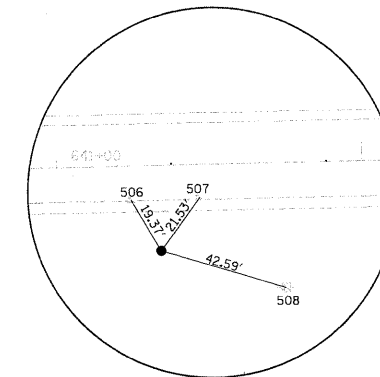
HORIZONTAL CONTROL POINTS							
POINT	NORTH	EAST	ELEVATION	CHAIN	STATION	OFFSET	DESCRIPTION
1	1780077.9200	2334852.8410	608.8090	IL92	OUT OF CHAIN	-----	GPS CONTROL POINT
2	1785594.1760	2374793.7830	623.0000	IL92	OUT OF CHAIN	-----	GPS CONTROL POINT

SURVEY WORK POINTS							
POINT	NORTH	EAST	ELEVATION	CHAIN	STATION	OFFSET	DESCRIPTION
101	1780097.7430	2353325.1820	607.5110	IL92	620+01.70	20.6611' RT	PROFILE
103	1780171.5930	2354577.5950	606.7330	IL92	632+55.49	24.0048' LT	PROFILE
104	1780171.5930	2354577.5950	607.1860	IL92	632+55.49	24.0048' LT	PROFILE
150	1780171.5890	2354577.5130	606.8730	IL92	632+55.41	24.0027' LT	SURVEY WORK POINT
151	1780097.7400	2353325.1820	607.5110	IL92	620+01.70	20.6641' RT	SURVEY WORK POINT
152	1780171.5640	2354577.5330	606.7680	IL92	632+55.43	23.9773' LT	SURVEY WORK POINT
153	1780097.6790	2353325.1440	607.6150	IL92	620+01.66	20.7242' RT	SURVEY WORK POINT
154	1780140.1140	2355456.7790	607.6020	IL92	641+33.70	27.9386' RT	SURVEY WORK POINT
155	1780222.0530	2356710.6110	609.3840	IL92	653+89.10	24.7811' LT	SURVEY WORK POINT
156	1780235.3490	2357633.6370	612.0000	IL92	663+12.19	16.5797' LT	SURVEY WORK POINT
157	1780041.2070	2353877.9340	607.1630	IL92	625+52.98	90.0533' RT	SURVEY WORK POINT
158	1780115.8100	2353902.3440	601.2431	IL92	625+79.12	16.039' RT	SURVEY WORK POINT
159	1780150.6430	2353964.5810	611.3680	IL92	626+42.16	17.3353' LT	SURVEY WORK POINT
160	1780224.4400	2353893.2110	609.4490	IL92	625+72.52	92.7742' LT	SURVEY WORK POINT
161	1780221.3670	2353443.2560	607.2439	IL92	621+22.62	100.1799' LT	SURVEY WORK POINT
162	1780141.2370	2353612.9230	609.1050	IL92	622+90.37	16.1207' LT	SURVEY WORK POINT
170	1780106.4680	2356331.7800	609.3250	IL92	650+07.68	81.951' RT	SURVEY WORK POINT
171	1780055.7630	2356292.7280	608.9120	IL92	649+67.46	131.7329' RT	SURVEY WORK POINT
172	1779946.9040	2356270.8300	609.7780	IL92	649+43.04	240.0524' RT	SURVEY WORK POINT
173	1779890.5140	2356229.3700	610.0990	IL92	649+00.27	295.4617' RT	SURVEY WORK POINT
174	1779819.7220	2356190.7990	610.0150	IL92	648+60.06	365.3363' RT	SURVEY WORK POINT
175	1779756.9370	2356167.2620	609.9710	IL92	648+35.07	427.5562' RT	SURVEY WORK POINT
176	1779706.3040	2356156.4140	609.7160	IL92	648+23.05	477.9228' RT	SURVEY WORK POINT
177	1779604.2450	2356117.6420	610.4050	IL92	647+81.91	579.0513' RT	SURVEY WORK POINT
178	1779507.3840	2356096.6750	610.5200	IL92	647+58.69	675.3978' RT	SURVEY WORK POINT
179	1780174.6520	2356412.7360	609.5104	IL92	650+90.21	15.6706' RT	SURVEY WORK POINT
181	1779461.0300	2356092.5540	610.2290	IL92	647+53.49	721.6433' RT	SURVEY WORK POINT
182	1779404.3620	2356084.6350	609.8460	IL92	647+44.26	778.1115' RT	SURVEY WORK POINT
183	1779354.4890	2356077.5510	609.7050	IL92	647+36.01	827.806' RT	SURVEY WORK POINT
184	1779296.8620	2356071.6120	609.3790	IL92	647+28.73	885.2791' RT	SURVEY WORK POINT

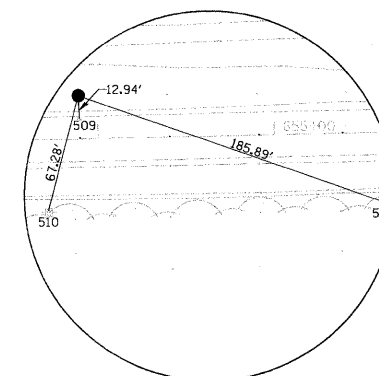
REFERENCE TIES				
POINT	CHAIN	STATION	OFFSET	DESCRIPTION
500	IL92	620+03.04	11.2017' RT	PK NAIL W/ SHINER--EDGE OF PAVEMENT
501	IL92	620+01.32	37.7719' RT	PK NAIL W/ SHINER--POWERPOLE
502	IL92	618+10.67	37.8104' RT	PK NAIL W/ SHINER--POWERPOLE
503	IL92	626+39.87	12.3579' RT	PK NAIL W/ SHINER--EDGE OF PAVEMENT
504	IL92	625+81.73	41.4649' RT	PK NAIL W/ SHINER--POWERPOLE
505	IL92	627+87.03	41.665' RT	PK NAIL W/ SHINER--POWERPOLE
506	IL92	641+24.28	11.0085' RT	PK NAIL W/ SHINER--EDGE OF PAVEMENT
507	IL92	641+46.67	10.7549' RT	PK NAIL W/ SHINER--EDGE OF PAVEMENT
508	IL92	641+74.27	40.9237' RT	PK NAIL W/ SHINER--POWERPOLE
509	IL92	653+89.54	11.8456' LT	PK NAIL W/ SHINER--EDGE OF PAVEMENT
510	IL92	653+70.89	39.9882' RT	PK NAIL W/ SHINER--POWERPOLE
511	IL92	655+63.22	40.333' RT	PK NAIL W/ SHINER--POWERPOLE
512	IL92	663+48.70	41.3523' RT	PK NAIL W/ SHINER--POWERPOLE
513	IL92	663+07.07	11.4075' LT	PK NAIL W/ SHINER--EDGE OF PAVEMENT
514	IL92	665+49.96	41.814' RT	PK NAIL W/ SHINER--POWERPOLE
667	IL92	651+58.57	0.3127' LT	PAVEMENT - CENTERLINE



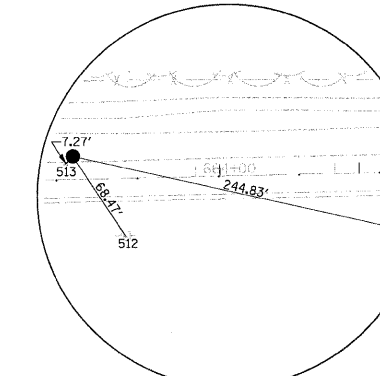
HORIZONTAL CONTROL POINT NO. 159



HORIZONTAL CONTROL POINT NO. 154



HORIZONTAL CONTROL POINT NO. 155



HORIZONTAL CONTROL POINT NO. 156



Chain IL92 contains:
4 3 5

Beginning chain IL92 description

Point 4 N 1,780,060.1432 E 2,350,823.6806 Sta 595+00.00

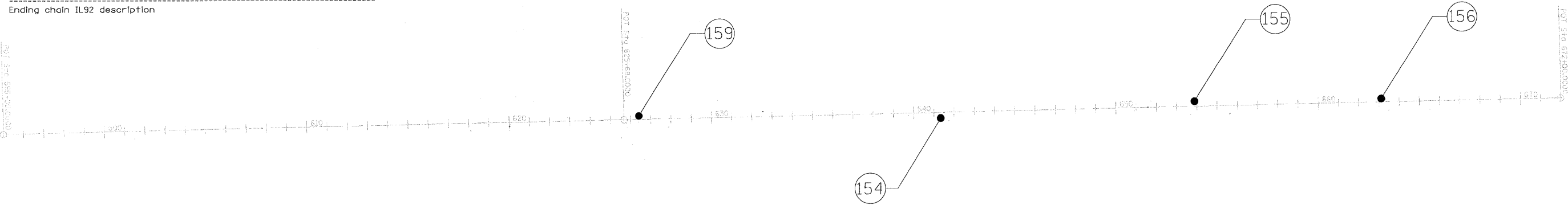
Course from 4 to 3 88° 39' 56.42" Dist 3,068.0000'

Point 3 N 1,780,131.5856 E 2,353,890.8487 Sta 625+68.00

Course from 3 to 5 88° 39' 56.42" Dist 4,632.0000'

Point 5 N 1,780,239.4476 E 2,358,521.5927 Sta 672+00.00

Ending chain IL92 description



FILE NAME = s:\p\63000-63999\63416\027\mcrora\hst\hst-hva.dgn



1170 SOUTH HOUBOLT ROAD JOLIET, ILLINOIS 60431 (815) 744-4200	USER NAME = brianf	DESIGNED -	REVISED -
PLOT SCALE = 28.0000' / IN.	CHECKED -	REVISED -	REVISED -
PLOT DATE = 7/19/2011	DATE -	REVISED -	REVISED -

STATE OF ILLINOIS
DEPARTMENT OF TRANSPORTATION

HORIZONTAL AND VERTICAL CONTROL

SCALE: AS SHOWN SHEET NO. OF SHEETS STA. TO STA.

F.A.P. RTE. 585	SECTION 128 BR	COUNTY HENRY	TOTAL SHEETS 106	SHEET NO. 17
CONTRACT NO. 64C20				
FED. ROAD DIST. NO. 2 ILLINOIS FED. AID PROJECT				