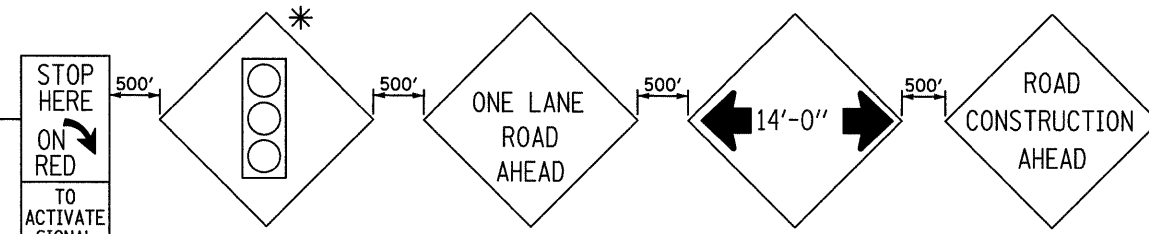
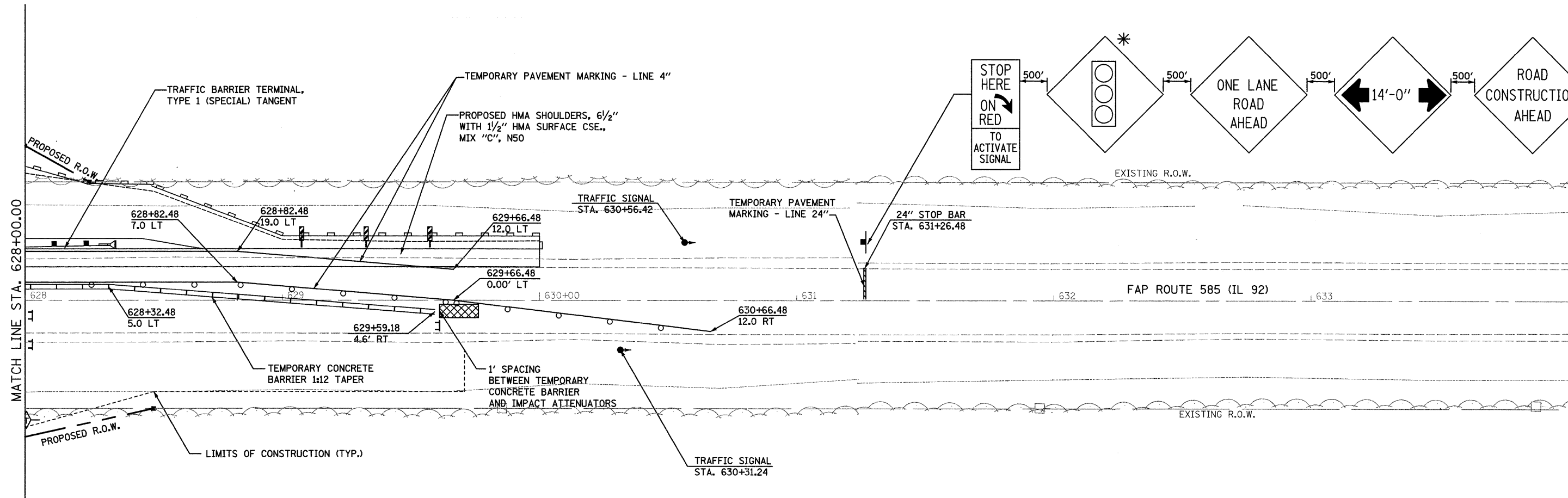


STAGE 2

* SIGN SHALL BE INSTALLED ON BOTH THE NORTH AND SOUTH SIDE OF IL 92 PER STANDARD 701321

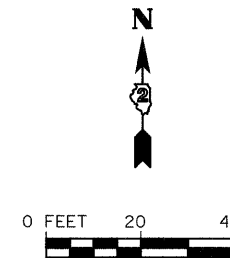


STAGE 2 NOTES:

1. RELOCATE TRAFFIC CONTROL AND TEMPORARY TRAFFIC SIGNALS ACCORDING TO STAGE 2 MAINTENANCE OF TRAFFIC DETAILS AND STANDARD 701321.
2. REMOVE THE SOUTH SIDE EXISTING BRIDGE, APPROACH, ABUTMENT, AND PIERS.
3. CONSTRUCT THE SOUTH SIDE OF BRIDGE INCLUDING PROPOSED RIP-RAP AND EARTHWORK.
4. REMOVE EXISTING HMA SURFACE ON THE EASTBOUND LANE.
5. INSTALL PROPOSED HMA SHOULDERS AND HMA LEVELING BINDER ON THE EASTBOUND LANE.
6. INSTALL THE PROPOSED GUARDRAIL ON THE NORTH SIDE.
7. COMPLETE CLOSURE POUR ON BRIDGE.

STAGE 3 NOTES:

1. REMOVE TRAFFIC CONTROL AND TEMPORARY TRAFFIC SIGNALS FROM STAGE III MAINTENANCE OF TRAFFIC DETAILS AND STANDARD 701321.
2. INSTALL PROPOSED HMA SURFACE COURSE.
3. INSTALL PERMANENT PAVEMENT MARKINGS.



FILE NAME = S:\JOL\6300-6399\6346\027\MicroStation\sho\stg2\stage2-3.dgn



USER NAME = raymondk	DESIGNED -	REVISED -
PLOT SCALE = 20.0000 ' / IN.	DRAWN -	REVISED -
PLOT DATE = 7/21/2011	CHECKED -	REVISED -
	DATE -	REVISED -

STATE OF ILLINOIS
DEPARTMENT OF TRANSPORTATION

SUGGESTED MAINTENANCE OF TRAFFIC

SCALE: AS SHOWN SHEET NO. OF SHEETS STA. 628+00 TO STA. 634+00

F.A.P. RTE.	SECTION	COUNTY	TOTAL SHEETS	SHEET NO.
585	128 BR	HENRY	106	35
CONTRACT NO. 64C20				
FED. ROAD DIST. NO. 2 ILLINOIS FED. AID PROJECT				