


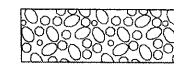
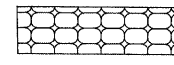
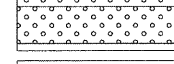

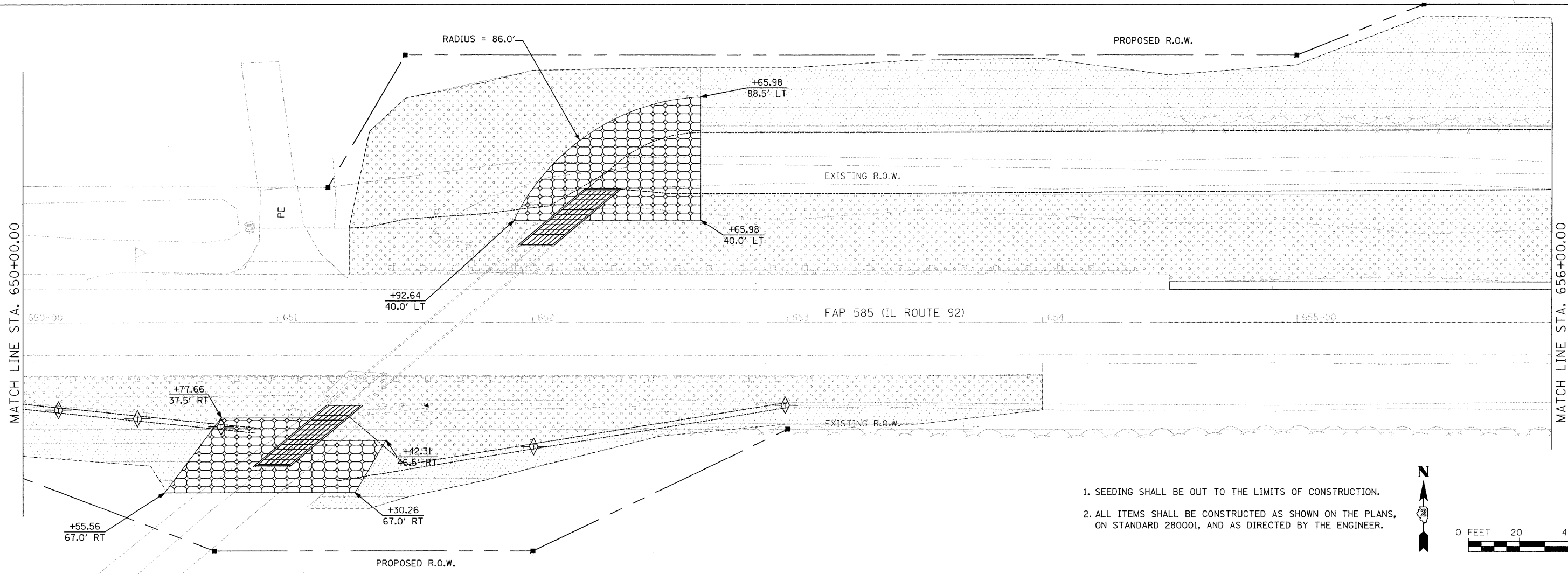
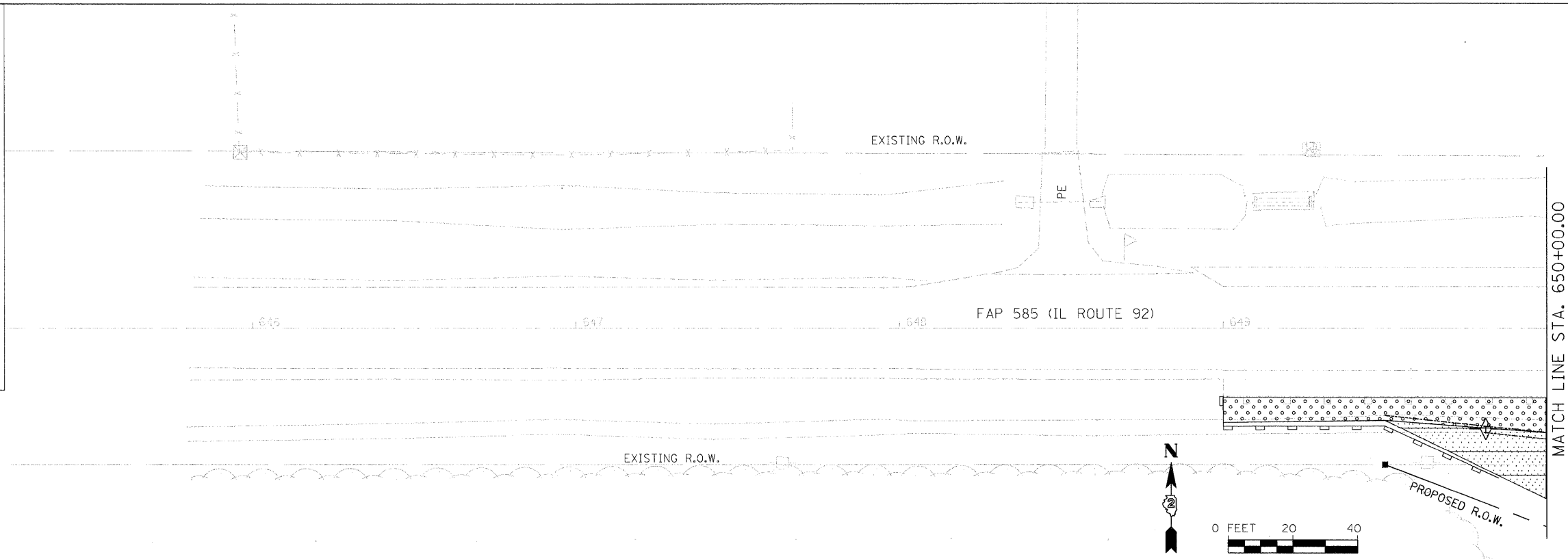


**LEGEND:**

-  PERIMETER EROSION BARRIER
-  INLET AND PIPE PROTECTION
-  TEMPORARY DITCH CHECK
-  RIPRAP, CLASS A5
-  ARTICULATED BLOCK REVETMENT MAT
-  SEEDING, CLASS 2A
-  SEEDING, CLASS 4



1. SEEDING SHALL BE OUT TO THE LIMITS OF CONSTRUCTION.
2. ALL ITEMS SHALL BE CONSTRUCTED AS SHOWN ON THE PLANS, ON STANDARD 280001, AND AS DIRECTED BY THE ENGINEER.

1170 SOUTH HOUBALT ROAD  
 JOLIET, ILLINOIS 60431  
 (815) 744-4200  
**PR**  
 PROFESSIONAL REGISTERED ENGINEER

FILE NAME =	USER NAME = brianf	DESIGNED -	REVISED -
st\joi\6300--6399\6346\027\micros\sh\sh\ter-erosion3.dgn		DRAWN -	REVISED -
		CHECKED -	REVISED -
		DATE -	REVISED -

**STATE OF ILLINOIS  
DEPARTMENT OF TRANSPORTATION**

<b>EROSION CONTROL</b>				
SCALE:	SHEET NO.	OF SHEETS	STA.	TO STA.

F.A.P. RTE. 585	SECTION 128 BR	COUNTY HENRY	TOTAL SHEETS 106	SHEET NO. 37	CONTRACT NO. 64C20
FED. ROAD DIST. NO. 2 ILLINOIS FED. AID PROJECT					