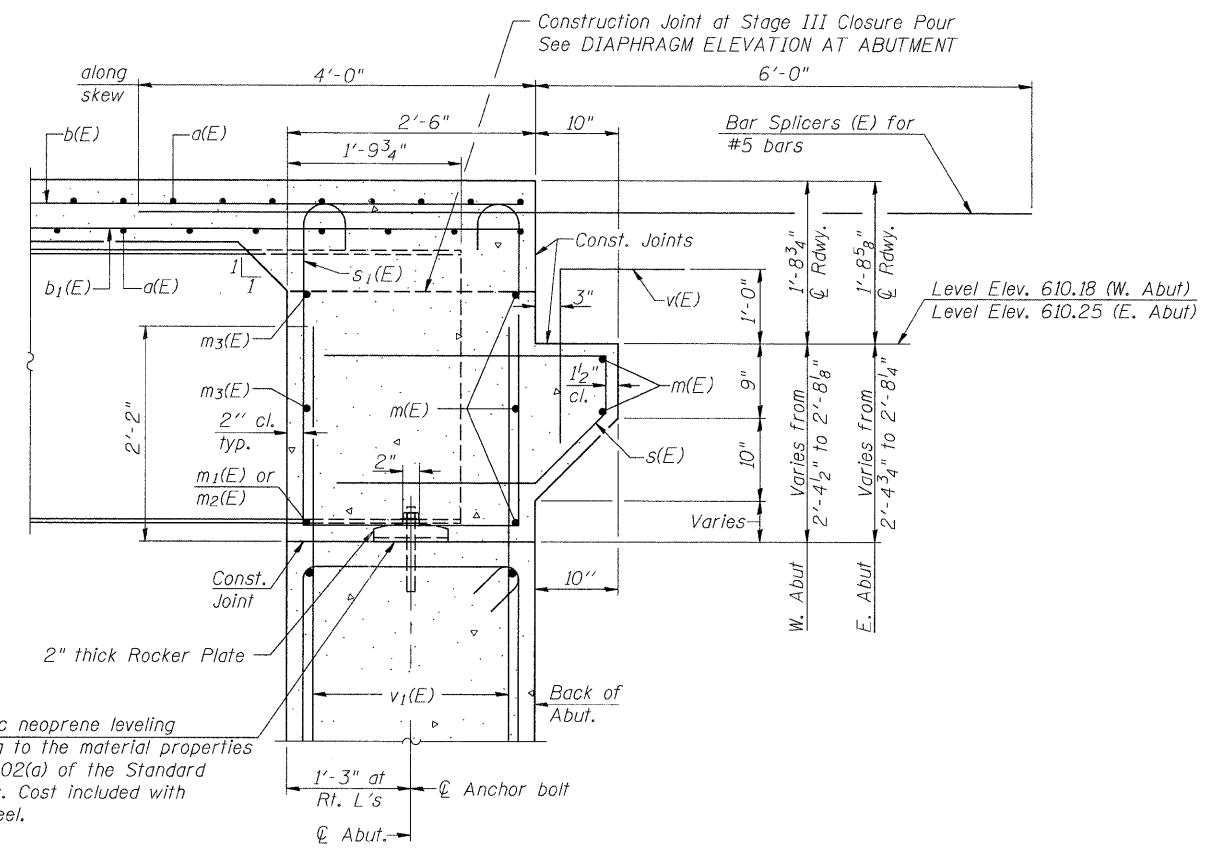


DIAPHRAGM ELEVATION AT ABUTMENT

Notes:
 Reinforcement bars in diaphragm are billed with superstructure on sheet 8 of 20.
 Concrete in diaphragm is included with Concrete Superstructure on sheet 8 of 20.
 For details of bars s(E) & s₁(E) see sheet 8 of 20.
 The s(E) and s₁(E) bars shall be placed parallel to the beams. Spacing for these bars shall be at right angles to the beams.
 Contractor to cut m₁(E) and m₃(E) bar at Stage Construction Line. Remaining portion of bar to be saved and spliced in Stage II Construction.

MIN. BAR LAP
 #6 bar = 3'-4"



SECTION A-A

Dimensions at right angles to abutment, except as shown.

FILE NAME = st:\p1\6200-6399\6346\27\micos\1\0370174-64C20-009-DIAPDET.dgn



USER NAME = brianf	DESIGNED MJD	REVISED -
PLOT SCALE =	CHECKED AJS	REVISED -
PLOT DATE = 7/19/2011	DRAWN B/JF	REVISED -
	CHECKED RRD	REVISED -

STATE OF ILLINOIS
 DEPARTMENT OF TRANSPORTATION

INTEGRAL ABUTMENT DIAPHRAGM DETAILS
 STRUCTURE NO. 037-0174

F.A.P. RTE. 585	SECTION 128 BR	COUNTY HENRY	TOTAL SHEETS 106	SHEET NO. 53
				CONTRACT NO. 64C20
ILLINOIS FED. AID PROJECT				