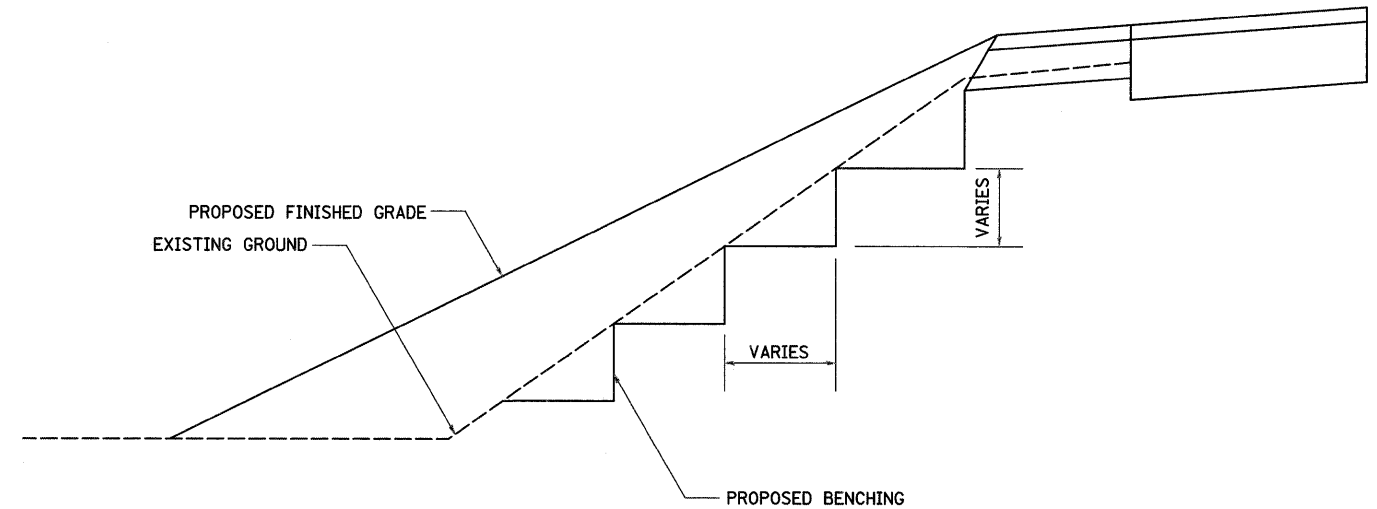


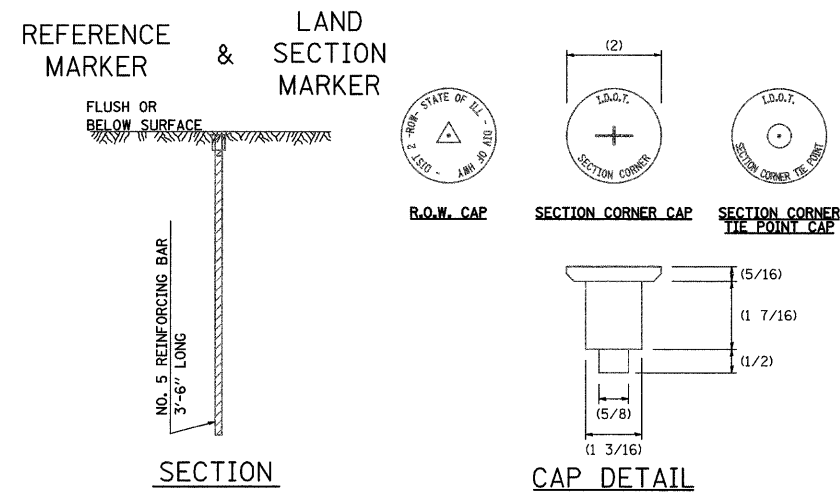
# TYPICAL BENCHING ON EXISTING EMBANKMENT



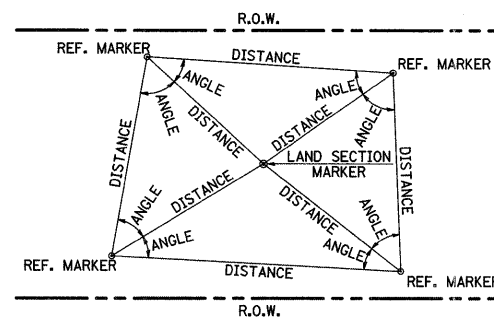
REVISED - 2-22-06

TYPICAL BENCHING ON EXISTING EMBANKMENT 50.4

## LAND SECTION & REFERENCE MARKERS



### METHOD OF REFERENCING MARKERS



- USE INSTRUMENT TIES TO NEARBY LAND-MARKS (STEEPLES, TOWERS, SILOS, ETC...)
- IN CULTIVATED FIELDS, SET 28" OR MORE BELOW GROUND SURFACE.
- IN FENCE LINE OR PROTECTED AREA SET TOP AT GROUND LEVEL SO AS NOT TO BE DISTURBED BY MOWING.

ALL DIMENSIONS ARE IN INCHES UNLESS OTHERWISE NOTED.

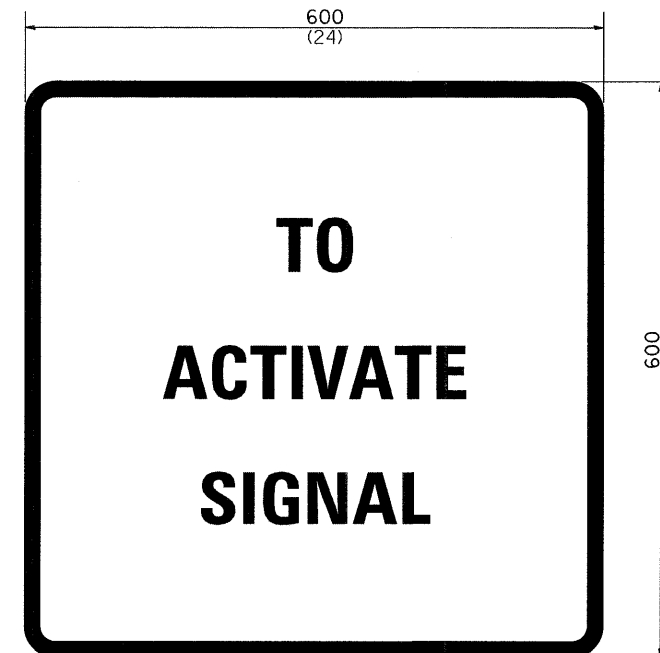
**METHOD OF REFERENCING POINTS**  
 REFERENCE MARKERS SHALL BE USED TO TIE IN PERMANENT LAND SECTION AND 1/4 SECTION CORNERS. WHERE LAND SECTION MARKERS FALL IN THE SHOULDERS OR GRAVEL SURFACES, THE TOP OF THE BAR SHALL BE KEPT 3" BELOW THE SURFACE. LAND SECTION MARKERS LOCATED IN TRAFFIC LANES SHALL BE REPLACED BY CORE DRILL AND RESETTING PIN.

ALUMINUM CAPS SHALL BE PLACED ON TOP OF THE REINFORCEMENT BAR. THERE ARE 3 TYPES OF CAPS, ONE FOR THE RIGHT-OF-WAY CORNERS, ONE FOR THE SECTION CORNERS AND ONE FOR THE SECTION CORNER TIE POINTS. THE CAPS WILL BE SUPPLIED BY THE SURVEYOR WHO IS RESPONSIBLE FOR MONUMENTING CORNERS.

REVISED - 03-05-10

LAND SECTION & REFERENCE MARKERS 63.4

## STOP LINE SIGN FOR TEMPORARY SIGNALS



- SIZE: 600(24) x 600(24)
- 100(4) CAPITAL LETTERS - BLACK
- 13(1/2) BORDER - BLACK
- WHITE REFLECTIVE - TYPE AP HIGH INTENSITY PRISMATIC SHEETING

### GENERAL NOTE:

THIS SIGN SHALL BE INSTALLED AT THE STOP LINE AS DIRECTED BY ENGINEER.

ALL DIMENSIONS ARE IN MILLIMETERS (INCHES) UNLESS OTHERWISE NOTED.

REVISED - 22-07	REGION 2 / DISTRICT 2 STANDARD				F.A.P. RTE.	SECTION	COUNTY	TOTAL SHEETS	SHEET NO.		
REVISED -	SCALE: 1.0000' / IN.	SHEET NO.	OF	SHEETS	STA.	TO STA.	585	128 BR	HENRY	106	69
REVISED -	CONTRACT NO. 64C20										
REVISED -	FED. ROAD DIST. NO. 2 ILLINOIS FED. AID PROJECT										