

DROP BOX NO. 5

LT STA. 363 + 65

GENERAL NOTES

This work shall be paid for at the contract unit price per Each for Drop Box No. 5

This work shall be done according to the applicable portion of 503, 508, and 540 of the Standard Specifications.

Contractor shall field verify Galvanized pipe length

Exposed edges shall be beveled 3/4"

Reinforcement bars shall conform to the requirements of ASTM A 706 Gr. 60

All steel pipe shall be standard weight (Sch. 40) unless otherwise noted.

All components of the Steel Pipe Grate System shall be galvanized according to the requirements of AASHTO M 111 or M 232 as applicable.

Fabrication of the steel Pipe Grate System shall conform to the requirements in Section 505 of the Standard Specifications unless noted otherwise.

Structural steel shapes and plates shall conform to the requirements of Article 1006.04 of the Standard Specifications. Steel pipes shall conform to the requirements of ASTM A 53 (Type E or S), Grade B.

Anchor rods shall conform to the min. strength requirements of ASTM F1554, Grade 105. Anchor rods shall be drilled and epoxy grouted according to the requirements of Section 584 of the Standard Specifications, except as shown.

Bolts shall conform to the requirements of Article 1006.08 of the Standard Specifications.

The minimum edge distance from the center of a hole to the free edge of a structural shape or plate shall be 1/2" unless noted otherwise.

Bolts and anchor rods shall be snug tightened by a few impacts of an impact wrench or the full force of a worker using an ordinary spud wrench.

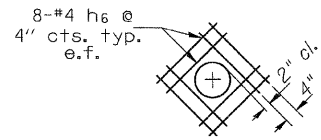
All cost associated with furnishing and installing the steel Pipe Grate system shall be included in the contract unit price of Each for Drop Box No. 5

All excavation/backfilling required for construction of the culvert as shown in these plans and in accordance with the Standard Specifications shall be included in the cost of Drop Box No. 5. See Plan & Profile Sheet for more information.

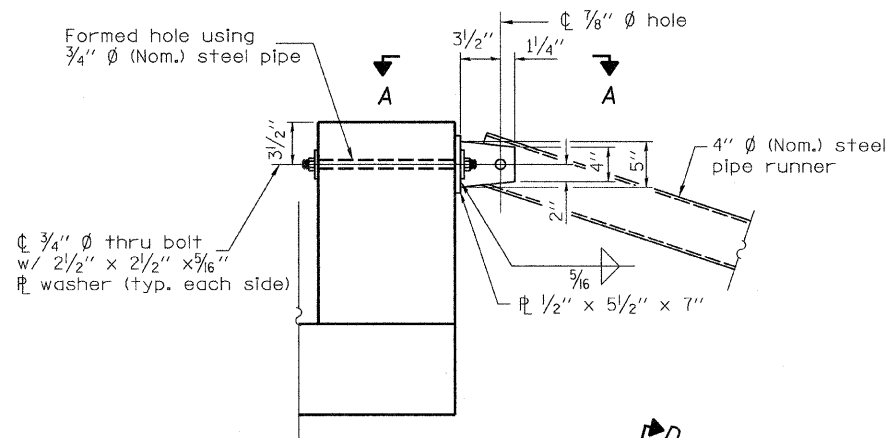
See Cross Section Sheet for more information.

8" field tile shall be incorporated into the construction of the drop box wall, see detail.

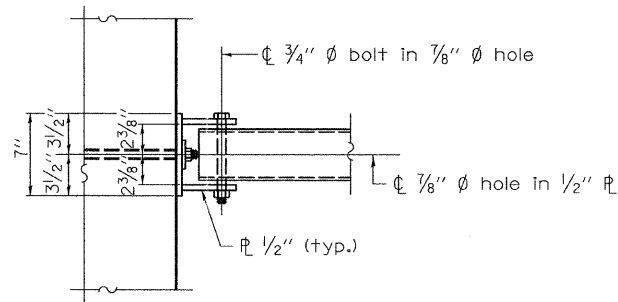
Precast alternate is allowed.



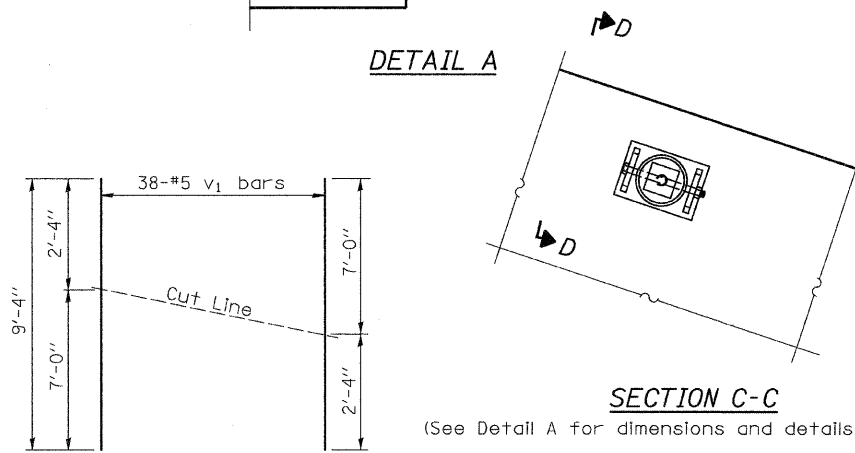
DETAIL FOR FIELD TILE
(Maximum 8" Ø)



DETAIL A

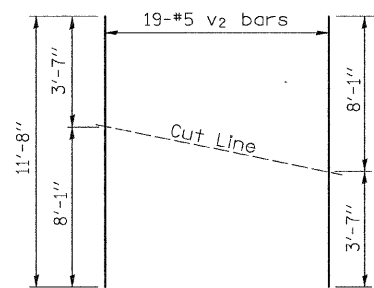


VIEW A-A



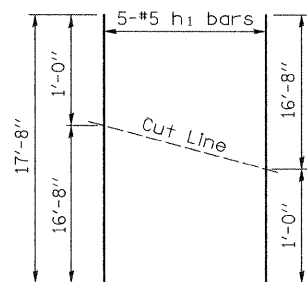
BAR CUTTING DIAGRAM

* Order v₁ bars full length. Cut as shown and use remainder of bars in opposite face.



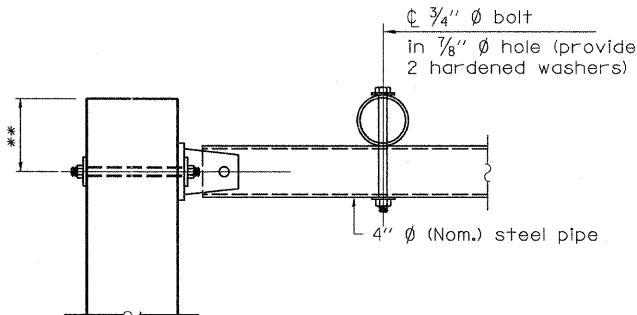
BAR CUTTING DIAGRAM

* Order v₂ bars full length. Cut as shown and use remainder of bars in opposite face.



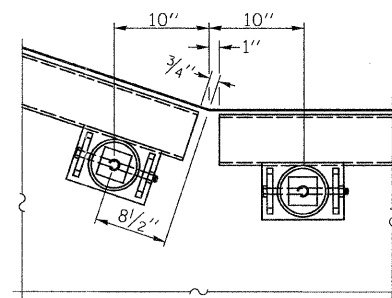
BAR CUTTING DIAGRAM

* Order h₁ bars full length. Cut as shown and use remainder of bars in opposite face.

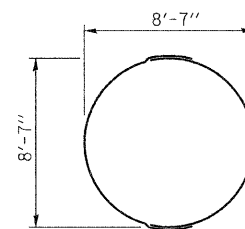


SECTION D-D

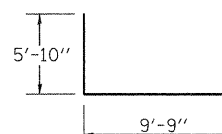
** Measured perpendicular to top of culvert wall. In addition, formed hole shall be located a minimum of 6" measured horizontally from any vertical joints necessary for construction of the culvert end section.



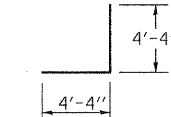
DETAIL B



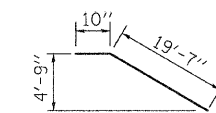
BAR h₅ (PAIR)



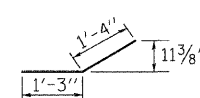
BAR u



BAR d



BAR f₁



BAR g

BILL OF MATERIAL

(For Information Only)

BAR	SIZE	NO.	LENGTH	SHAPE
d	5	113	8'-8"	□
f	6	4	9'-9"	—
f ₁	5	4	20'-5"	—
g	6	11	2'-7"	—
h	5	20	28'-7"	—
h ₁	5	10	17'-8"	—
h ₂	5	22	27'-7"	—
h ₃	5	68	9'-9"	—
h ₄	5	16	3'-3"	—
h ₅	6	4	16'-1"	—
h ₆	4	16	2'-0"	—
v	5	29	3'-5"	—
v ₁	5	38	9'-4"	—
v ₂	5	19	11'-8"	—
u	5	4	21'-5"	—

DESCRIPTION	UNIT	QTY
CONCRETE STRUCTURES	CU YD	18.7
REINFORCEMENT BARS	LB	4,280

DESCRIPTION	UNIT	QTY.
4" GALVANIZED STEEL PIPE	4e	8'-0"
	3e	19'-3"
	3e	7'-8"
3/4" Ø GALVANIZED STEEL BOLTS	EACH	12
END ASSEMBLY	EACH	6
SIDE ASSEMBLY	EACH	8

*** Includes all hardware and steel for assembly.

ROUTE NO.	SECTION	COUNTY	TOTAL SHEETS	SHEET NO.
FAS 221	(19,20)RS-2	ROCK ISLAND	231	55
CONTRACT NO. 64D72				
FED. ROAD DIST. NO. 7 ILLINOIS		FED. AID PROJECT		

DESIGNED	C.T.M.
CHECKED	B.A.N.
DRAWN	C.T.M.
CHECKED	B.A.N.

SHEET NO. 2
2 SHEETS