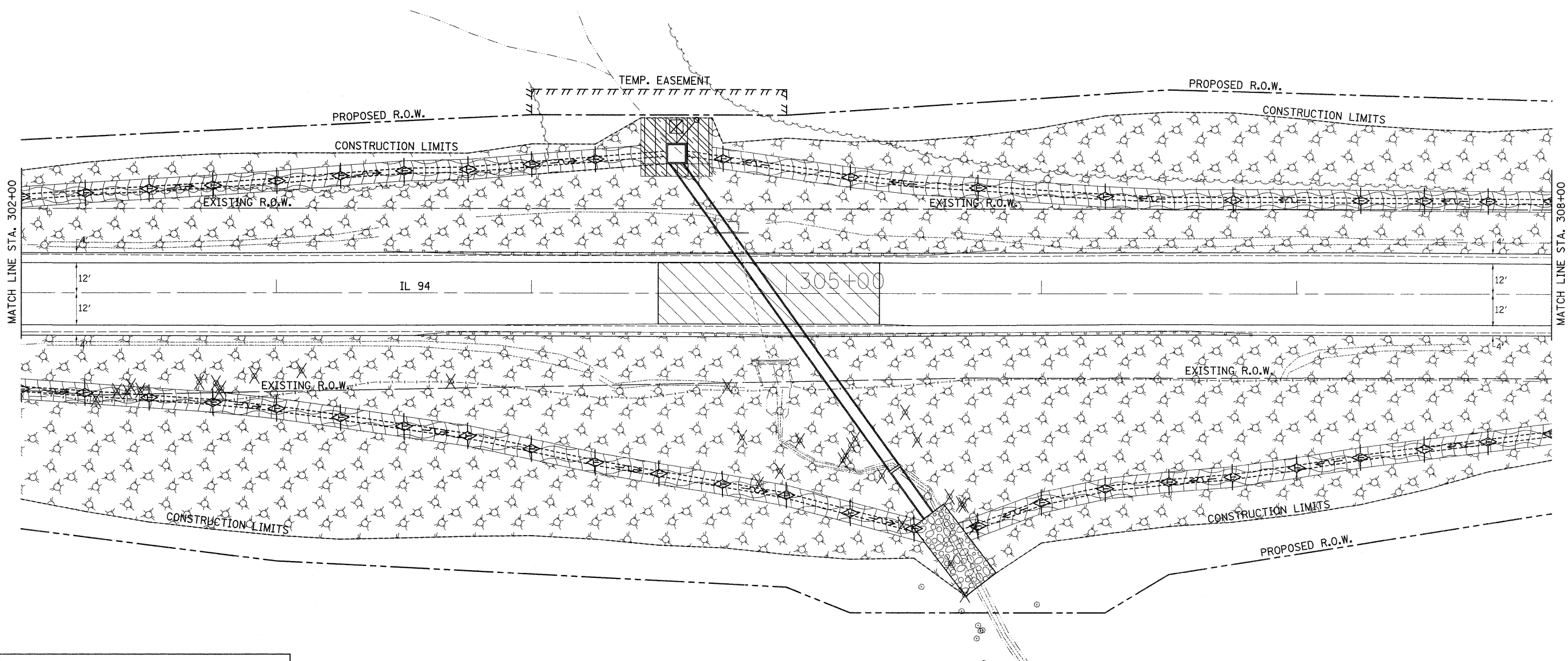
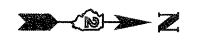
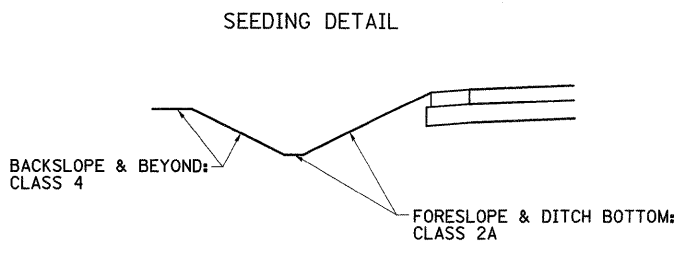


# EROSION CONTROL DETAILS



- = MULCH METHOD 3
- = TEMPORARY DITCH CHECKS
- = EROSION CONTROL BLANKET
- = PERIMETER EROSION BARRIER
- = INLET PIPE PROTECTION
- = RIP RAP
- = TURF REINFORCEMENT MAT



FILE NAME =	USER NAME = grantpm	DESIGNED -	REVISED -
ct:\pw_work\psidot\grantpm\d8184877\0212\07sht-erosion.dgn		DRAWN -	REVISED -
	PLOT SCALE = 20,0000' / 1" =	CHECKED -	REVISED -
	PLOT DATE = Thu Jun 23 08:19:01 2011	DATE -	REVISED -

**STATE OF ILLINOIS  
DEPARTMENT OF TRANSPORTATION**

**EROSION CONTROL DETAILS**

SCALE:      SHEET NO.    OF    SHEETS    STA.      TO STA.

* 221,213 & 220 ** ROCK ISLAND & MERCER COUNTY	
F.A.S. RTE. *	SECTION (19,20)RS-2
COUNTY **	TOTAL SHEETS 231
SHEET NO. 69	
CONTRACT NO. 64D72	
ILLINOIS FED. AID PROJECT	