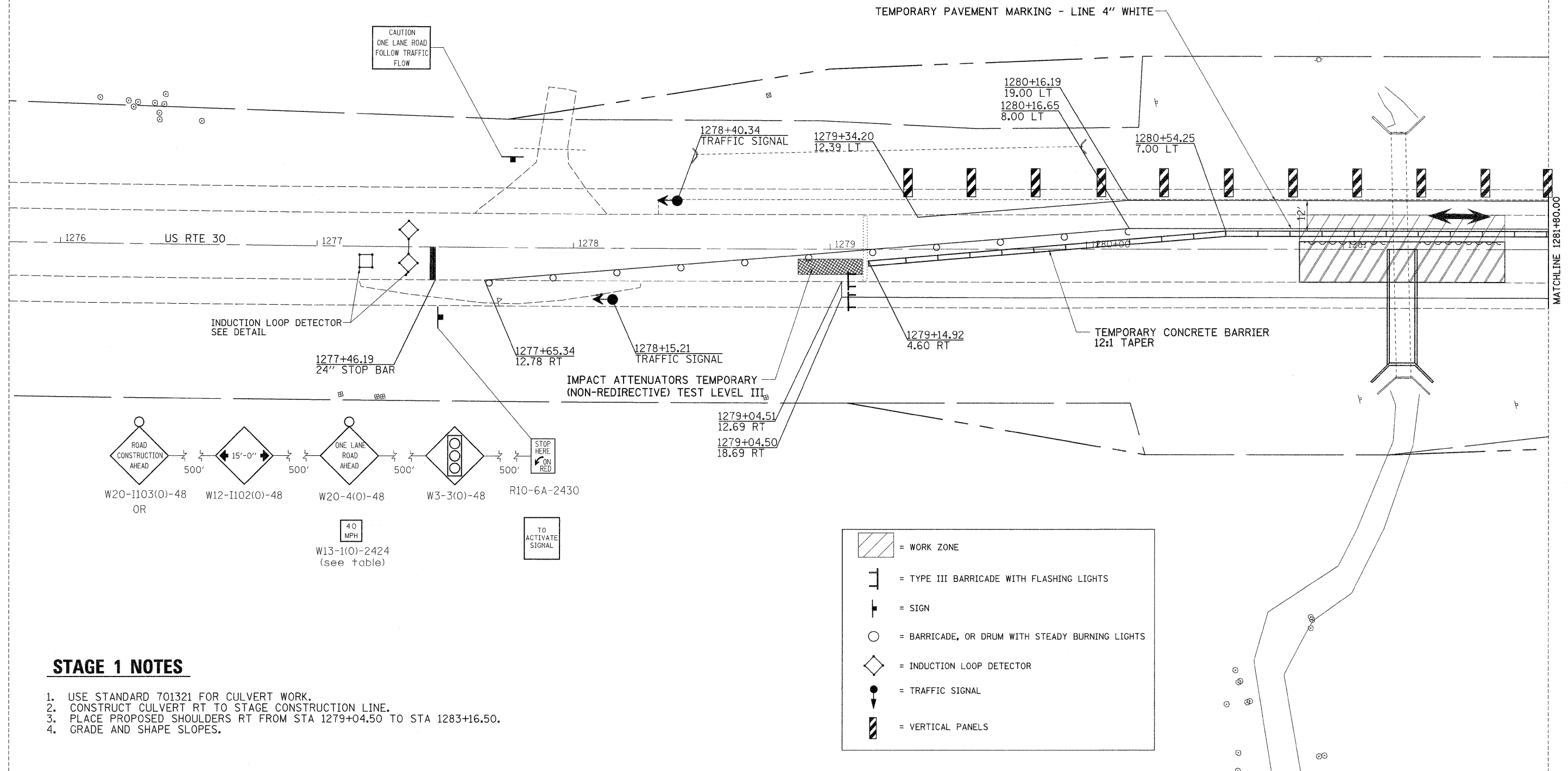


STAGE 1



STAGE 1 NOTES

1. USE STANDARD 701321 FOR CULVERT WORK.
2. CONSTRUCT CULVERT RT TO STAGE CONSTRUCTION LINE.
3. PLACE PROPOSED SHOULDERS RT FROM STA 1279+04.50 TO STA 1283+16.50.
4. GRADE AND SHAPE SLOPES.

FILE NAME =	USER NAME = hensonke	DESIGNED -	REVISED -	STATE OF ILLINOIS DEPARTMENT OF TRANSPORTATION	US 30 STAGING DETAIL SHEETS	F.A.P. RTE.	SECTION	COUNTY	TOTAL SHEETS	SHEET NO.	
ct\pw\work\p\dot\hensonke\d0133232\020609-sh1-staging.dgn		DRAWN -	REVISED -			309	15T-1	WHITESIDE	74	25	
PLOT SCALE = 20.0000' / in.		CHECKED -	REVISED -			SCALE: SHEET NO. OF SHEETS STA. TO STA.					
PLOT DATE = Fri Jun 24 07:44:14 2011		DATE -	REVISED -			ILLINOIS FED. AID PROJECT					