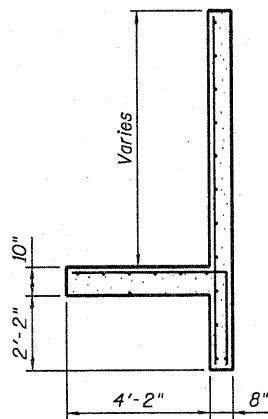


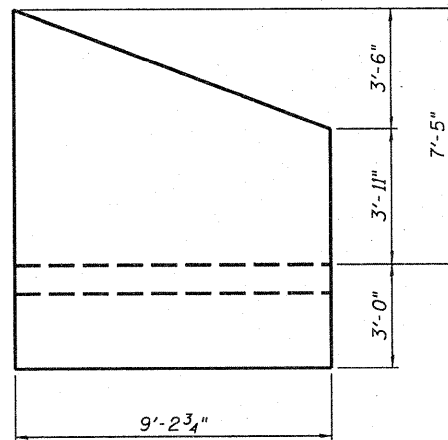
REMOVAL PLAN

Existing south end section of 10' x 6' reinforced concrete box culvert - SN 098-1020



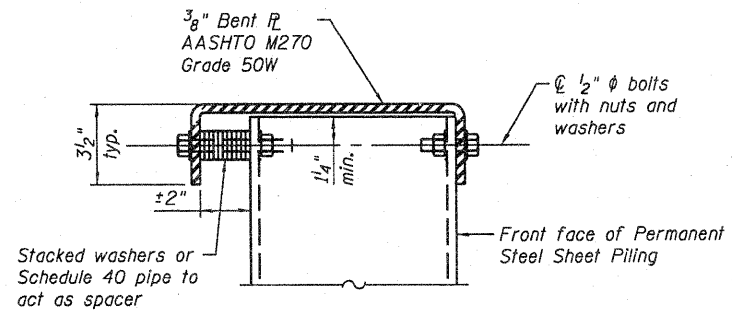
SECTION A-A

Existing reinforced concrete wingwall to be removed



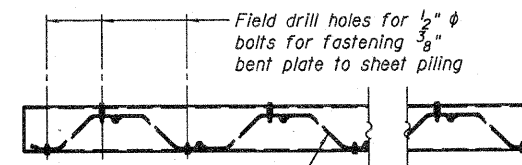
ELEVATION

Existing reinforced concrete wingwall to be removed



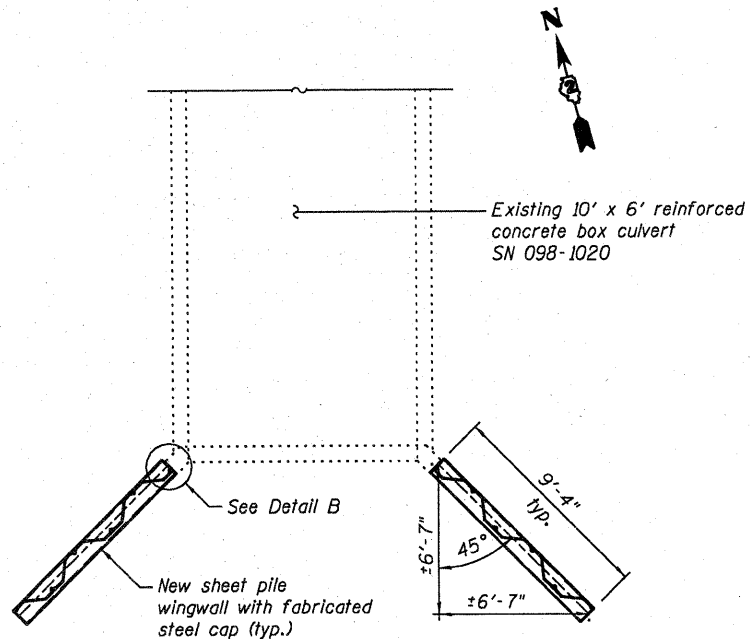
SECTION C-C

Fabricated steel cap



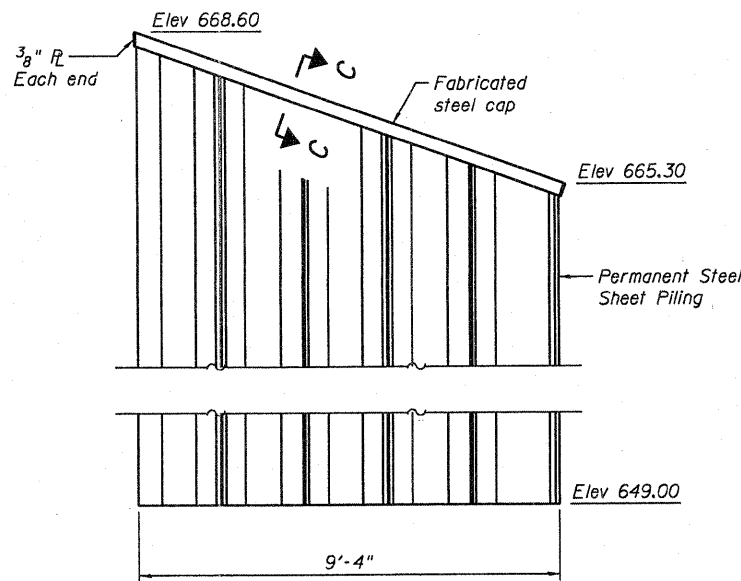
PLAN

Showing connection of fabricated steel cap to permanent steel sheet piling

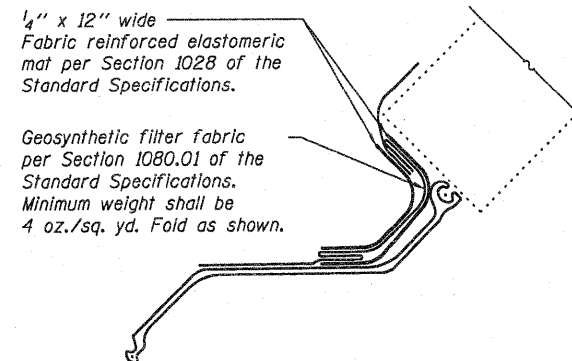


PLAN

Showing new sheet pile wingwalls



WINGWALL ELEVATION



DETAIL B

FILE NAME = MAP:\projects\2010\060120_P1B_157_25\cadd\structural\Drawings\4 IL 3B_ShpPile_EndSection\0981020-64F23-002-Details.dgn



USER NAME =	DESIGNED - DLS	REVISED -
FILE NAME =	CHECKED - AEU	REVISED -
PLOT SCALE =	DRAWN - DLS	REVISED -
PLOT DATE = 06/24/2011	CHECKED - AEU	REVISED -

STATE OF ILLINOIS
DEPARTMENT OF TRANSPORTATION

END SECTION DETAILS
STRUCTURE NO. 098-1020

SHEET NO. 2 OF 3 SHEETS

F.A.P. RTE. 309	SECTION 15T-1	COUNTY WHITESIDE	TOTAL SHEETS 74	SHEET NO. 42
ILLINOIS FED. AID PROJECT			CONTRACT NO. 64F23	