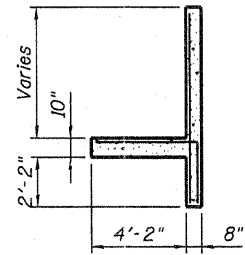
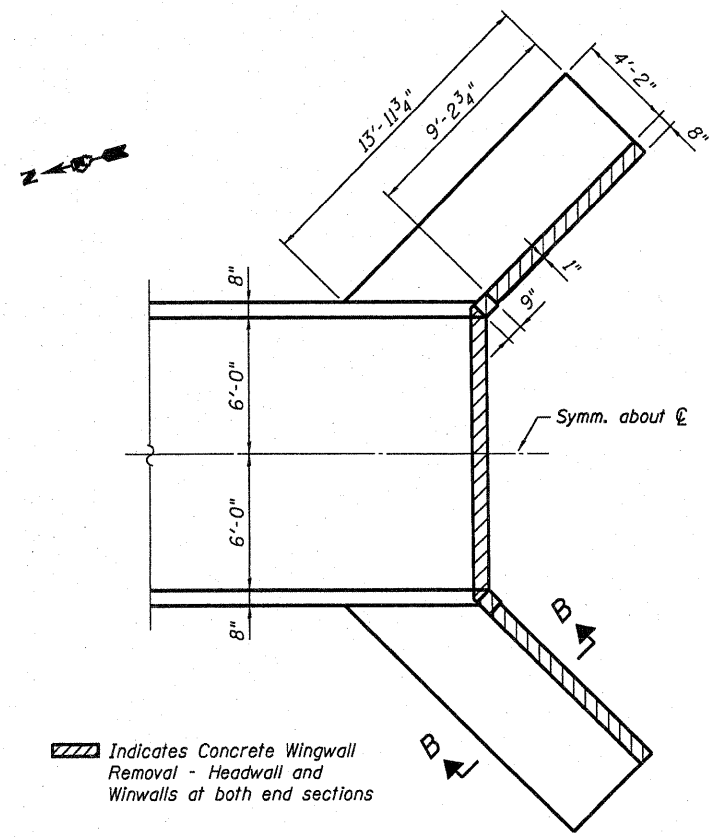


ELEVATION



SECTION B-B



PLAN

Showing end section and limits of removal

TOTAL BILL OF MATERIAL

ITEM	UNIT	TOTAL
Removal and Disposal of Unsuitable Material	Cu. Yd.	45
Stone Riprap, Class A4	Sq. Yd.	151
Filter Fabric	Sq. Yd.	151
Concrete Structures	Cu. Yd.	19.7
Reinforcement Bars	Pound	1,020
Name Plates	Each	1
Insertion Culvert Liner 60"	Foot	244
Controlled Low-Strength Material	Cu. Yd.	3.4
Breaker-Run Crushed Stone	Ton	61
Concrete Wingwall Removal	Each	2

STATION 1503+73
 BUILT 2011 BY
 STATE OF ILLINOIS
 FAP RTE. 309 - SEC. 15T-1
 LOADING HS20
 STRUCTURE NO. 098-1021

NAME PLATE
 See Std. 515001

GENERAL NOTES

- Plan dimensions and details relative to existing plans are subject to nominal construction variations. The Contractor shall field verify existing dimensions and details affecting new construction and make necessary approved adjustments prior to construction or ordering of materials. Such variations shall not be cause for additional compensation for a change in scope of the work, however, the Contractor will be paid for the quantity actually furnished at the unit price bid for the work.
- A preliminary inspection indicates there is buckled rebar from the bottom slab that projects up into the culvert. This condition exists approximately 35 feet south of the upstream entrance of the culvert. The Contractor shall visit the site to determine if any conditions exist in the existing culvert that require adjustments prior to liner placement. These conditions will not be cause for additional compensation but shall be included in the cost for Insertion Culvert Liner 60".
- Between the existing box culvert ends and the new reinforced concrete end sections, removal of unsuitable material and the placement of stone will be required. The unsuitable material will be removed to a depth as directed by the Engineer. To support the 2 - 63" OD HDPE pipes between the existing culvert ends and the new end sections, a 1'-6" layer of Breaker-Run Crushed Stone capped with a 6" layer of CA 7 shall be provided. To determine quantities, a total depth of 2'-0" has been assumed for the removal of the unsuitable material and stone depth.

The cost of the CA 7 cap will not be paid for separately, but will be included in the cost for the Breaker-Run Crushed Stone.

Between the existing culvert ends and the new concrete end sections, Controlled Low-Strength Material shall be placed between the pipes from the top of the CA 7 to the springline of the pipes.
- After the concrete end sections have been completed, the HDPE pipe lengths, between the existing culvert ends and the new end sections, shall be backfilled with CA 7 as shown in the detail. The cost for the backfill will not be paid for separately but shall be included in the cost for Insertion Culvert Liner 60".
- Removal of unsuitable material and a stone base will also be required under the new end section aprons. The unsuitable material will be removed to a depth as directed by the Engineer. A 1'-6" layer of Breaker-Run Crushed Stone capped with a 6" layer of CA 7 shall be provided. To determine quantities, a depth of 2'-0" has been estimated for the removal depth and stone depth. The CA 7 stone will not be paid for separately, but shall be included in the cost for the Breaker-Run Crushed Stone.
- The coarse aggregate behind the headwalls and the filter fabric covering for the openings shall not be paid for separately, but shall be included in the cost for Concrete Structures.
- Reinforcement bars shall conform to the requirements of ASTM A 706 Gr 60.
- Precast end sections are not allowed.

FILE NAME = P:\CBBREL - WEST Projects\2009\12\108 1101 - Various Structures\Structural\Wgn\Work Order - 12 IL 30 Culvert to SN 098-1021\0981021-64F23-982-GenData.dgn

WILLS BURKE KELSEY ASSOCIATES LTD.
 118 West Main Street, Suite 201
 St. Charles, Illinois 60174
 (630) 443-7755

USER NAME =	DESIGNED - DLS	REVISED -
FILE NAME =	CHECKED - AEU	REVISED -
PLOT SCALE =	DRAWN - DLS	REVISED -
PLOT DATE = 06/24/2011	CHECKED - AEU	REVISED -

STATE OF ILLINOIS
DEPARTMENT OF TRANSPORTATION

GENERAL DATA - GENERAL NOTES AND BILL OF MATERIAL
STRUCTURE NO. 098-1021
 SHEET NO. 2 OF 4 SHEETS

F.A.P. RTE. 309	SECTION 15T-1	COUNTY WHITESIDE	TOTAL SHEETS 74	SHEET NO. 46
ILLINOIS FED. AID PROJECT			CONTRACT NO. 64F23	