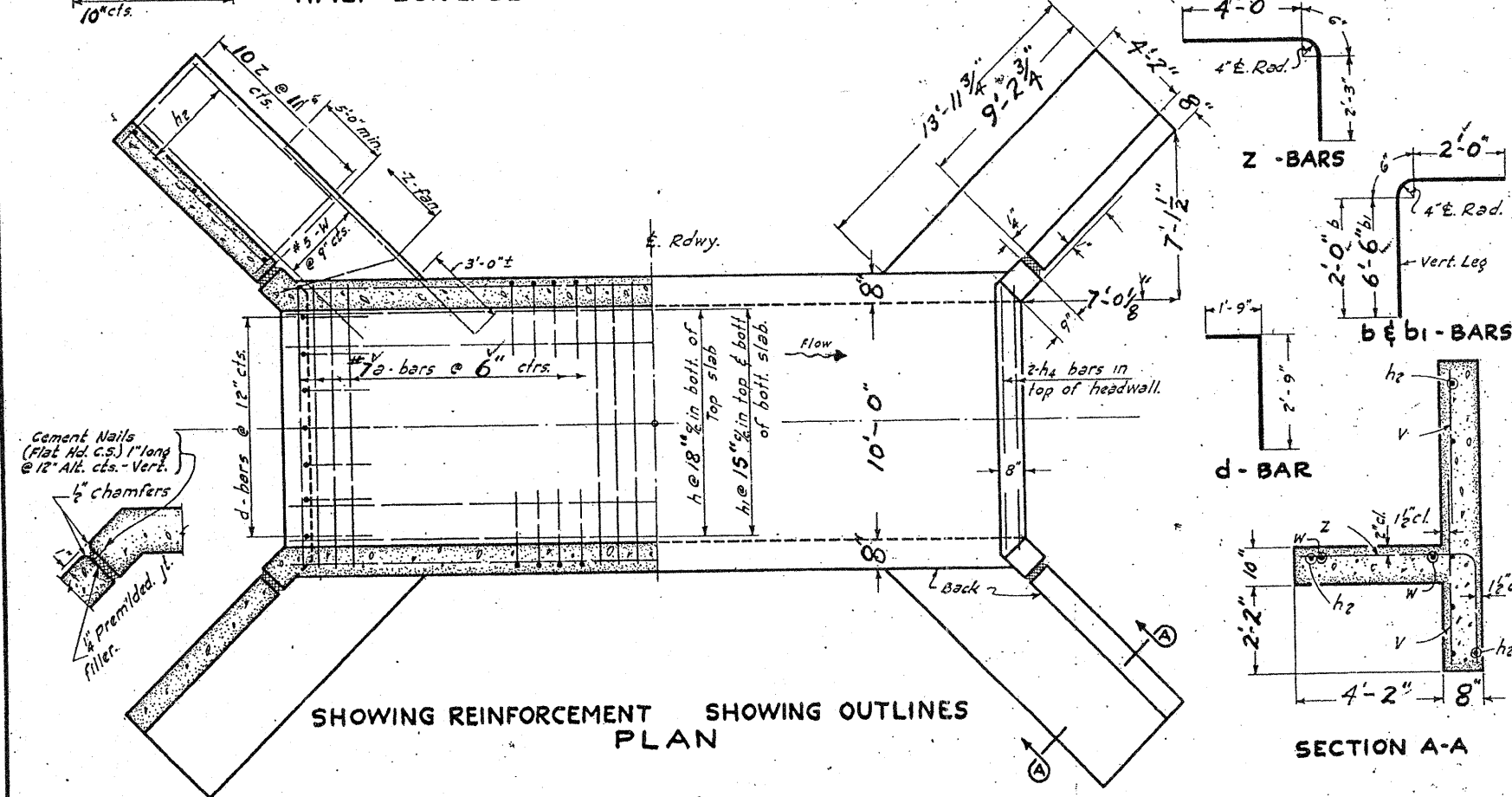
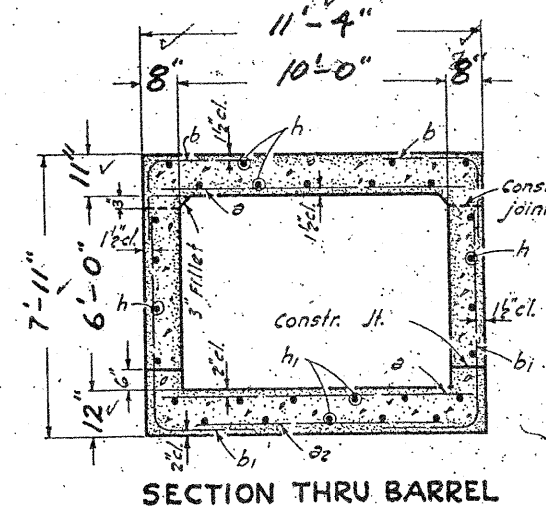
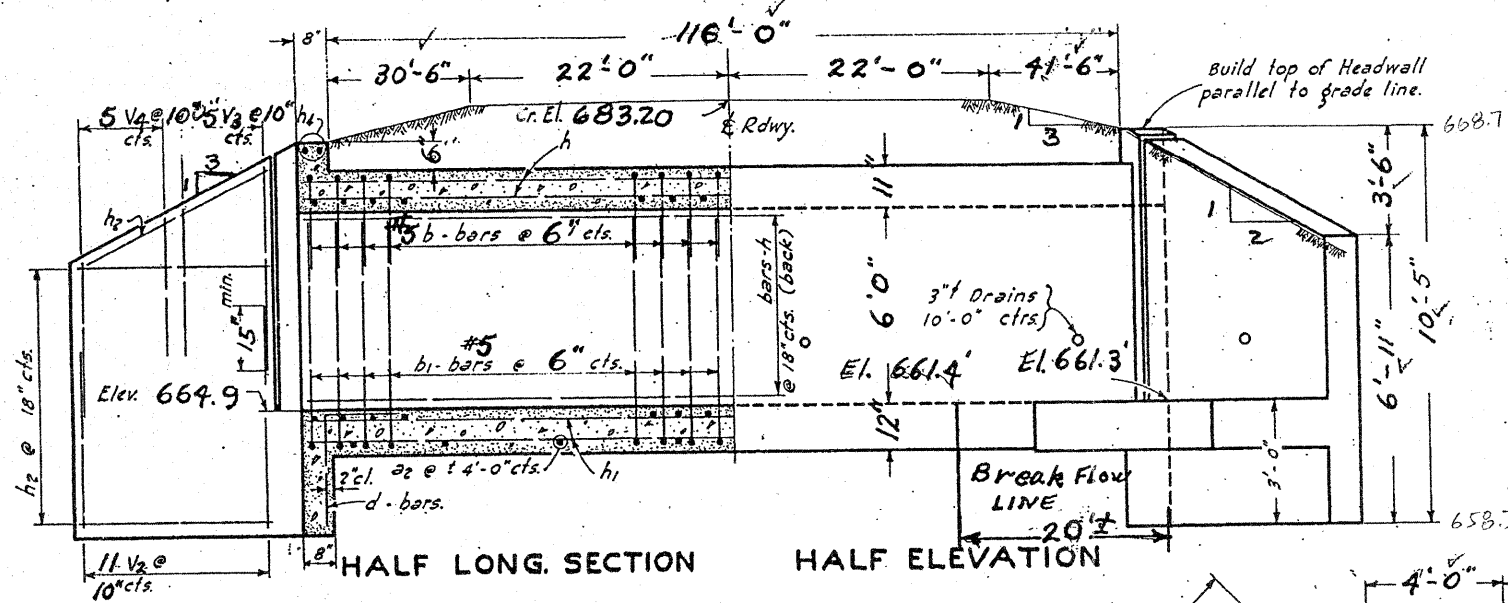


P.I. 337+25 El. 680.41'
 VC = 600, X = 3.00 Grade - 1.00% to + 4.00%

STATE OF ILLINOIS
 DEPARTMENT OF PUBLIC WORKS & BUILDINGS
 DIVISION OF HIGHWAYS

ROAD DIST. DIST. NO.	SECTION	COUNTY	TOTAL SHEETS	SHEET NO.	SHEET NO. / SHEETS
6	15,16,29	Whiteside	90	75	1



BILL OF MATERIAL

BAR	NO.	SIZE	LENGTH
a	470	#7	11'-0"
a2	30	#4	7'-6"
b	470	#5	4'-6"
b1	420	#5	9'-0"
d	20	#4	4'-6"
h	95	#4	24'-6"
h1	85	#5	24'-9"
h2	32	#4	9'-0"
h4	4	#6	10'-6"
V2	44	#4	5'-0"
V3	20	#4	5'-9"
V4	20	#4	4'-0"
W	24	#5	12'-6"
Z	40	#5	6'-9"

Class 'X' concrete Cu. Yds. 144.3
 Reinforcement bars Lbs. 22,270

Note: All bars shall be round ASTM A305-49. The size number is the number of 1/8 inches in the nominal diameter.

STANDARD	COMPUTED	FRZ
	CHECKED	
	DRAWN	B. H. Wood.
	CHECKED	
SPECIAL	ASSEMBLED	D.C. 1-52
	CHECKED	M.L.M.

EXAMINED 10-29-52
 W. E. Hanson
 PASSED
 APPROVED J. N. Burke

GENERAL NOTES
 class x concrete shall be used thru-out.
 Exposed edges shall be beveled.
 For backfilling & embankment see standard specifications.

f_s = 20,000 #/sq
 f_c = 1200 #/sq
 R_s = 10
 H-20 LOADING

Sta. 337+25
 SBI Rte. 6 Sec. (15,16,29)R

Footings & Reinf. Revised - 11-50 - J.S.M.