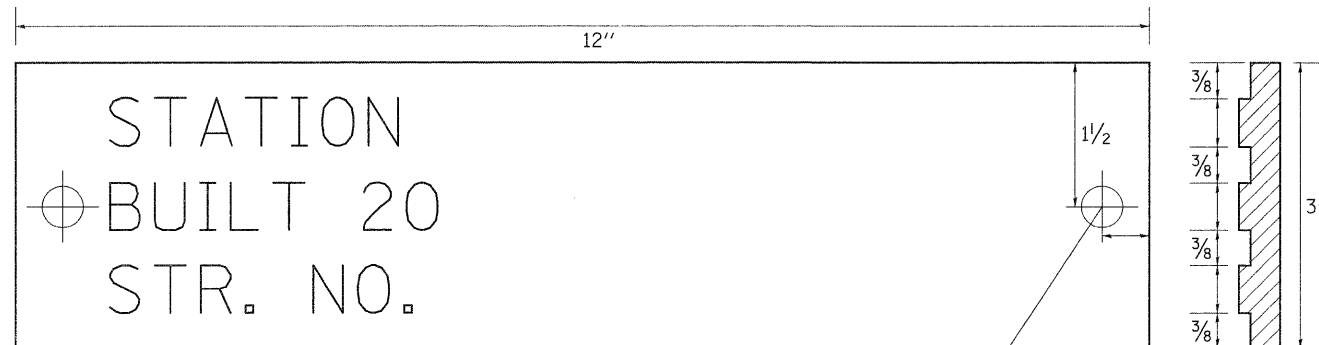
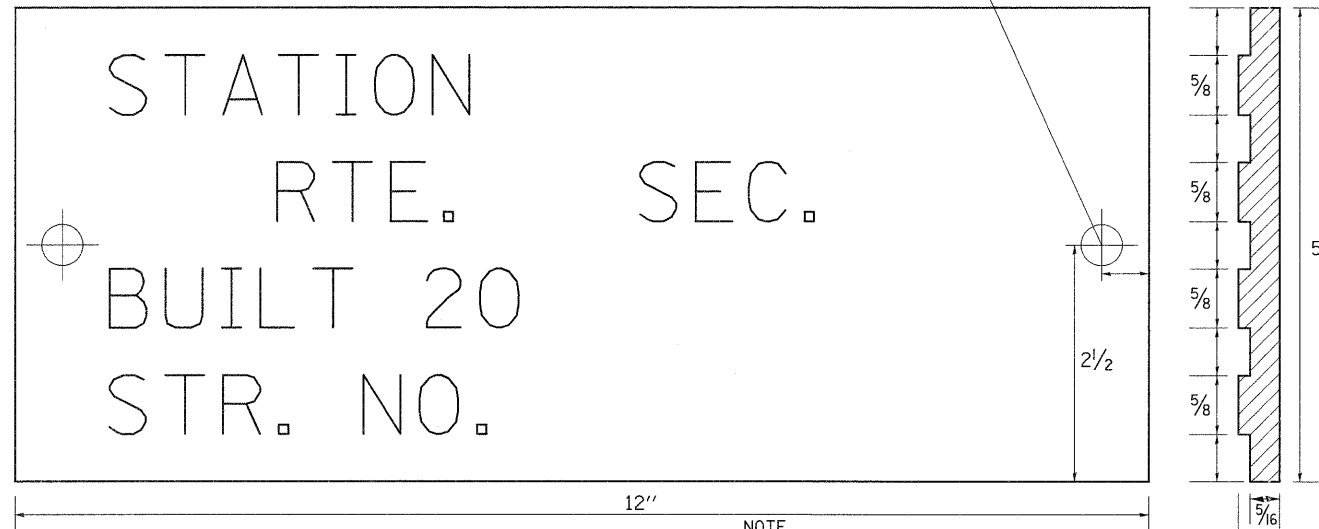


NAME PLATE FOR CULVERTS

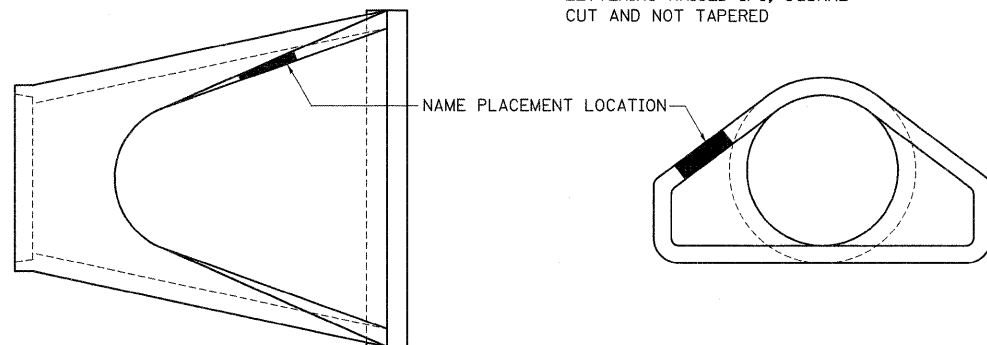
FOR 24''-42'' PIPE CULVERTS



FOR 48''-84'' PIPE CULVERTS



NOTE
LETTERING RAISED 1/8, SQUARE
CUT AND NOT TAPERED



DESIGNERS NOTE

NAME PLATES SHALL BE FURNISHED & INSTALLED ACCORDING TO SECTION 515 OF THE STANDARD SPECIFICATIONS, EXCEPT 2 BOLTS SHALL BE USE TO FASTEN THE PLATE TO THE END SECTION.

USE STANDARD 515001 FOR BRIDGES AND MULTI-CELL CULVERTS WITH SPANS OF 20' OR MORE MEASURED ALONG THE CENTERLINE AT THE HIGHWAY.

USE THIS DETAIL FOR ALL OTHER PIPE CULVERTS & BOX CULVERTS WITH STRUCTURE NUMBERS. INCLUDE THE INFORMATION TO FILL OUT THE NAME PLATE FOR EACH CULVERT.

IN BOTH CASES INCLUDE A PAY ITEM FOR NAME PLATES.

REVISED - 5-27-09

STATION	STRUCTURE NO.

REVISED -	REGION 2 / DISTRICT 2 STANDARD	F.A.P. RTE.	SECTION	COUNTY	TOTAL SHEETS	SHEET NO.
REVISED -		309	15T-1	WHITESIDE	74	54
REVISED -		CONTRACT NO. 64F23				
REVISED -		SCALE: 28,0000 / 1"	SHEET NO.	OF	SHEETS	STA.