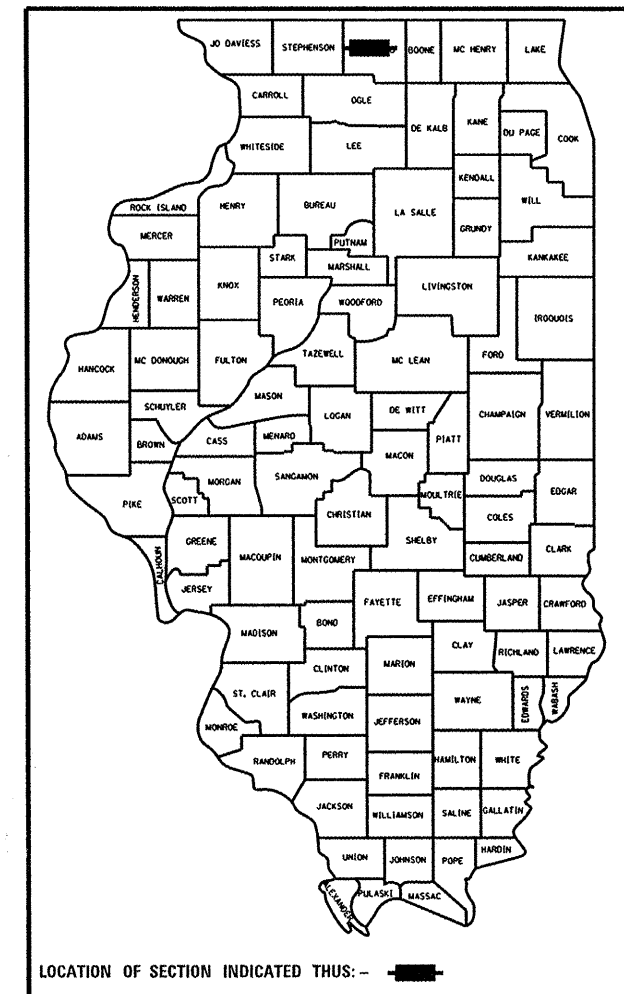


STATE OF ILLINOIS  
DEPARTMENT OF TRANSPORTATION  
DIVISION OF HIGHWAYS  
**PROPOSED  
HIGHWAY PLANS**

F.A.P. RTE.	SECTION	COUNTY	TOTAL SHEETS	SHEET NO.
301	(17, 40)M-3	WINNEBAGO	17	1
		ILLINOIS	CONTRACT NO. 64H15	

long section number  
multiple county names

D92-082-11

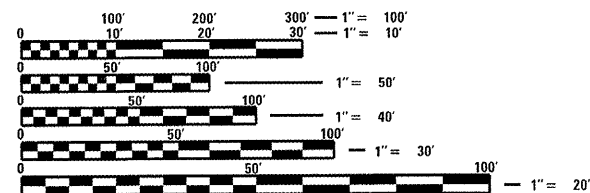
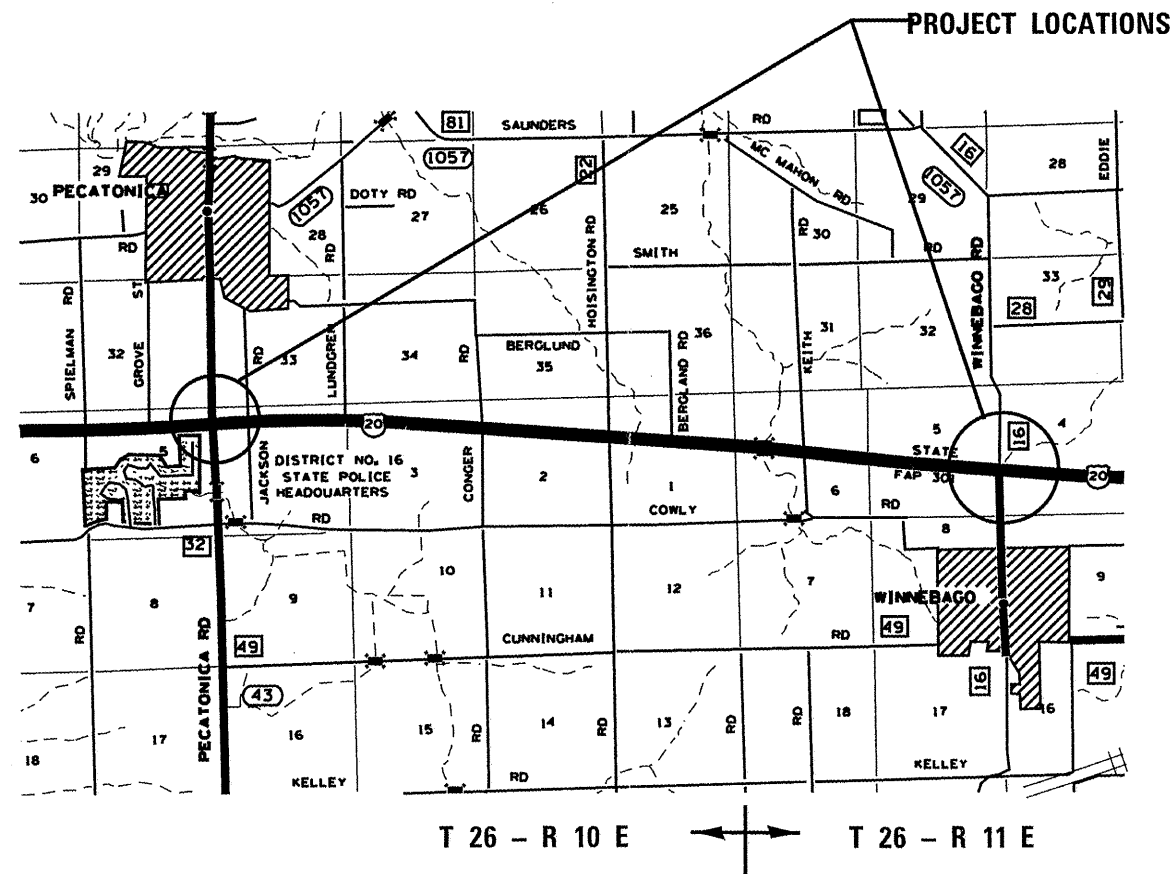


- INDEX OF SHEETS**
- 1 COVER SHEET & INDEX OF SHEETS
  - 2 SUMMARY OF QUANTITIES
  - 3 GENERAL NOTES & UTILITIES
  - 4-7 PLAN SHEETS
  - 8-13 PAVEMENT MARKING DETAIL
  - 14-17 DISTRICT STANDARD 41.1

- 701106-2 OFF ROAD OPERATIONS, MULTILANE, MORE THAN 15' (4.5m) AWAY
- 701101-02 OFF ROAD OPERATIONS MULTILANE, 15' (4.5m) TO 24" (600mm) FROM PAVEMENT EDGE
- 701400-05 APPROACH TO LANE CLOSURE, FREEWAY/EXPRESSWAY
- 701406-06 LANE CLOSURE FREEWAY/EXPRESSWAY
- 701426-04 LANE CLOSURE, MULTILANE, INTERMITTENT OR MOVING OPERATIONS FOR SPEEDS > 45 MPH
- 701901 TRAFFIC CONTROL DEVICES
- 701701-07 URBAN LANE CLOSURE, MULTILANE INTERSECTION
- 873001-02 TRAFFIC SIGNAL GROUNDING AND BONDING
- 814001-02 HANDHOLES

**FAP ROUTE 301 (US 20)**  
**SECTION (17, 40)M-3**  
**PROJECT: H5IP-0301(069)**  
**TYPE of IMPROVEMENT**  
**WINNEBAGO COUNTY**

C-92-123-11



FULL SIZE PLANS HAVE BEEN PREPARED USING STANDARD ENGINEERING SCALES. REDUCED SIZED PLANS WILL NOT CONFORM TO STANDARD SCALES. IN MAKING MEASUREMENTS ON REDUCED PLANS, THE ABOVE SCALES MAY BE USED.

J.U.L.I.E.  
JOINT UTILITY LOCATION INFORMATION FOR EXCAVATION  
1-800-892-0123  
OR 811

PROJECT ENGINEER SCOTT KULLERSTRAND 815-284-5468  
PROJECT MANAGER KRISTINE HILL 815-284-5476

CONTRACT NO. contract 64H15

STATE OF ILLINOIS  
DEPARTMENT OF TRANSPORTATION  
DIVISION OF HIGHWAYS

SUBMITTED 6/27/2011

[Signature]  
DEPUTY DIRECTOR OF HIGHWAYS, REGION ENGINEER

Aug 19 2011  
Scott E. Stitt, P.E.  
ENGINEER OF DESIGN AND ENVIRONMENT

Aug 19 2011  
Christine M. Reed  
DIRECTOR OF HIGHWAYS, CHIEF ENGINEER

**PRINTED BY THE AUTHORITY  
OF THE STATE OF ILLINOIS**