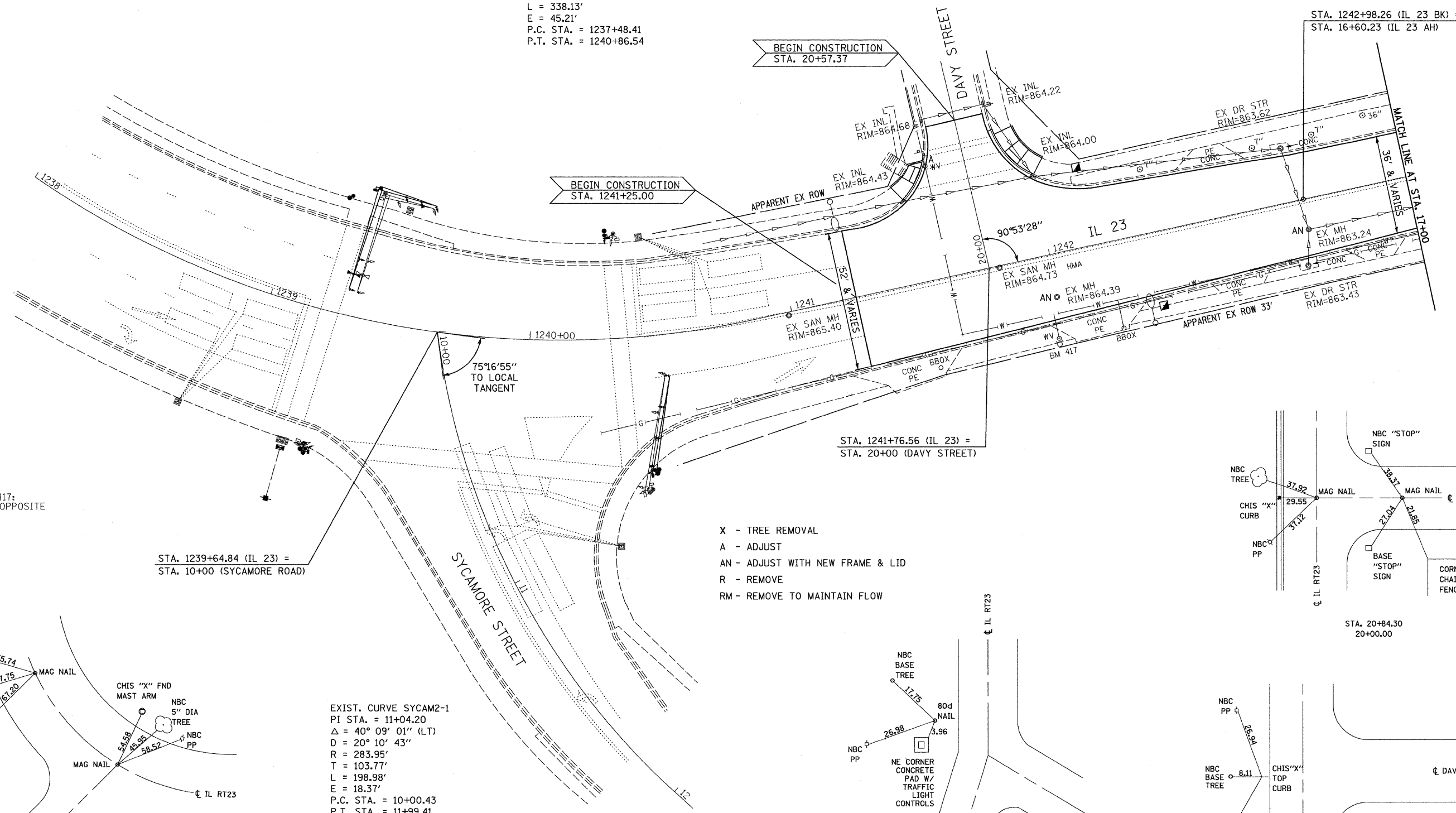


EXIST. CURVE RT23NRTH-1
 PI STA. = 1239+31.98
 $\Delta = 55^\circ 20' 56''$ (LT)
 $D = 16^\circ 22' 09''$
 $R = 350.02'$
 $T = 183.57'$
 $L = 338.13'$
 $E = 45.21'$
 P.C. STA. = 1237+48.41
 P.T. STA. = 1240+86.54



BENCHMARK #417:
 E. BOLT F.H. OPPOSITE
 DAVY STREET
 EL.=866.74

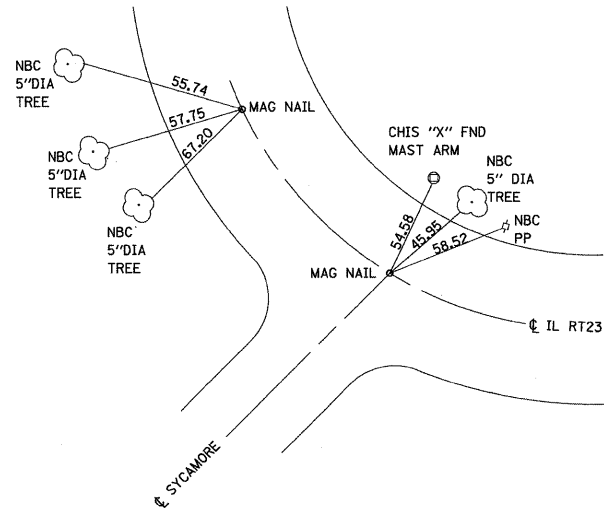
STA. 1239+64.84 (IL 23) =
 STA. 10+00 (SYCAMORE ROAD)

STA. 1241+76.56 (IL 23) =
 STA. 20+00 (DAVY STREET)

STA. 1242+98.26 (IL 23 BK) =
 STA. 16+60.23 (IL 23 AH)

- X - TREE REMOVAL
- A - ADJUST
- AN - ADJUST WITH NEW FRAME & LID
- R - REMOVE
- RM - REMOVE TO MAINTAIN FLOW

EXIST. CURVE SYCAM2-1
 PI STA. = 11+04.20
 $\Delta = 40^\circ 09' 01''$ (LT)
 $D = 20^\circ 10' 43''$
 $R = 283.95'$
 $T = 103.77'$
 $L = 198.98'$
 $E = 18.37'$
 P.C. STA. = 10+00.43
 P.T. STA. = 11+99.41



PC STA. 1237+48.41
 10+00.00

CP 23501 - STA. 1239+14.66- 51.43 RT

CP 23510- STA. 1241+65.11- 29.44RT

FILE NAME = 0366983-SHT-PLAN-1238-17.DGN	USER NAME = ---	DESIGNED - DJD	REVISED - ---	STATE OF ILLINOIS DEPARTMENT OF TRANSPORTATION	PLAN - IL 23	F.A.P. RTE. = 68	SECTION (28)N, TS & I	COUNTY DEKALB	TOTAL SHEETS 120	SHEET NO. 15
	PLOT SCALE = 1"=20'	CHECKED - DJD	REVISED - ---			SCALE: 1"=20'	SHEET NO. ___ OF ___ SHEETS	STA. 1238+00 TO STA. 17+00	CONTRACT NO. 66983	
PLOT DATE = 01/11	DATE - 01/11	REVISED - ---	REVISED - ---	FED. ROAD DIST. NO. _ ILLINOIS FED. AID PROJECT						