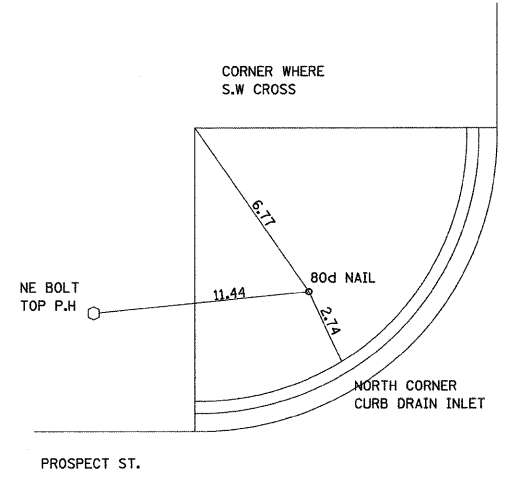


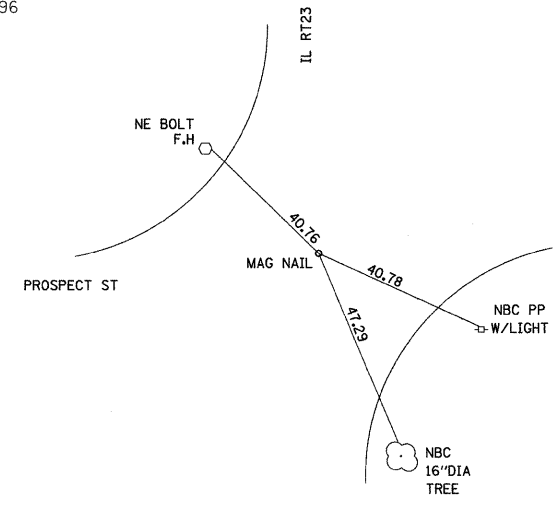
- X - TREE REMOVAL
- A - ADJUST
- AN - ADJUST WITH NEW FRAME & LID
- R - REMOVE
- RM - REMOVE TO MAINTAIN FLOW

BENCHMARK #406:
CHIS "X" TOP NE BOLT F.H. IN
NW QUAD IL 23 & PROSPECT ST.
EL.=885.96

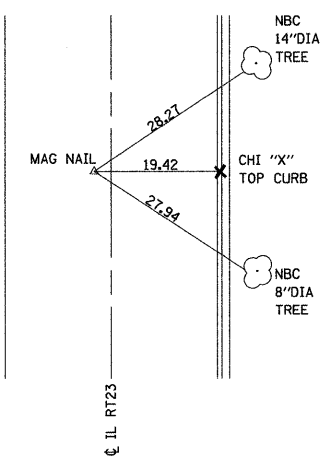
BENCHMARK #405:
CHIS "X" TOP NE BOLT IN NW
QUAD IL 23 & GARDEN ST.
EL.=885.10



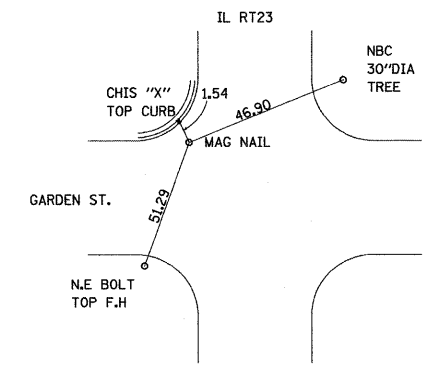
CP 23518 - STA.53+09.43 - 23.1784' RT



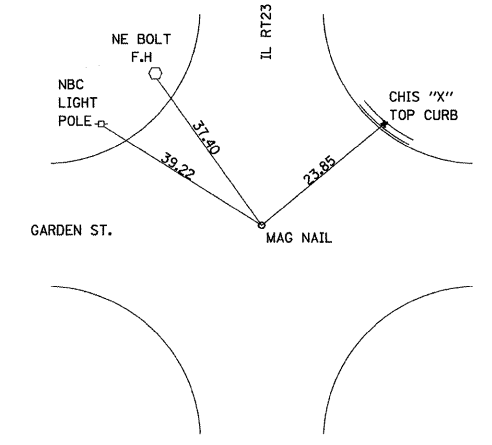
STA. 53+33.21 RT23
110+00.00 PROSPECT



PI STA. 55+55.28



CP 23504 - STA. 57+10.56 -24.8059' LT



STA. 57+29.63 RT23
120+00 GARDEN

FILE NAME = 0366983-SHT-PLAN-52-58.DGN	USER NAME = ---	DESIGNED - DJD	REVISED - ---	STATE OF ILLINOIS DEPARTMENT OF TRANSPORTATION	PLAN - IL 23		F.A.P. RTE. 68	SECTION (28)N, TS & I	COUNTY DEKALB	TOTAL SHEETS 120	SHEET NO. 22
	PLOT SCALE = 1"=20'	CHECKED - DJD	REVISED - ---				CONTRACT NO. 66983				
	PLOT DATE = 01/11	DATE - 01/11	REVISED - ---				ILLINOIS FED. AID PROJECT				