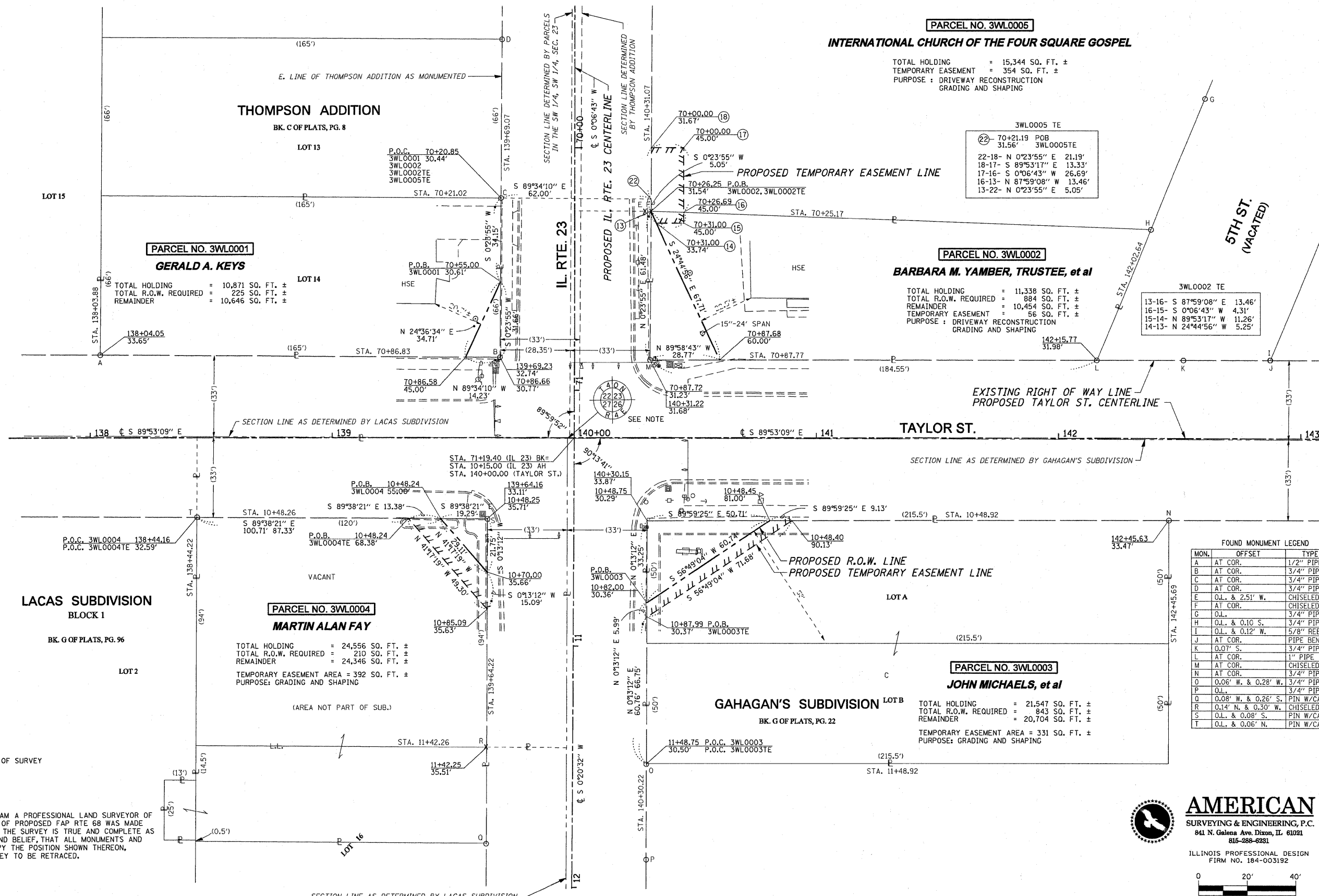


SEC. 22, 23, 26 & 27, T 40 N., R 4 E. OF THE 3RD P.M.



STATE OF ILLINOIS )  
COUNTY OF LEE ) S.S

I, COVENTINE FIDUS, HEREBY CERTIFY THAT I AM A PROFESSIONAL LAND SURVEYOR OF THE STATE OF ILLINOIS, THAT THE SURVEY OF PROPOSED FAP RTE 68 WAS MADE BY ME OR UNDER MY DIRECTION AND THAT THE SURVEY IS TRUE AND COMPLETE AS SHOWN TO THE BEST OF MY KNOWLEDGE AND BELIEF, THAT ALL MONUMENTS AND MARKS ARE OF THE CHARACTER AND OCCUPY THE POSITION SHOWN THEREON, AND ARE SUFFICIENT TO ENABLE THE SURVEY TO BE RETRACED.

DATED THIS 7TH DAY OF SEPTEMBER, 2010

COVENTINE FIDUS - ILLINOIS PROFESSIONAL LAND SURVEYOR NUMBER 35-2169 MY LICENSE EXPIRES 11/30/10

FILE NAME = D366983-shr-rtowplan01.dgn	USER NAME =
PLOT SCALE = 1" = 20'	CHECKED -
PLOT DATE = 9/17/2010	DATE -

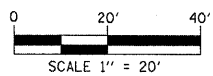
DESIGNED -	REVISED -
DRAWN - CH	REVISED -
CHECKED -	REVISED -
DATE -	REVISED -

STATE OF ILLINOIS  
DEPARTMENT OF TRANSPORTATION

RIGHT OF WAY PLANS

PROJECT	JOB NO. R-93-018-10
SHEET NO. 1 OF 1 SHEETS	STA. 70+00 TO STA. 11+00

F.A.P. RTE.	SECTION	COUNTY	TOTAL SHEET NO.
68	(28)N, TS & I	DE KALB	120 30
IL 23			CONTRACT NO. 66983
FED. ROAD DIST. NO.	ILLINOIS FED. AID PROJECT		



NOTE: SECTION CORNER AS DETERMINED FROM GAHAGAN'S SUBDIVISION & LACAS SUBDIVISION (NOT SET)

NOTE: BEARINGS SHOWN HEREON ARE REFERENCED TO THE ILLINOIS STATE PLANE COORDINATE SYSTEM, EAST ZONE (NAD 83(97)), DISTANCES ARE GROUND