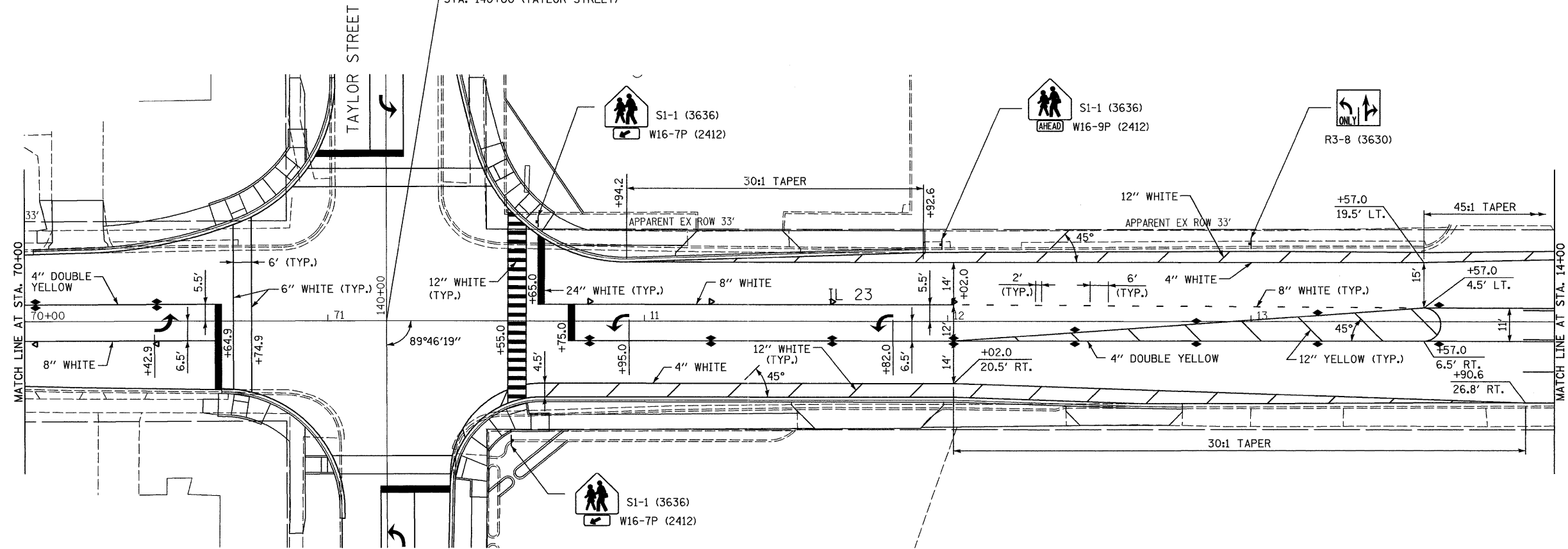
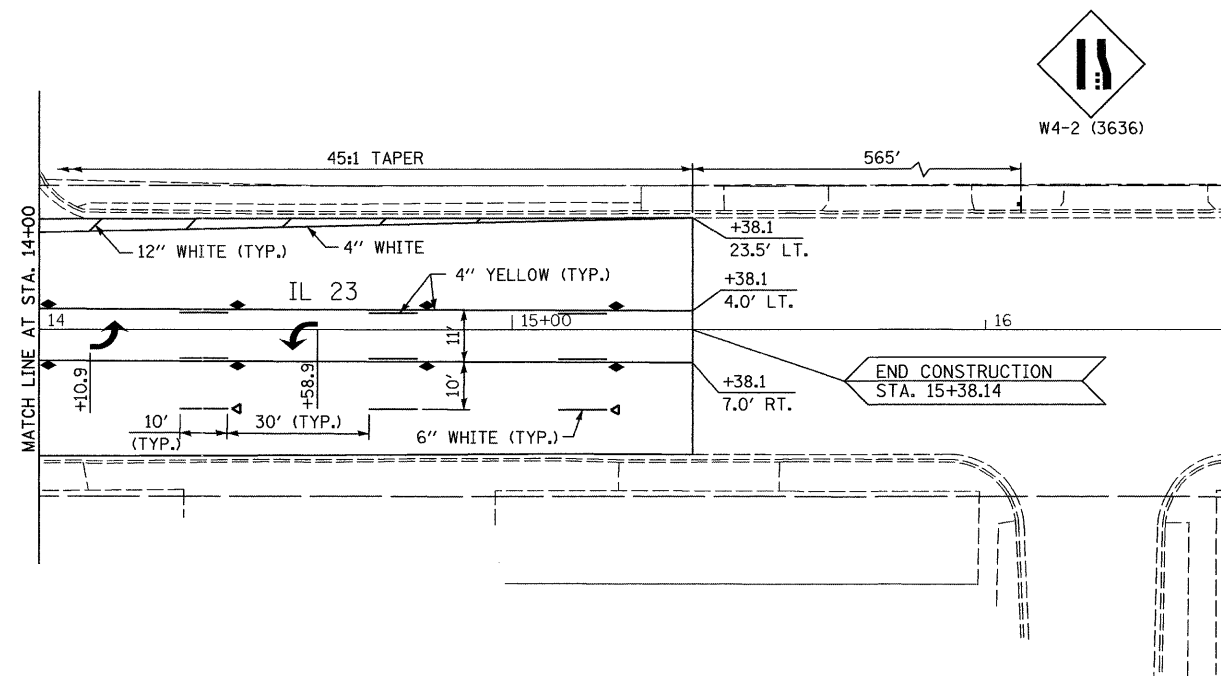


STA. 71+19.40 (IL 23 BK) =
 STA. 10+15.00 (IL 23 AH) =
 STA. 140+00 (TAYLOR STREET)



LEGEND

- ▶ ONE-WAY AMBER MARKER
 - ◀ ONE-WAY CRYSTAL MARKER
 - ◆ TWO-WAY AMBER MARKER
- SEE HIGHWAY STANDARD 781001



FILE NAME = D366983-SHT-PMK-70-16.DGN	USER NAME = ---	DESIGNED - DJD	REVISED - ---	STATE OF ILLINOIS DEPARTMENT OF TRANSPORTATION	PAVEMENT MARKING & SIGNING - IL 23	F.A.P. RTE. 68	SECTION (28)N, TS & I	COUNTY DEKALB	TOTAL SHEETS 120	SHEET NO. 41
	PLOT SCALE = 1"=20'	CHECKED - DJD	REVISED - ---			SCALE: 1"=20'	SHEET NO. ___ OF ___ SHEETS	STA. 70+00 TO STA. 16+00	CONTRACT NO. 66983	
PLOT DATE = 01/11	DATE - 01/11	REVISED - ---	REVISED - ---	FED. ROAD DIST. NO. - ILLINOIS FED. AID PROJECT						