
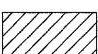
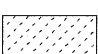
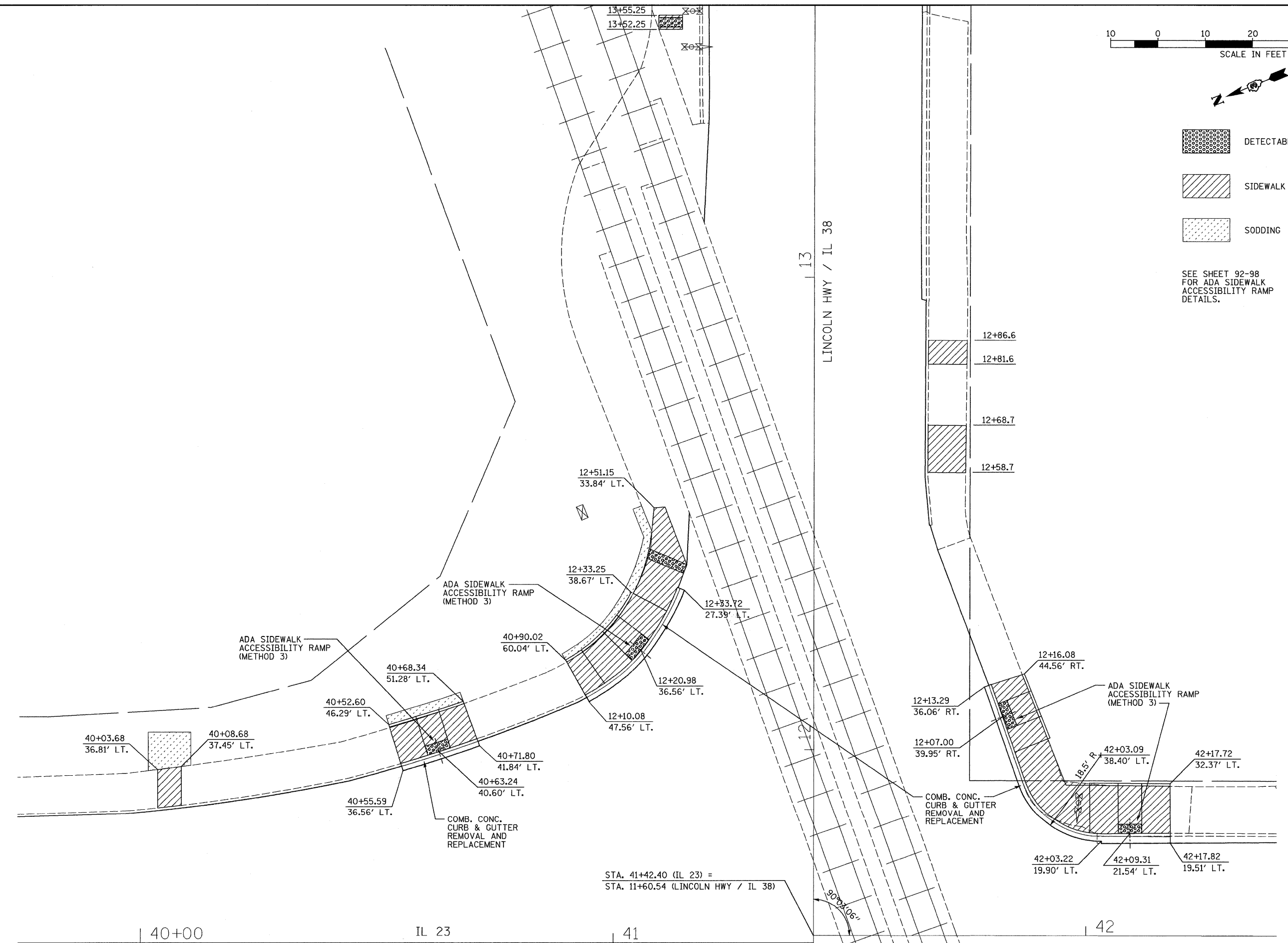


-  DETECTABLE WARNING
-  SIDEWALK REMOVAL
-  SODDING

SEE SHEET 92-98
FOR ADA SIDEWALK
ACCESSIBILITY RAMP
DETAILS.



STA. 41+42.40 (IL 23) =
STA. 11+60.54 (LINCOLN HWY / IL 38)

FILE NAME = D366983-SHT-INTERSEC.DGN

USER NAME = ---
PLOT SCALE = 1"=20'
PLOT DATE = 01/11

DESIGNED - DJD
DRAWN - NV
CHECKED - DJD
DATE - 01/11

REVISED - ---
REVISED - ---
REVISED - ---
REVISED - ---

**STATE OF ILLINOIS
DEPARTMENT OF TRANSPORTATION**

INTERSECTION DETAIL LINCOLN HIGHWAY /IL 38	
SCALE: 1"=20'	SHEET NO. ___ OF ___ SHEETS
STA. _____	TO STA. _____

F.A.P. RTE. 68	SECTION (28)N, TS & I	COUNTY DEKALB	TOTAL SHEETS 120	SHEET NO. 51
CONTRACT NO. 66983				
FED. ROAD DIST. NO. _ ILLINOIS FED. AID PROJECT				