

DETECTOR LOOP INDUCTANCE CHART						
DETECTOR LOOP SYSTEM	Ø	LOCATION	TURNS PER LOOP	INDUCTANCE READING (MICROHENRIES)	FREQUENCY (HERTZ)	J PIN STATUS
A	6	SB FAR	5	264	37566	ON
B	6	SB THRU	4	292	35685	OFF
C	1	SB LT	4	472	28063	ON
D	1	SB LT	4	457	28525	ON
E	8	WB THRU	4	278	36549	ON
F	3	WB LT	4	816	21350	ON
G	2	NB FAR	6	353	32474	ON
H	2	NB THRU	4	297	35367	OFF
I	5	NB LT	4	480	27831	ON
J	5	NB LT	4	467	28215	ON
K	4	EB THRU	4	314	34401	ON
L	7	EB LT	4	868	20697	ON

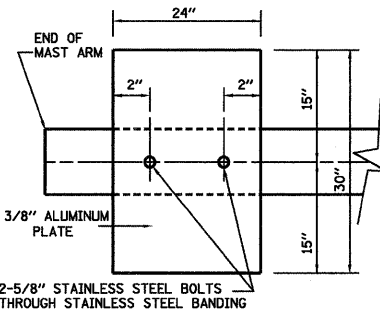
J PIN STATUS: "ON" MEANS STANDARD DETECTOR SETUP. "OFF" MEANS J WIRE HAS BEEN DISCONNECTED. BUT INTACT, AT THE HARNESS PANEL WITH THE NECESSARY

ELECTRICAL LOAD FOR INTERSECTION				
STREET NAME	COMPONENT	NUMBER	WATTAGE EACH	BURNTIME %
FOURTH STREET (IL 23)	RED	6	10	54
	YELLOW	6	22	4
	GREEN	6	12	42
	YELLOW ARROW LT.	4	9	5
	GREEN ARROW LT.	4	3.4	21
	88	4	6	100
	88	4	5	13
TAYLOR STREET	RED	6	10	70
	YELLOW	6	22	4
	GREEN	6	12	26
	YELLOW ARROW LT.	4	9	4
	GREEN ARROW LT.	4	3.4	16
	88	4	6	100
	88	4	5	13
TRAFFIC SIGNAL CABINET	CONTROLLER	1	6	100
	UPS	1	50	100
	EMERGENCY VEHICLE PREEMPT	4	--	--
LIGHTING	LUMINAIRE	4	250	50

AGENCY RESPONSIBLE FOR TRAFFIC SIGNAL ENERGY CHARGES:
CITY OF DEKALB

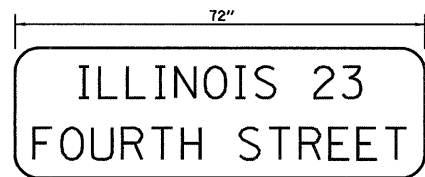
NOTE:

DAMPENING DEVICE SHALL CONSIST OF A 24" X 30" TYPE 1, UNPAINTED ALUMINUM SIGN STOCK MOUNTED HORIZONTALLY ON TOP OF MAST ARM WITH THE 30" LENGTH PERPENDICULAR TO THE ARM. COST OF THE DAMPENING DEVICE IS INCLUDED IN THE MAST ARM PAY ITEM.



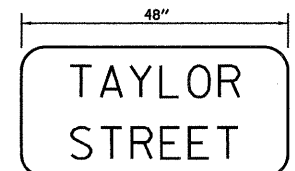
2-5/8" STAINLESS STEEL BOLTS THROUGH STAINLESS STEEL BANDING
NOTE: MOUNT DAMPENING PLATE TO END OF EACH TRAFFIC SIGNAL MAST ARM.

DAMPENING PLATE DETAIL - TOP VIEW



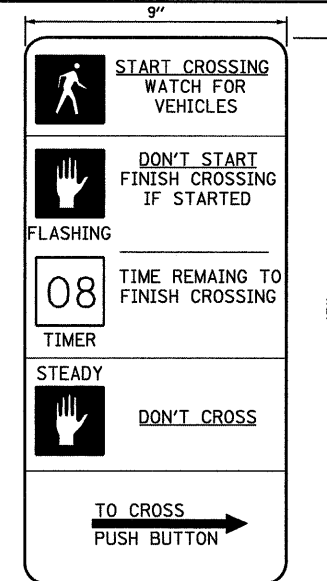
TYPE ZZ SHEETING REQUIRED
6" D SERIES LETTERS (CITY STREET LETTERING)
8" D SERIES LETTERS (STATE ROUTE LETTERING)
2 SIGNS REQUIRED = 15.0 SQ. FT. EACH
= 30.0 SQ. FT. TOTAL

THIS STREET NAME SIGN SHALL BE PLACED ON THE MAST ARMS PARALLEL WITH FOURTH STREET (IL 23)

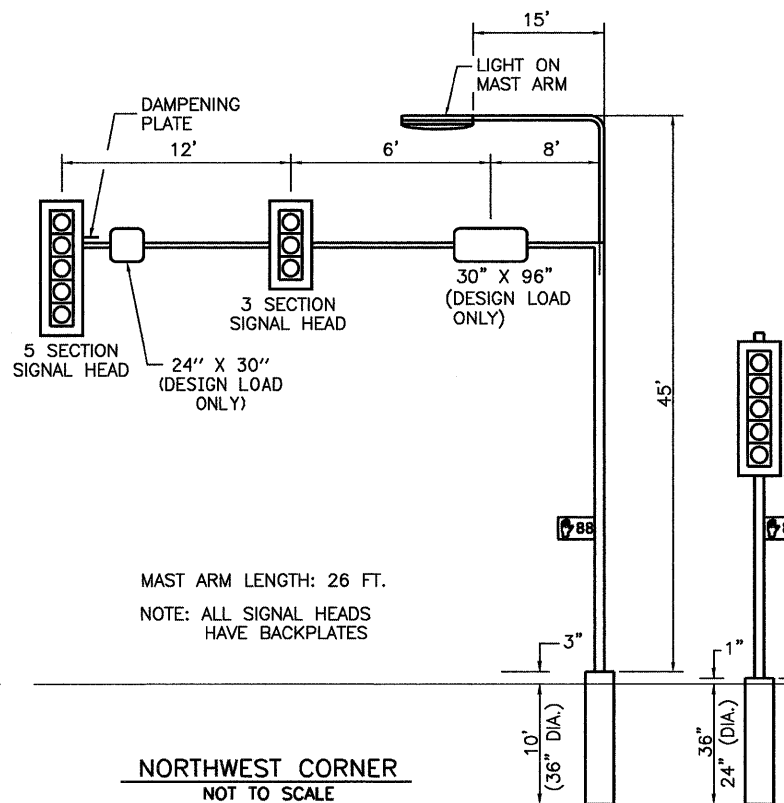
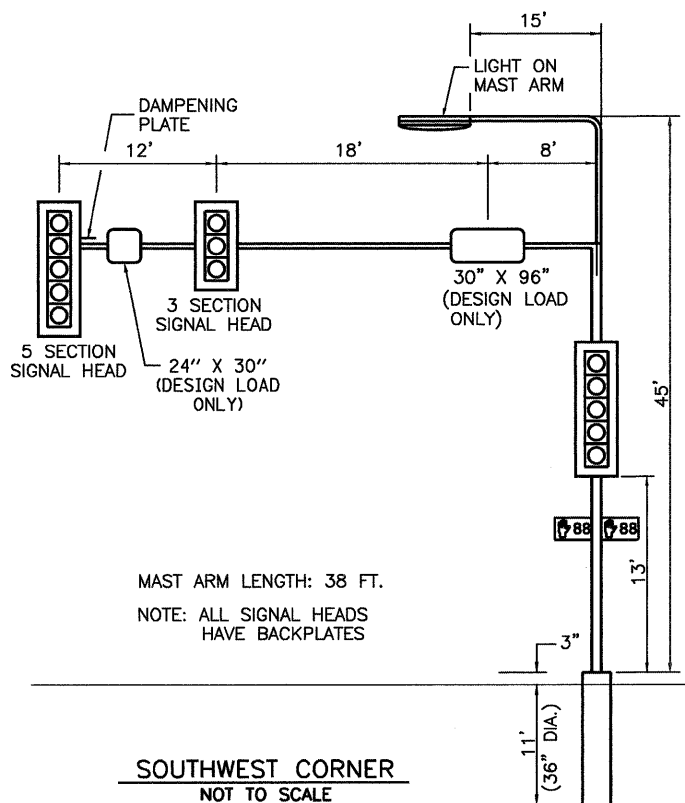
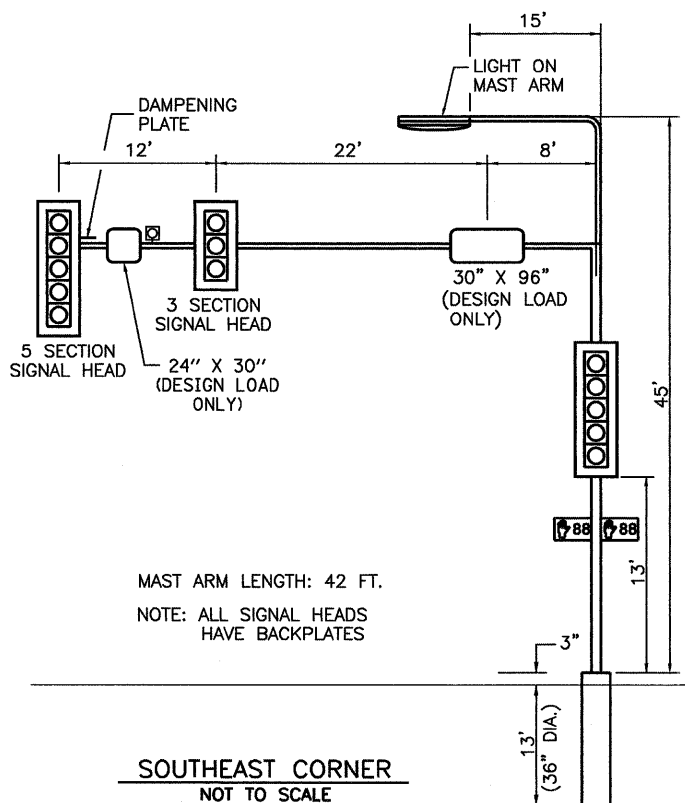
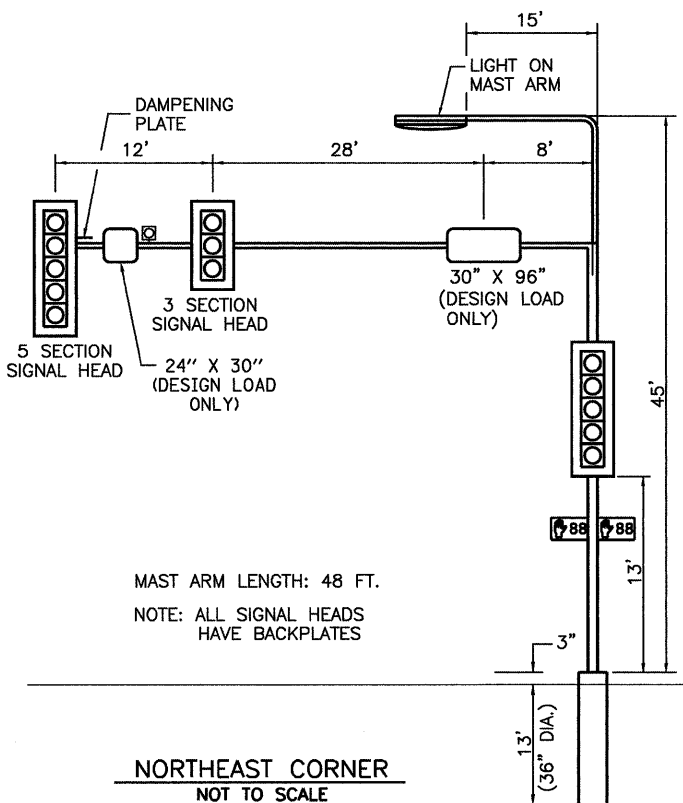


TYPE ZZ SHEETING REQUIRED
8" D SERIES LETTERS
2 SIGNS REQUIRED = 10.0 SQ. FT. EACH
= 20.0 SQ. FT. TOTAL

THIS STREET NAME SIGN SHALL BE PLACED ON THE MAST ARMS PARALLEL WITH LINCOLN HIGHWAY (IL 38)



R10-3E
THE CONTRACTOR SHALL SUPPLY AND MOUNT ONE SIGN WITH EACH PEDESTRIAN PUSH-BUTTON AND THIS SHALL BE INCLUDED IN THE COST OF PEDESTRIAN PUSH-BUTTON PAY ITEM.



FILE NAME = 0366983-SHT-TS-DETAILS-TAYLOR.DGN

USER NAME = --

DESIGNED - DJD

REVISED - ---

DRAWN - ARR

REVISED - ---

PLOT SCALE = 1" = 20'

CHECKED - DJD

REVISED - ---

PLOT DATE = 01/11

DATE - 01/11

REVISED - ---

STATE OF ILLINOIS
DEPARTMENT OF TRANSPORTATION

TRAFFIC SIGNAL DETAILS
FAP 68 (IL 23)/FOURTH STREET AND TAYLOR STREET

SCALE: 1" = 20' SHEET NO. ___ OF ___ SHEETS STA. _____ TO STA. _____

F.A.P. RTE.	SECTION	COUNTY	TOTAL SHEETS	SHEET NO.
68	(28)N, TS & I	DEKALB	120	80
CONTRACT NO. 66983				

ILLINOIS FED. AID PROJECT