



OVERALL PLAN

M.L. = MATCH LINE

SCHEDULE OF QUANTITIES

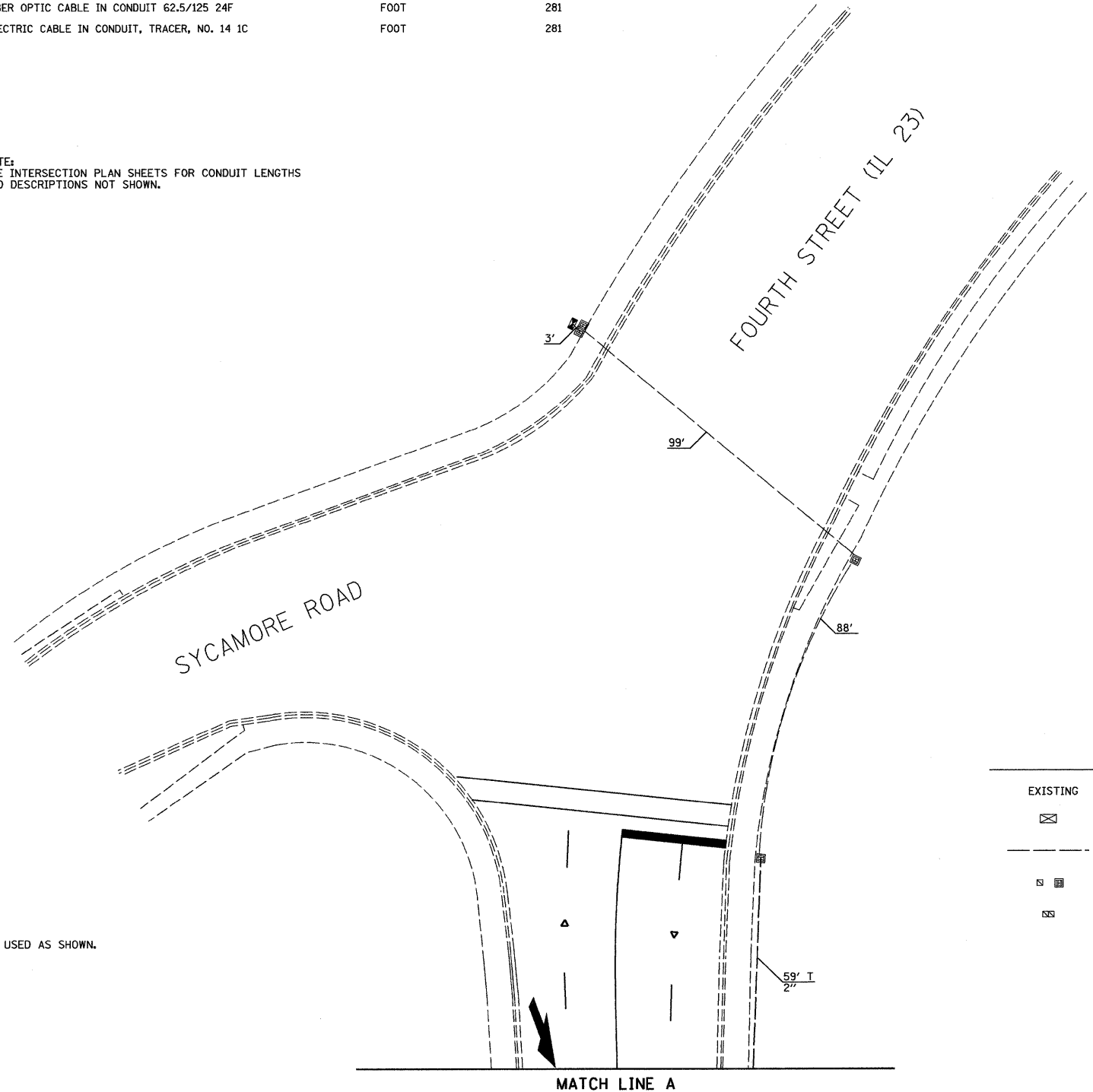
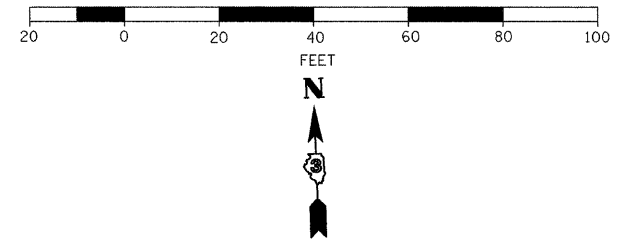
ITEM NO.	DESCRIPTION	UNIT	TOTAL QUANTITY
81012600	CONDUIT IN TRENCH, 2" DIA., PVC	FOOT	59
81900200	TRENCH AND BACKFILL FOR ELECTRICAL WORK	FOOT	59
86400100	TRANSCEIVER-FIBER OPTIC	EACH	1
87100160	FIBER OPTIC CABLE IN CONDUIT 62.5/125 24F	FOOT	281
*3002213	ELECTRIC CABLE IN CONDUIT, TRACER, NO. 14 1C	FOOT	281

NOTE:  
SEE INTERSECTION PLAN SHEETS FOR CONDUIT LENGTHS  
AND DESCRIPTIONS NOT SHOWN.

CONSTRUCTION NOTES:

1. NEW AND EXISTING HANDHOLES SHALL BE USED AS SHOWN.

GRAPHIC SCALE



TRAFFIC SIGNALS LEGEND

EXISTING	PROPOSED	
		CONTROLLER CABINET
		CONDUIT
		HANDHOLE
		DOUBLE HANDHOLE

FILE NAME = 0366983-SHT-TS-INTERCONNECT.DGN

USER NAME = --  
DESIGNED - DJD  
DRAWN - ARR  
CHECKED - DJD  
PLOT SCALE = 1" = 20'  
PLOT DATE = 01/11

REVISOR - ---  
REVISION - ---  
REVISION - ---  
REVISION - ---  
DATE - 01/11

STATE OF ILLINOIS  
DEPARTMENT OF TRANSPORTATION

TRAFFIC SIGNAL INTERCONNECT PLAN  
FAP 68 (IL 23)/FOURTH STREET

SCALE: 1" = 20' SHEET NO. \_\_\_ OF \_\_\_ SHEETS STA. \_\_\_\_\_ TO STA. \_\_\_\_\_

F.A.P. RTE.	SECTION	COUNTY	TOTAL SHEETS	SHEET NO.
68	(28)N, TS & I	DEKALB	120	82
CONTRACT NO. 66983			ILLINOIS FED. AID PROJECT	