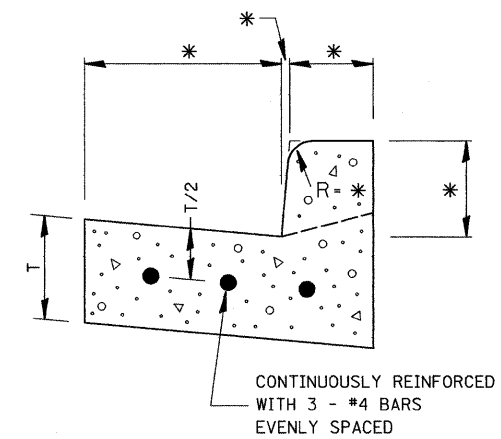


NOTE:
 WHEN MILLING OPERATIONS PRODUCE A ROUNDED EDGE,
 THEN A SAW CUT SHALL BE USED TO MANUFACTURE
 A PERPENDICULAR EDGE AS SHOWN IN THE DETAIL.
 THE ENGINEER SHALL BE THE SOLE JUDGE
 CONCERNING THE USE OF THIS DETAIL.

HMA DETAIL AT BUTT JOINTS

406-8

* VARIES - SEE STANDARD 606001



REINFORCEMENT SHALL NOT BE PAID FOR
 SEPARATELY BUT WILL BE INCLUDED IN THE
 CONTRACT UNIT PRICE FOR CC&G.

**REINFORCEMENT DETAIL
 FOR
 COMBINATION CONCRETE
 CURB AND GUTTER**

606-4

| | | | | | | | | | | | |
|--|-----------------|-----------------------------|---------------|---|----------------|---|--------------------------|------------------|------------------------|--------------------|--|
| FILE NAME = 0366983-SHT-DETAILS.DGN | USER NAME = --- | DESIGNED - --- | REVISED - --- | STATE OF ILLINOIS DEPARTMENT OF TRANSPORTATION | DETAILS | F.A.P. RTE. 68 | SECTION (28)N, TS & I | COUNTY DEKALB | TOTAL SHEETS 120 | SHEET NO. 99 | |
| PLOT SCALE = NONE | CHECKED - DJD | REVISED - --- | REVISED - --- | | | CONTRACT NO. 66983 | | | | | |
| PLOT DATE = 01/11 | DATE - 01/11 | REVISED - --- | REVISED - --- | | | FED. ROAD DIST. NO. _ ILLINOIS FED. AID PROJECT | | | | | |
| SCALE: NONE | | SHEET NO. ___ OF ___ SHEETS | | | | STA. _____ TO STA. _____ | | | | | |