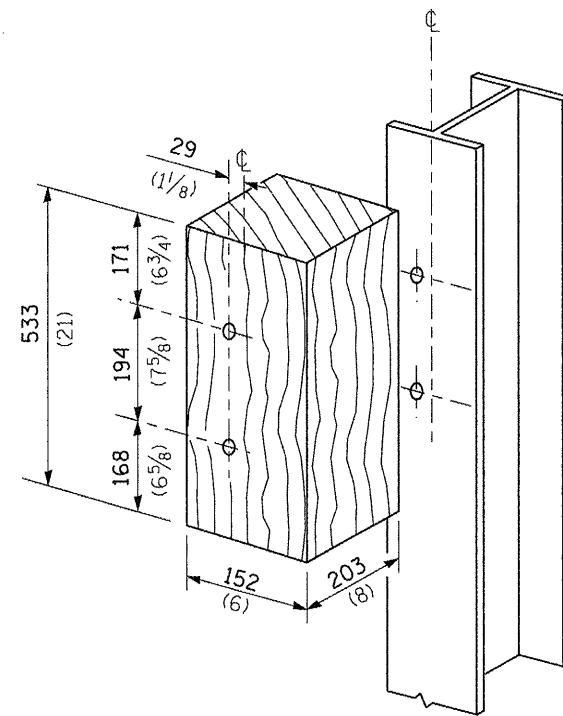
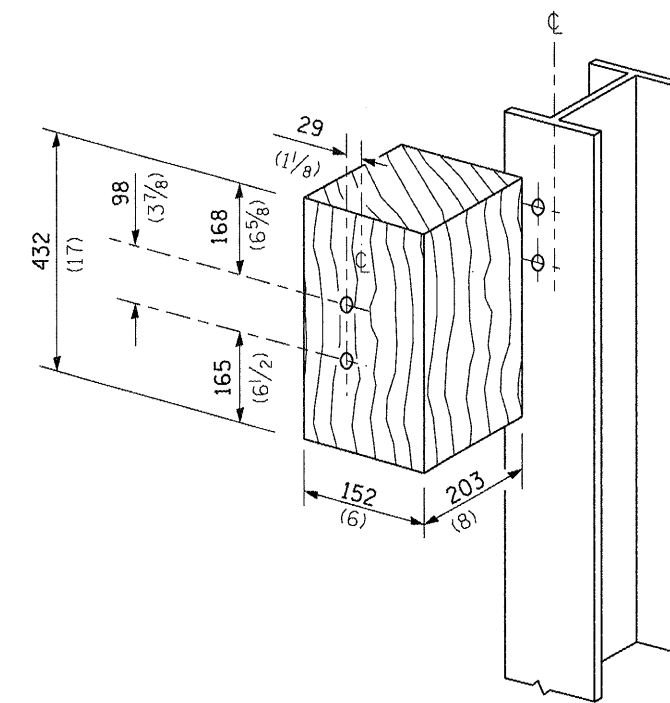


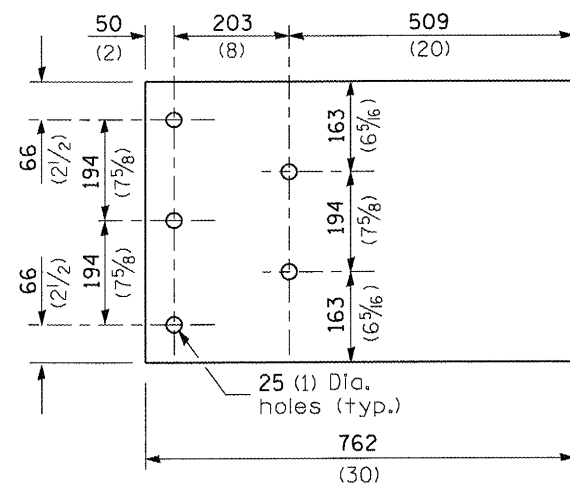
THRIE BEAM END SHOE DETAIL



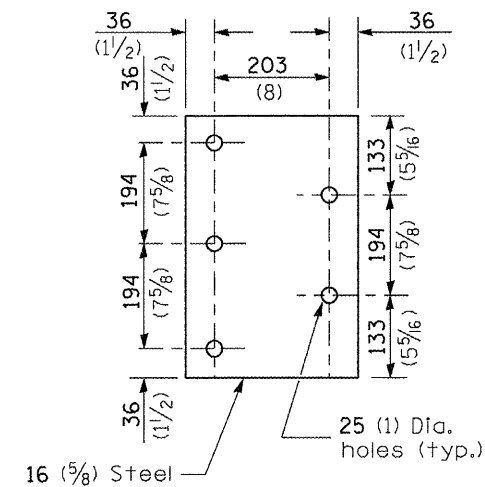
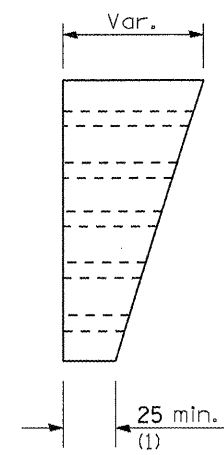
POSTS 1-11 WOOD BLOCKOUT DETAIL



POST 12 WOOD BLOCKOUT DETAIL



PARAPET WOOD BLOCK-OUT DETAIL



PARAPET STEEL BEARING PLATE DETAIL

(5 each individual 125x125x16 (5x5x5/8) steel plates with centered 25 (1) holes may be substituted for the plate shown.)

| | | | | | | | | | | |
|--|------------------------------------|------------|-----------|---|---|----------------|-----------|-----------|--------------------|-----------|
| FILE NAME = | USER NAME = Sperksgr | DESIGNED - | REVISED - | STATE OF ILLINOIS DEPARTMENT OF TRANSPORTATION | PRE-MGS HIGHWAY STANDARD 631031-05 TRAFFIC BARRIER TERMINAL, TYPE 6 EFFECTIVE 4-1-06 | F.A. RTE. | SECTION | COUNTY | TOTAL SHEETS | SHEET NO. |
| ct:\pw_work\p\sidot\sparksgr\d0262291\067239-shr-287-631031-05-TrafBar-TermType6.dgn | PLOT SCALE = 0:26.000 ms / in. | DRAWN - | REVISED - | | | VAR | * | VAR | 18 | 17 |
| | PLOT DATE = Apr-01-2011 09:44:15AM | CHECKED - | REVISED - | | | (SHEET 3 OF 3) | | | CONTRACT NO. 72E39 | |
| | | DATE - | REVISED - | | | SCALE: | SHEET NO. | OF SHEETS | STA. | TO STA. |