

F.A.P. RTE.	SECTION	COUNTY	TOTAL SHEETS	SHEET NO.
785	137-1BR	MADISON	21	1
FED. ROAD DIST. NO. 8		ILLINOIS	CONTRACT NO. 76390	

STATE OF ILLINOIS  
DEPARTMENT OF TRANSPORTATION  
DIVISION OF HIGHWAYS

**PROPOSED  
HIGHWAY PLANS**

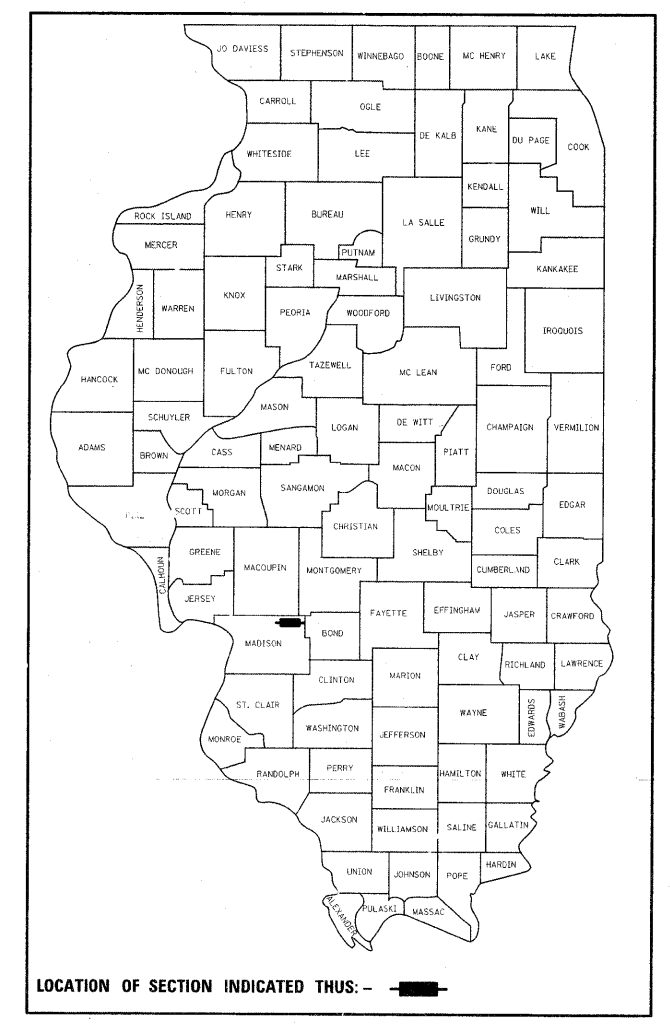
FAP ROUTE 785 (IL 140)  
SECTION 137-1BR

MADISON COUNTY

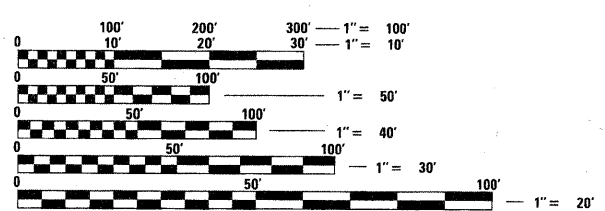
**CULVERT REPLACEMENT OF EXISTING CULVERT  
OVER EAST FORK SILVER CREEK  
C-98-078-11**

FOR INDEX OF SHEETS, SEE SHEET NO. 2

D-98-120-00

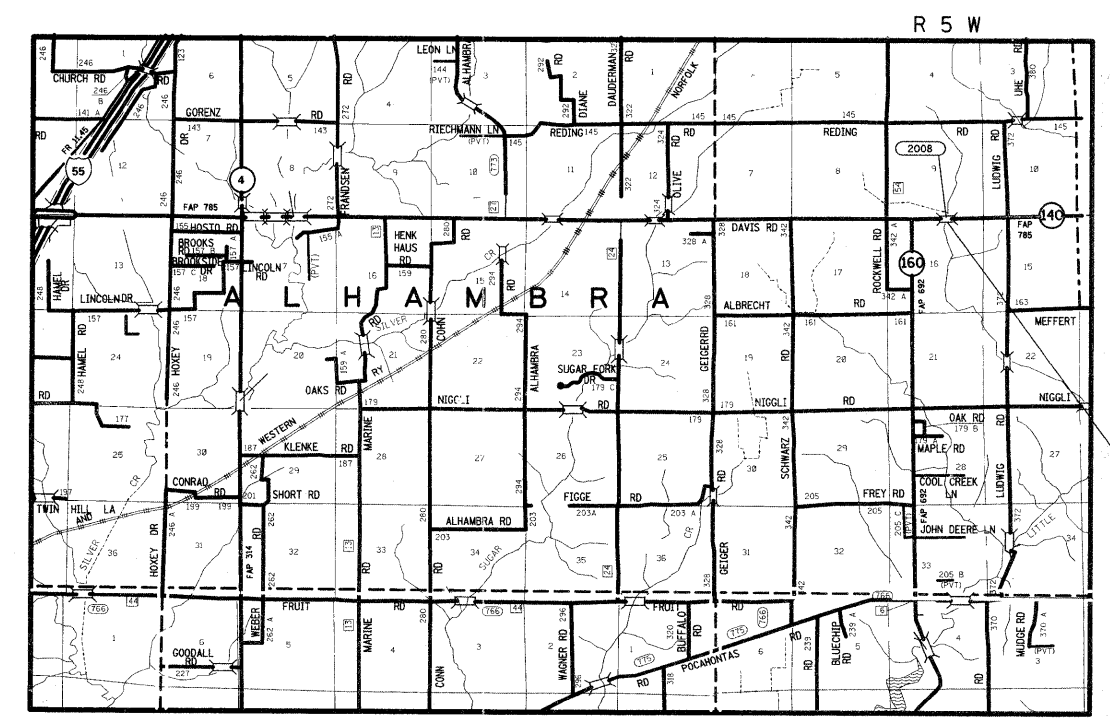


LOCATION OF SECTION INDICATED THUS: -



FULL SIZE PLANS HAVE BEEN PREPARED USING STANDARD ENGINEERING SCALES. REDUCED SIZED PLANS WILL NOT CONFORM TO STANDARD SCALES. IN MAKING MEASUREMENTS ON REDUCED PLANS, THE ABOVE SCALES MAY BE USED.

J.U.L.I.E.  
JOINT UTILITY LOCATION INFORMATION FOR EXCAVATION  
1-800-892-0123  
OR 811

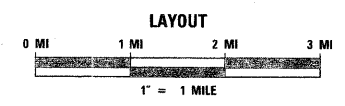


STA 1369+02.00  
EX. SN 060-2008  
PR. SN 060-2047

PROJECT ENGINEER PATTI LEBEAU - (618) 346-3179  
PROJECT MANAGER ART MUEHLFELD - (618) 346-3209

CONTRACT NO. 76390

ADT  
1650(2011)/2000(2031)  
SU%: 7.8 MU%: 5.0



LATITUDE = 39.1060  
LONGITUDE = 90.5582

GROSS LENGTH = 26.3 FEET = .005 MILES  
NET LENGTH = .005 MILES

STATE OF ILLINOIS  
DEPARTMENT OF TRANSPORTATION  
DIVISION OF HIGHWAYS

SUBMITTED July 7 20 11  
*Maria C. Jamel*  
DEPUTY DIRECTOR OF HIGHWAYS, REGION 5 ENGINEER

August 19 20 11  
*Scott E. Stitt, P.E.*  
acting ENGINEER OF DESIGN AND ENVIRONMENT

August 19 20 11  
*Christine M. Reed*  
DIRECTOR OF HIGHWAYS, CHIEF ENGINEER

**PRINTED BY THE AUTHORITY  
OF THE STATE OF ILLINOIS**