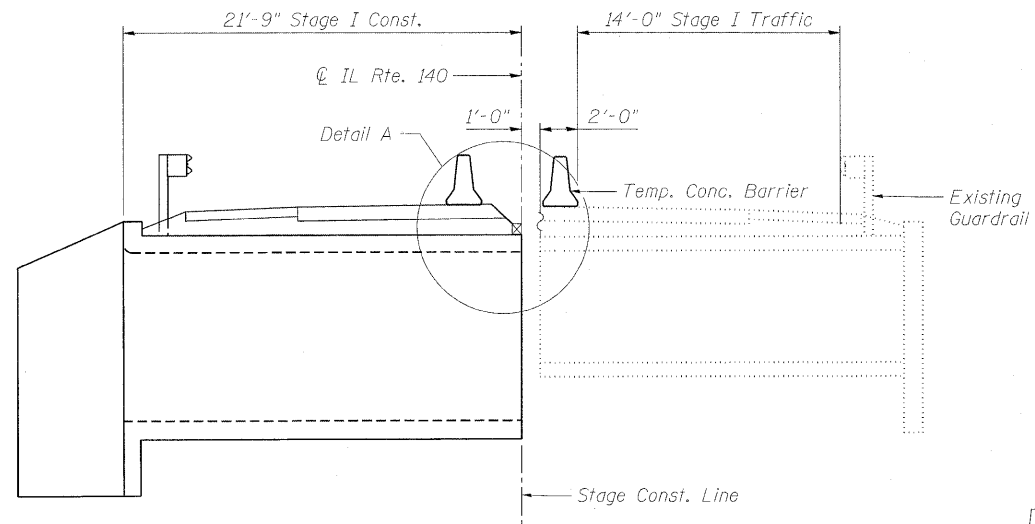
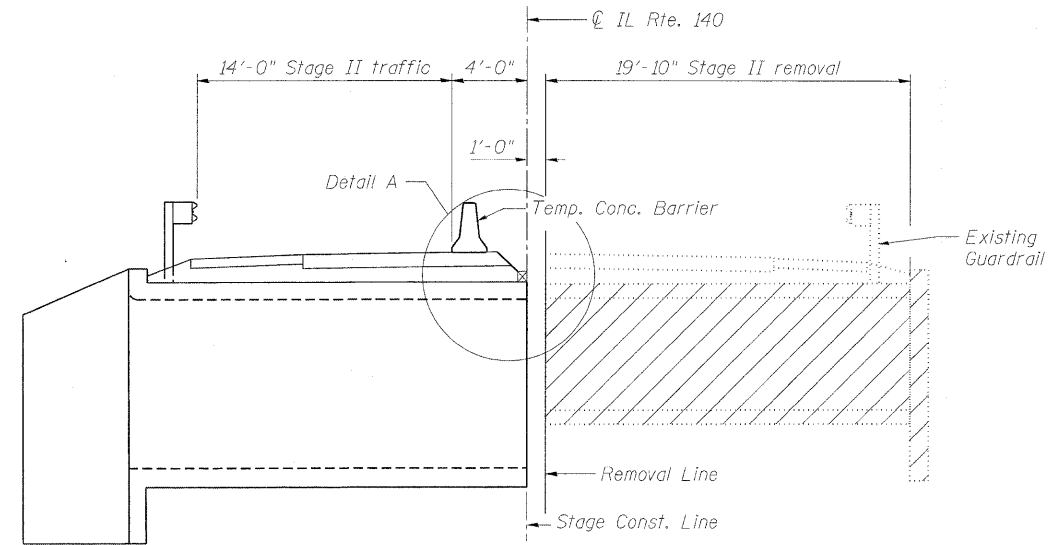


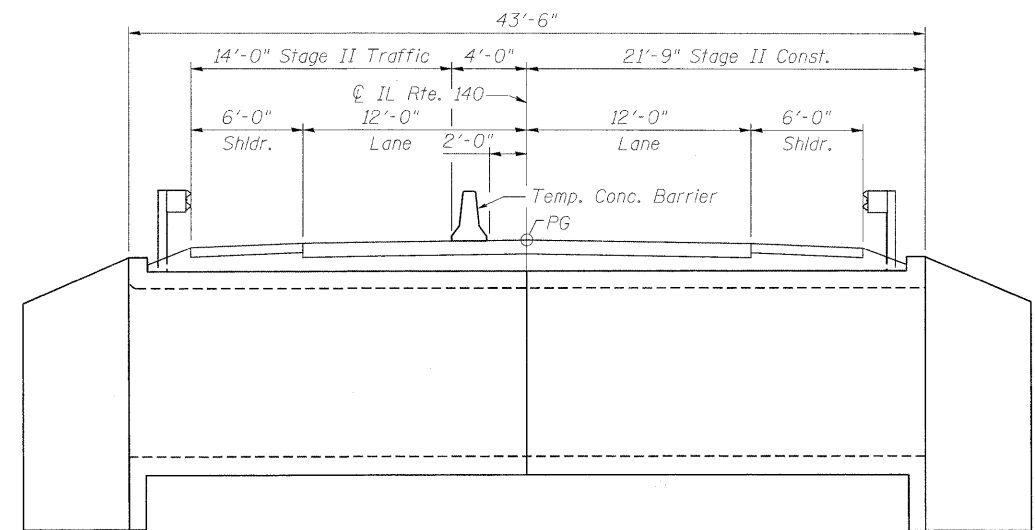
STAGE I REMOVAL



STAGE I CONSTRUCTION



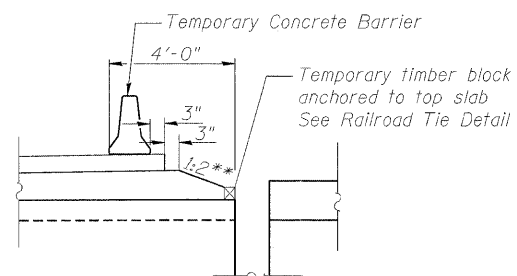
STAGE II REMOVAL



STAGE II CONSTRUCTION

NOTES

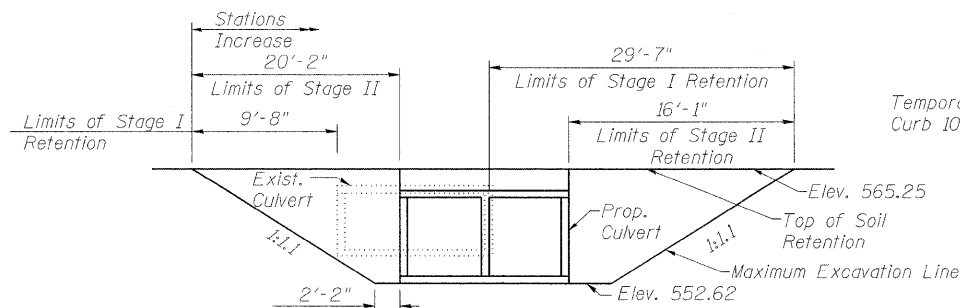
1. All staging cross sections are looking East.
2. Removal of the guardrail, bituminous wearing surface and fill above the culvert is included in "Removal of Existing Structures".
3. A cantilevered sheet piling design does not appear feasible and additional members or other retention systems may be necessary. The Contractor shall submit a temporary soil retention system design including plan details and calculations for review and acceptance by the Engineer.
4. For Details of Temporary Concrete Barrier, see sheet 3 of 7.
5. For quantity of Temporary Concrete Barrier, see roadway plans.



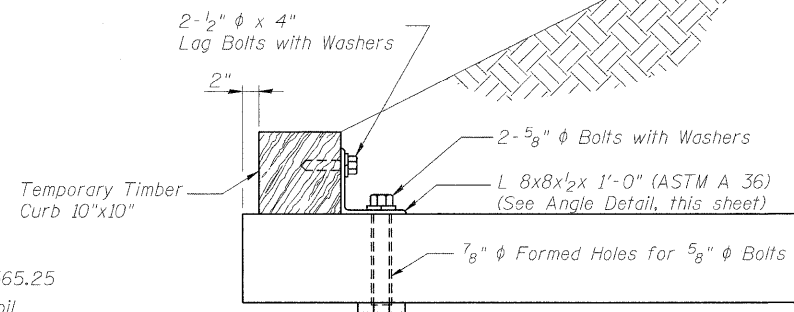
DETAIL A
**(V:H)

LEGEND

Removal of Existing Structures

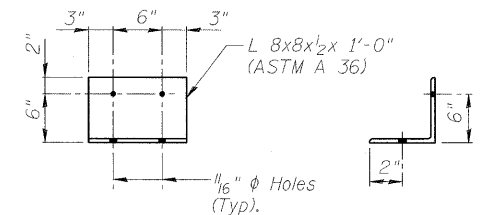


TEMPORARY SOIL RETENTION SYSTEM
Along \bar{C} of Rdwy.



RAILROAD TIE DETAIL

The L 8x8x1/2 x 1'-0" and Temporary Timber shall not be removed until Stage II Construction has been completed. Connect one (1) L 8x8x1/2 x 1'-0" to the top of Stage I culvert with two (2) bolts placed in two (2) holes. Angles to be positioned near each end of all timber curbs, but the outside lag bolt shall be at least 6" from end of timber. Cost included with Concrete Box Culverts.



ANGLE DETAIL



1475 East Woodfield Road, Suite 600
Schaumburg, IL 60173
Phone: (847) 605-9600
Fax: (847) 605-9610

FILE NAME = 0602047-76390-002-Staging.dwg	USER NAME = jmtobertge
PLOT SCALE =	PLOT DATE = 7/7/2011

DESIGNED - JMT	REVISIONS -
CHECKED - SDG	REVISIONS -
DRAWN - AJP	REVISIONS -
CHECKED - SDG	REVISIONS -

STATE OF ILLINOIS
DEPARTMENT OF TRANSPORTATION

CONSTRUCTION STAGING
STRUCTURE NO. 060-2047

SHEET NO. 2 OF 7 SHEETS

F.A.P. RTE.	SECTION	COUNTY	TOTAL SHEETS	SHEET NO.
785	137-1BR	MADISON	21	15
CONTRACT NO. 76390			ILLINOIS FED. AID PROJECT	