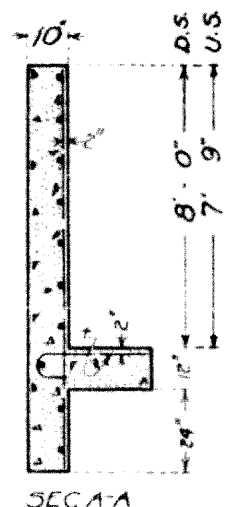
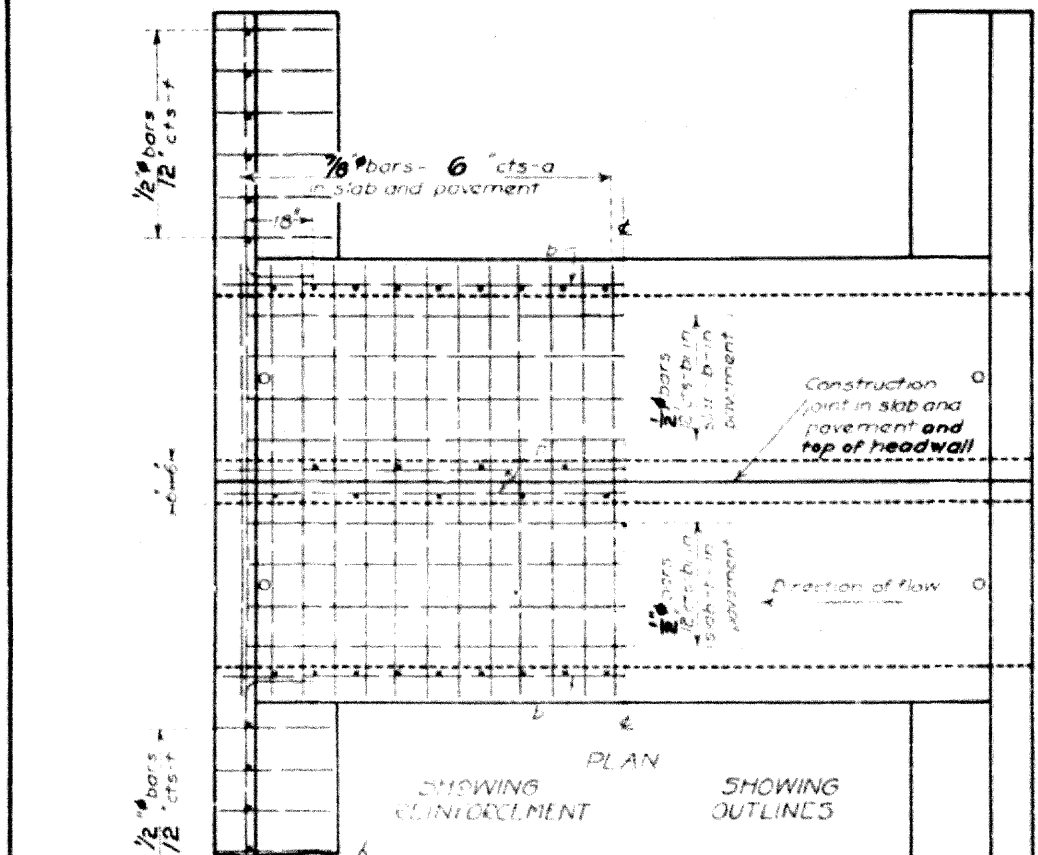
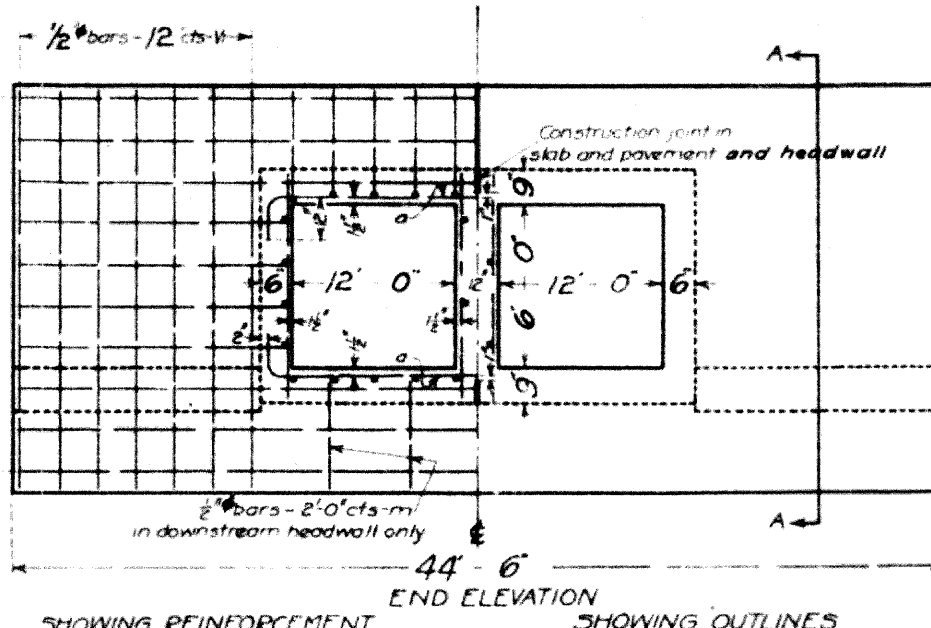
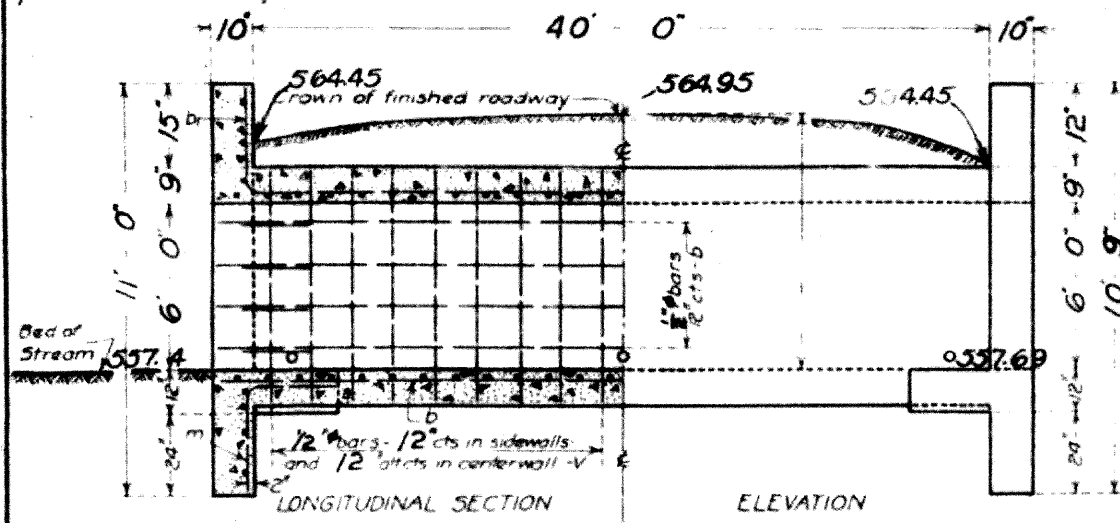


Adjust height of headwalls to be 12" above shoulder elevation.
Build tops of headwalls parallel to grade line.

STATE OF ILLINOIS
DEPARTMENT OF PUBLIC WORKS & BUILDINGS
DIVISION OF HIGHWAYS
R.C. DOUBLE BOX CULVERT

BOND ISSUE ROUTE NO.	SEC.	COUNTY	TOTAL SHEETS	SHEET NO.
160	F137	Madison-Bond	52	46
FED. ROAD DIST. NO. 7 ILLINOIS			FED. AID PROJECT 15C	



BILL OF MATERIAL

BARS	NO	SIZE	LENGTH
v	120	1/2"	7'-3"
vi	40	1/2"	10'-6"
h	12	1/2"	23'-0"
hi	8	1/2"	22'-0"
h2	24	1/2"	11'-0"
a	168	1/8"	27'-9"
b	82	1/2"	21'-6"
or	52	1/2"	22'-6"
t	40	1/2"	4'-0"
m	12	1/2"	5'-0"
Reinforcing Steel-Lbs			12960
Concrete-Cu Yds			100.2

Class X Concrete to be used throughout

S.B.I Route 160 Const. Sec. 137
Madison-Bond Co.
Sta. 1369+03

COMPUTED - M. Mahan
CHECKED - J. J. Bunch
DRAWN - J. J. Bunch
CHECKED - J. J. Bunch
ASSEMBLED - C. G. Lambert
CHECKED - H. L. King
EXAMINED May 12, 1930
APPROVED - J. J. Bunch
SUPERVISOR OF HIGHWAYS