

F.A.P. RTE.	SECTION	COUNTY	TOTAL SHEETS	SHEET NO.
690	481B	CLINTON	46	1
FED. ROAD DIST. NO. -		ILLINOIS	CONTRACT NO. 76C21	

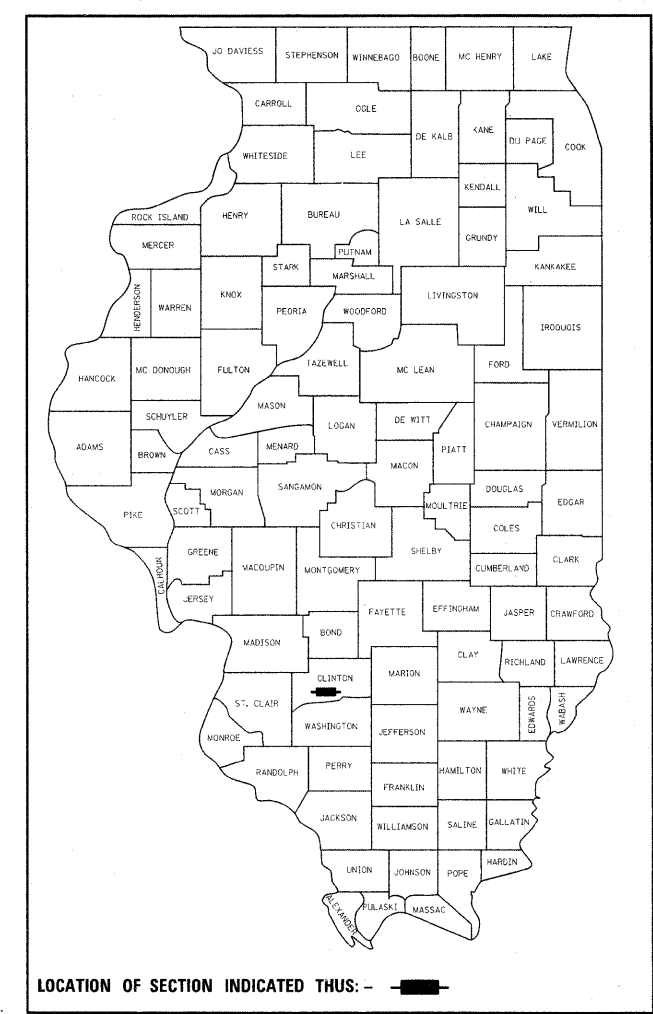
STATE OF ILLINOIS
DEPARTMENT OF TRANSPORTATION
DIVISION OF HIGHWAYS

PROPOSED
HIGHWAY PLANS

FAP ROUTE 690 (IL 160)
SECTION 481B
PROJECT NO. ACBRF-0690(010)
STRUCTURE REPLACEMENT
OVER BRANCH LAKE CREEK
CLINTON COUNTY
C-98-093-08

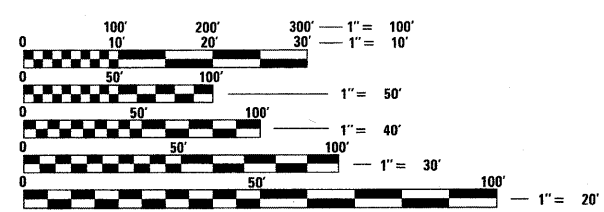
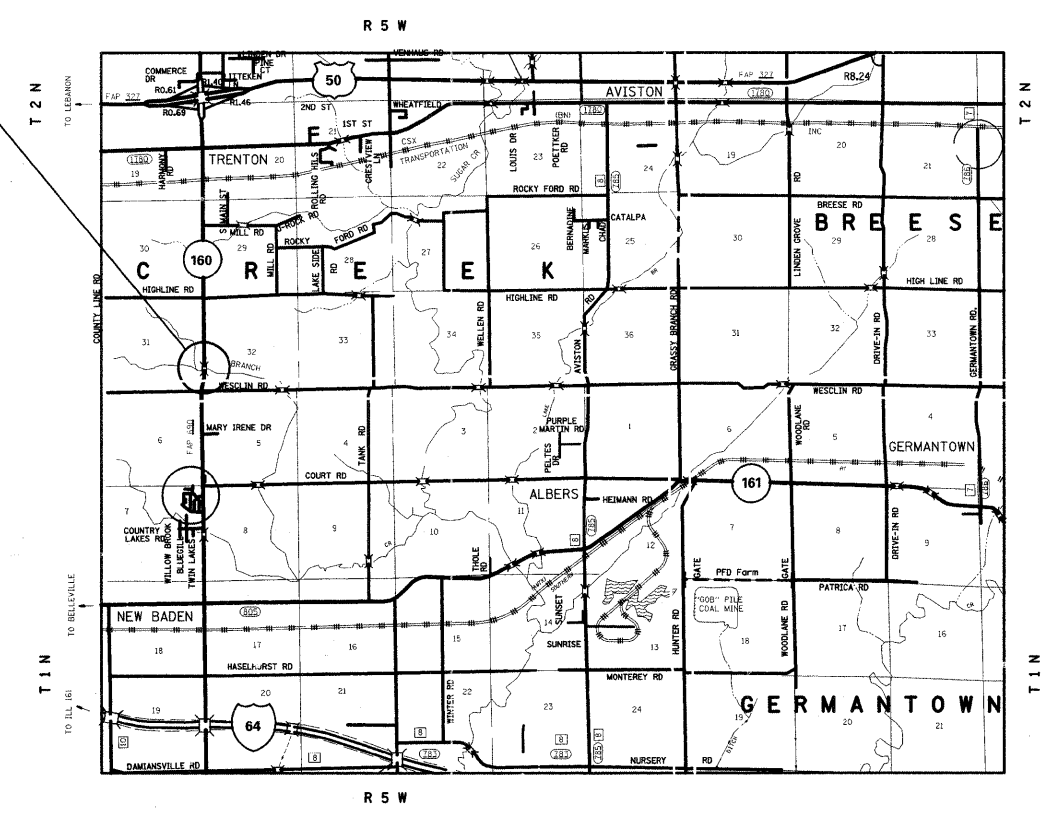
FOR INDEX OF SHEETS, SEE SHEET NO. 2

D-98-101-08



1-SPAN CONCRETE BRIDGE
TO BE REPLACED WITH A
1-SPAN I-BEAM STRUCTURE
OVER BRANCH LAKE CREEK
SN 014-0026(E) 0079(P)
STA 623+16.00
77'-0" BK TO BK OF ABUTMENTS

RESURFACING:
FROM STA 621+25.00 TO STA 622+41.50
FROM STA 623+90.30 TO STA 625+00.00

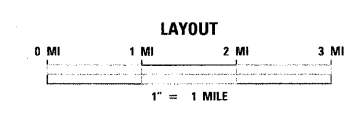


FULL SIZE PLANS HAVE BEEN PREPARED USING STANDARD ENGINEERING SCALES. REDUCED SIZED PLANS WILL NOT CONFORM TO STANDARD SCALES. IN MAKING MEASUREMENTS ON REDUCED PLANS, THE ABOVE SCALES MAY BE USED.

J.U.L.I.E.
JOINT UTILITY LOCATION INFORMATION FOR EXCAVATION
1-800-892-0123
OR 811

PROJECT ENGINEER: PATTI LEBEAU (618) 346-3179
PROJECT MANAGER: HERVE GELIN (618) 346-3323

TRAFFIC DATA
ADT: 4000 (2010)
5400 (2030)
SU: 3.9%
MU: 3.2%



GROSS LENGTH = 77 FT = 0.0146 MI
NET LENGTH = 77 FT = 0.0146 MI

LATITUDE: 38.5716 LONGITUDE: 89.6864

STATE OF ILLINOIS
DEPARTMENT OF TRANSPORTATION
DIVISION OF HIGHWAYS

SUBMITTED June 29 2011
May C. Jamie
DEPUTY DIRECTOR OF HIGHWAYS, REGION 5 ENGINEER

August 19 2011
Scott E. Still, P.E.
ACTING ENGINEER OF DESIGN AND ENVIRONMENT

August 19 2011
Christine M. Reed
DIRECTOR OF HIGHWAYS, CHIEF ENGINEER

PRINTED BY THE AUTHORITY
OF THE STATE OF ILLINOIS

CONTRACT NO. 76C21