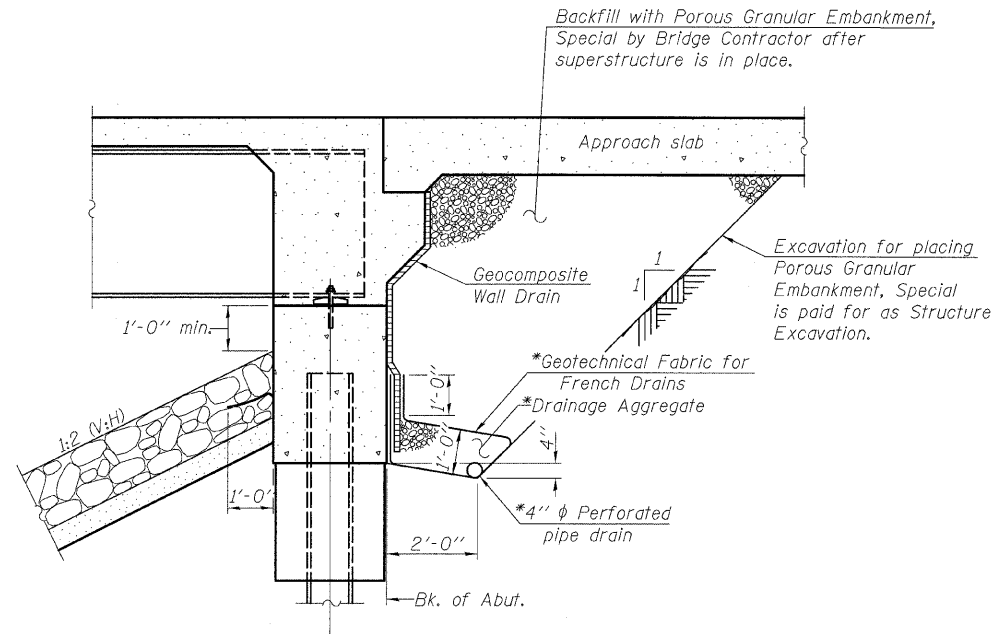


STATE OF ILLINOIS
DEPARTMENT OF TRANSPORTATION



SECTION THRU INTEGRAL ABUTMENT

*Included in the cost of Pipe Underdrains for Structures.

Note:

All drainage system components shall extend to 2'-0" from the end of each wingwall except an outlet pipe shall extend until intersecting with the side slopes. The pipes shall drain into concrete headwalls. (See Article 601.05 of the Standard Specifications and Highway Standard 601101).

GENERAL NOTES

Fasteners shall be AASHTO M164 Type 1, mechanically galvanized bolts. Bolts $\frac{3}{4}$ in. ϕ , holes $\frac{5}{16}$ in. ϕ , unless otherwise noted.
Calculated weight of Structural Steel = 98,300 AASHTO M 270 Grade 50.
Calculated weight of Structural Steel = 5,860 AASHTO M 270 Grade 36.
No field welding is permitted except as specified in the contract documents.
Reinforcement bars shall conform to the requirements of ASTM A 706 Gr 60. See Special Provisions.

Reinforcement bars designated (E) shall be epoxy coated.
The Inorganic Zinc Rich Primer / Acrylic / Acrylic Paint System shall be used for shop and field painting of new structural steel except where otherwise noted. The color of the final finish coat for all interior steel surfaces shall be gray, Munsell No. 5B 7/1. The color of the final finish coat for the exterior and bottom flange of the fascia beams shall be Gray, Munsell No. 5B 7/1. See Special Provision for "Cleaning and Painting New Metal Structures".

Layout of the slope protection system may be varied to suit ground conditions in the field as directed by the Engineer.

Excavation behind existing abutment walls shall be performed to balance front and back soil pressure before removing the existing superstructure. The contractor shall sawcut the upper portion of the existing abutment at the stage removal line before Stage I removal to ensure the remaining portion will not be prematurely damaged.

Temporary support beams for slab shall be installed for Stage I traffic and shall be placed before Stage I removal.

TOTAL BILL OF MATERIAL

| ITEM | UNIT | SUPER | SUB | TOTAL |
|--|---------|--------|-------|--------|
| Porous Granular Embankment, Special | Cu. Yd. | | 122 | 122 |
| Stone Riprap, Class A4 | Sq. Yd. | | 867 | 867 |
| Filter Fabric | Sq. Yd. | | 989 | 989 |
| Removal of Existing Structures | Each | | | 1 |
| Structure Excavation | Cu. Yd. | | 296 | 296 |
| Floor Drains | Each | 6 | | 6 |
| Concrete Structures | Cu. Yd. | | 57.6 | 57.6 |
| Concrete Superstructure | Cu. Yd. | 238.0 | | 238.0 |
| Bridge Deck Grooving | Sq. Yd. | 518 | | 518 |
| Concrete Encasement | Cu. Yd. | | 4.2 | 4.2 |
| Protective Coat | Sq. Yd. | 643 | | 643 |
| Furnishing and Erecting Structural Steel | L Sum | 1 | | 1 |
| Stud Shear Connectors | Each | 1,620 | | 1,620 |
| Reinforcement Bars, Epoxy Coated | Pound | 51,080 | 8,900 | 59,980 |
| Bar Splicers | Each | 545 | 20 | 565 |
| Furnishing Steel Piles HP12x53 | Foot | | 243 | 243 |
| Driving Piles | Foot | | 243 | 243 |
| Test Pile Steel HP12x53 | Each | | 1 | 1 |
| Pile Shoes | Each | | 12 | 12 |
| Name Plates | Each | 1 | | 1 |
| Anchor Bolts, 1" | Each | | 24 | 24 |
| Geocomposite Wall Drain | Sq. Yd. | | 75 | 75 |
| Pipe Underdrains for Structures 4" | Foot | | 154 | 154 |
| Drainage Scuppers, DS-11 | Each | 4 | | 4 |
| Temporary Soil Retention System | Sq. Ft. | | 658 | 658 |
| Temporary Support System | L Sum | | | 1 |

| | |
|----------|-----|
| DESIGNED | KAK |
| CHECKED | EML |
| DRAWN | KAK |
| CHECKED | EML |

GENERAL DATA
STRUCTURE NO. 014-0079

| | | | | | |
|---------------------|--------------------|----------|------------------|--------------|-----------|
| SHEET NO. 2 | F.A.P. RTE. | SECTION | COUNTY | TOTAL SHEETS | SHEET NO. |
| | 690 | 481B | CLINTON | 46 | 19 |
| 25 SHEETS | CONTRACT NO. 76C21 | | | | |
| FED. ROAD DIST. NO. | | ILLINOIS | FED. AID PROJECT | | |

HORNER & SHIFRIN, INC.
ENGINEERS