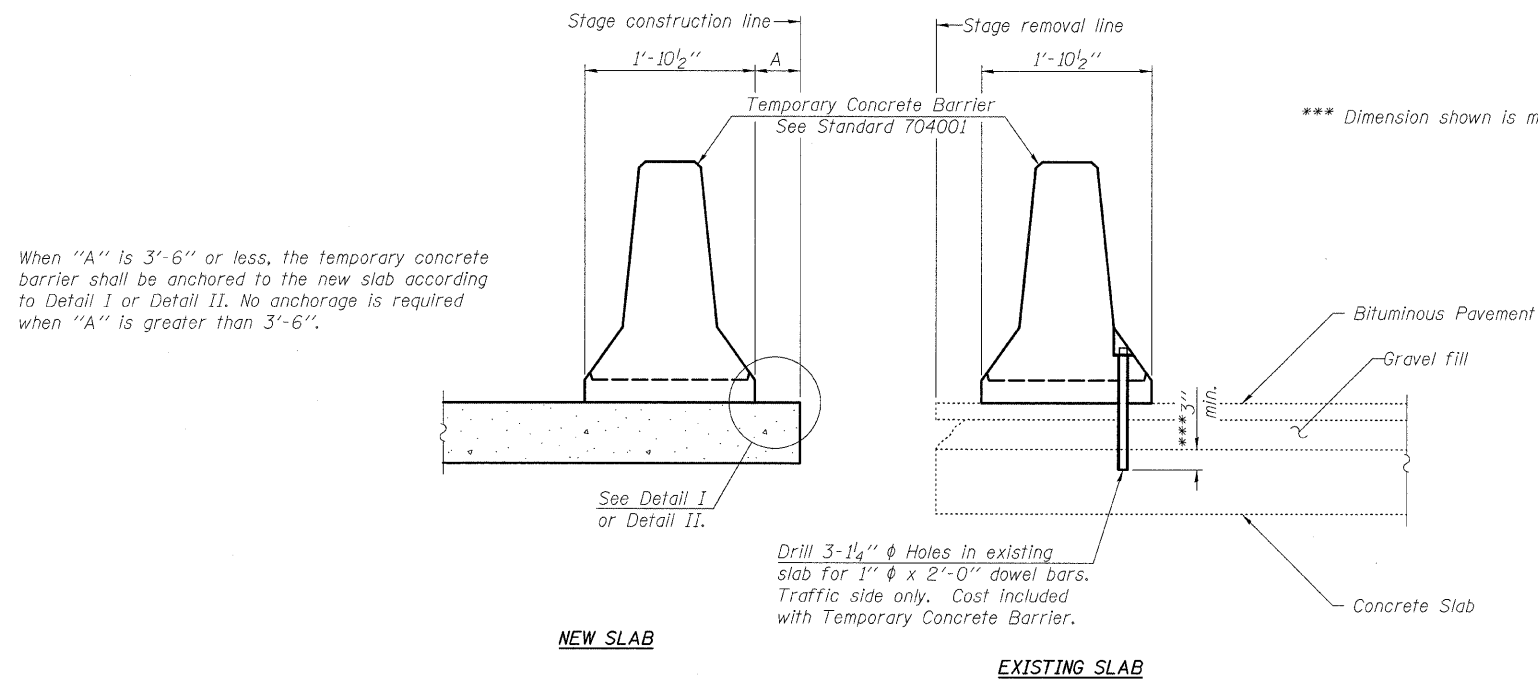
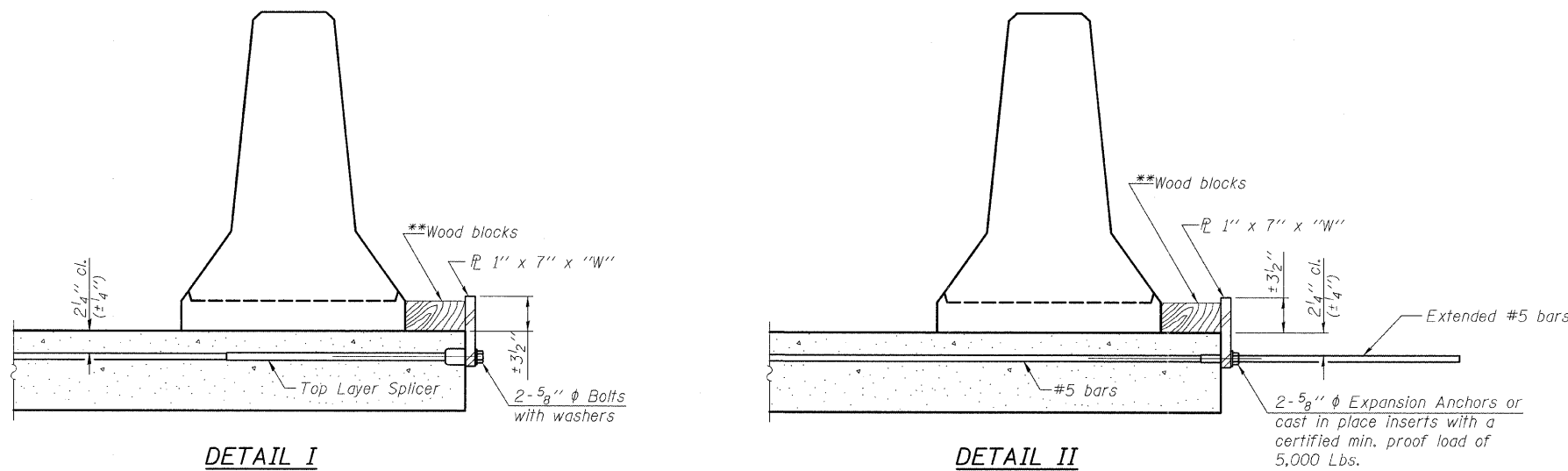


STATE OF ILLINOIS
DEPARTMENT OF TRANSPORTATION



SECTIONS THRU SLAB



***Wood blocks may be omitted when required to provide minimum stage traffic lane width. When the wood blocks are omitted, the concrete barrier shall be in direct contact with the steel retainer plate.

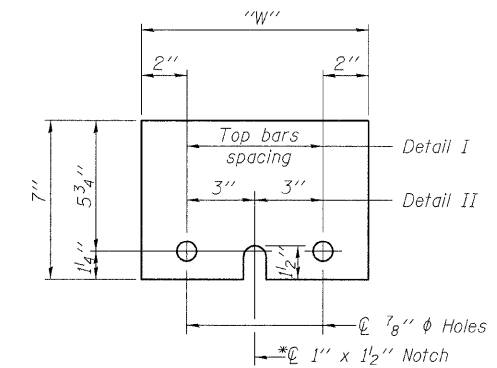
"W" = Top bars spacing + 4"

NOTES

Detail I - With Bar Splicer or Couplers:
Connect one (1) 1"x7"x10" steel \bar{L} to the top layer of couplers with 2-5/8" ϕ bolts screwed to coupler at approximate \bar{C} of each barrier panel.

Detail II - With Extended Reinforcement Bars:
Connect one (1) 1"x7"x10" steel \bar{L} to the concrete slab or concrete wearing surface with 2-5/8" ϕ Expansion Anchors or cast in place inserts spaced between the top layer of reinforcement at approximate \bar{C} of each barrier panel.

Cost of anchorage is included with Temporary Concrete Barrier. The 1" x 7" x 10" plate shall not be removed until stage II construction forms and all reinforcement bars are in place and the concrete is ready to be placed.



STEEL RETAINER \bar{L} 1" x 7" x 10"

* Required only with Detail II

DESIGNED	KAK
CHECKED	EML
DRAWN	KAK
CHECKED	EML

TEMPORARY CONCRETE BARRIER
FOR STAGE CONSTRUCTION
STRUCTURE NO. 014-0079

HORNER & SHIFRIN, INC.
ENGINEERS

SHEET NO. 6 25 SHEETS	F.A.P. RTE.	SECTION	COUNTY	TOTAL SHEETS	SHEET NO.
	690	481B	CLINTON	46	23
FED. ROAD DIST. NO.			ILLINOIS FED. AID PROJECT	CONTRACT NO. 76C21	