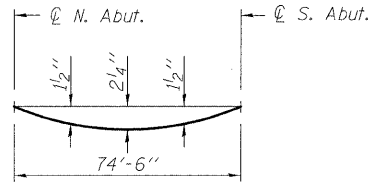


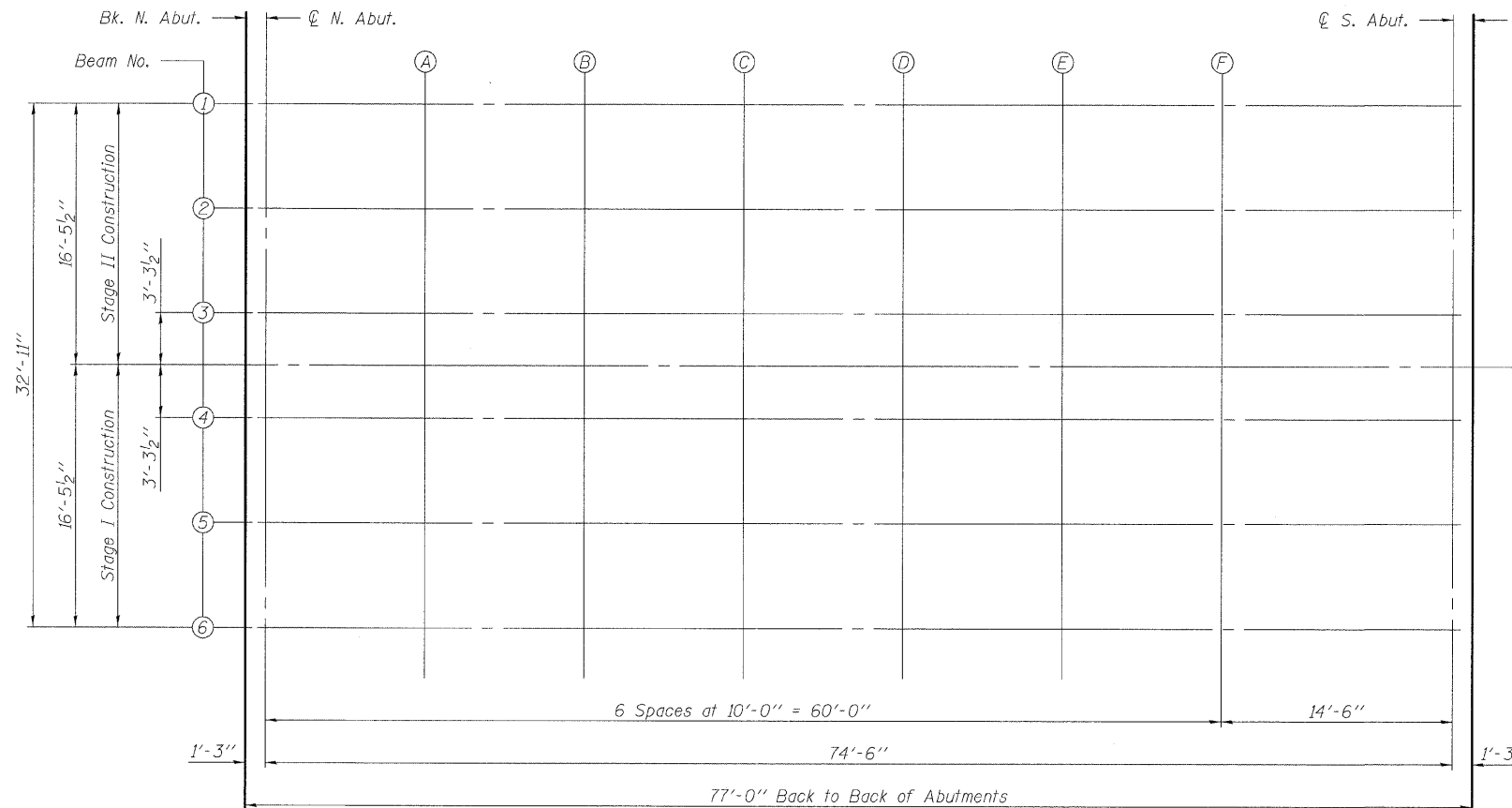
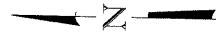
STATE OF ILLINOIS
DEPARTMENT OF TRANSPORTATION



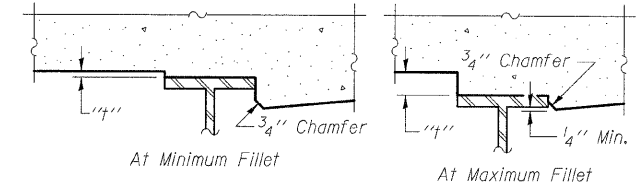
DEAD LOAD DEFLECTION DIAGRAM

(Includes weight of concrete only.)

Note:
The above deflections are not to be used in the field if the engineer is working from the grade elevations adjusted for dead load deflections as shown on sheets 7 and 8 of 25.



PLAN



To determine "t": After all structural steel has been erected, elevations of the top flanges of the beams shall be taken at intervals shown below. These elevations subtracted from the "Theoretical Grade Elevations Adjusted for Dead Load Deflection" shown below and on sheet 8 of 25, minus slab thickness, equals the fillet heights "t" above top flange of beams.

FILLET HEIGHTS

BEAM 1

Location	Station	Offset	Theoretical Grade Elevations	Theoretical Grade Elevations Adjusted For Dead Load Deflection
Bk. N. Abut.	622+77.50	-16.46	465.04	465.04
☉ N. Abut.	622+78.75	-16.46	465.04	465.04
A	622+88.75	-16.46	465.03	465.11
B	622+98.75	-16.46	465.03	465.17
C	623+08.75	-16.46	465.04	465.22
D	623+18.75	-16.46	465.06	465.24
E	623+28.75	-16.46	465.09	465.24
F	623+38.75	-16.46	465.12	465.23
☉ S. Abut.	623+53.25	-16.46	465.18	465.18
Bk. S. Abut.	623+54.50	-16.46	465.19	465.19

BEAM 2

Location	Station	Offset	Theoretical Grade Elevations	Theoretical Grade Elevations Adjusted For Dead Load Deflection
Bk. N. Abut.	622+77.50	-9.88	465.16	465.16
☉ N. Abut.	622+78.75	-9.88	465.16	465.16
A	622+88.75	-9.88	465.16	465.23
B	622+98.75	-9.88	465.16	465.29
C	623+08.75	-9.88	465.17	465.33
D	623+18.75	-9.88	465.19	465.36
E	623+28.75	-9.88	465.21	465.36
F	623+38.75	-9.88	465.25	465.35
☉ S. Abut.	623+53.25	-9.88	465.31	465.31
Bk. S. Abut.	623+54.50	-9.88	465.32	465.32

BEAM 3

Location	Station	Offset	Theoretical Grade Elevations	Theoretical Grade Elevations Adjusted For Dead Load Deflection
Bk. N. Abut.	622+77.50	-3.29	465.27	465.27
☉ N. Abut.	622+78.75	-3.29	465.27	465.27
A	622+88.75	-3.29	465.26	465.33
B	622+98.75	-3.29	465.26	465.39
C	623+08.75	-3.29	465.27	465.44
D	623+18.75	-3.29	465.29	465.46
E	623+28.75	-3.29	465.31	465.46
F	623+38.75	-3.29	465.35	465.45
☉ S. Abut.	623+53.25	-3.29	465.41	465.41
Bk. S. Abut.	623+54.50	-3.29	465.42	465.42

DESIGNED	KAK
CHECKED	EML
DRAWN	KAK
CHECKED	EML

**TOP OF SLAB ELEVATIONS
STRUCTURE NO. 014-0079**

**HORNER &
SHIFRIN, INC.
ENGINEERS**

SHEET NO. 7 25 SHEETS	F.A.P. RTE. 690	SECTION 481B	COUNTY CLINTON	TOTAL SHEETS 46	SHEET NO. 24
	CONTRACT NO. 76C21			ILLINOIS FED. AID PROJECT	