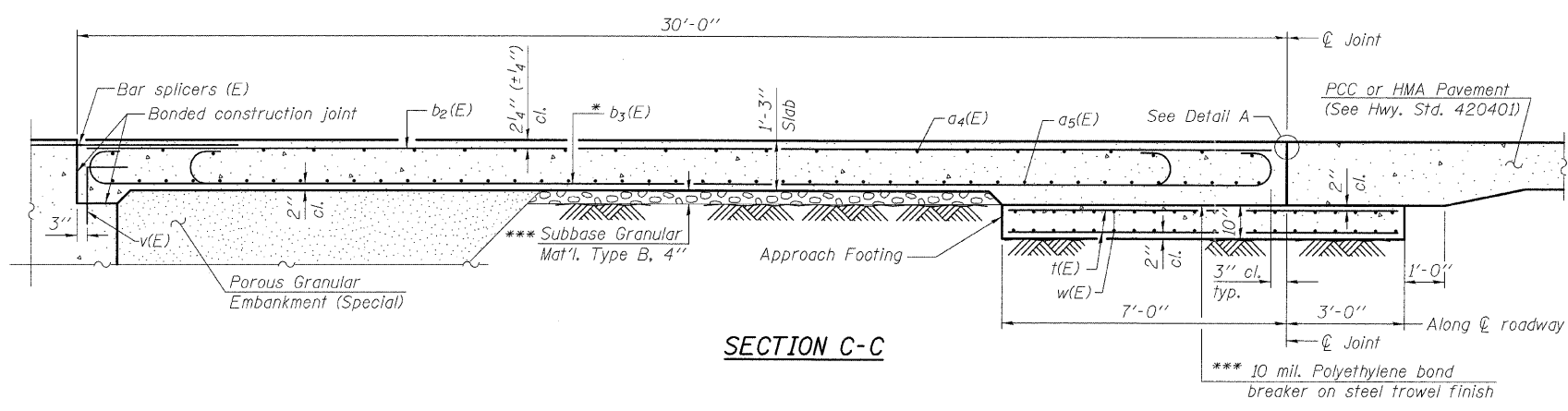
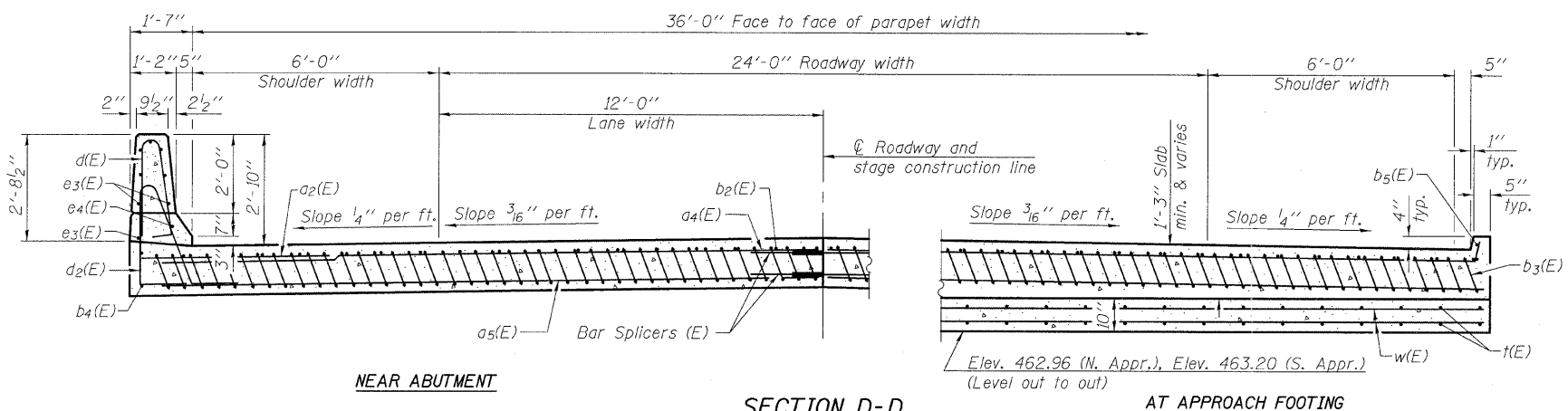


STATE OF ILLINOIS
DEPARTMENT OF TRANSPORTATION

Notes:
See sheet 13 of 25 for Detail A and View B-B.
Approach slab and parapet concrete shall be paid for as Concrete Superstructure.
Approach footing concrete shall be paid for as Concrete Structures.
Reinforcement shall be paid for as Reinforcement Bars, Epoxy Coated.
For v(E) bar details, see sheet 12 of 25.
The approach footing maximum applied service bearing pressure (Qmax) = 2.0 ksf.
For bar splicer details, see sheet 22 of 25.
Cost of excavation for approach footing included with Concrete Structures.
For Porous Granular Embankment (Special) and drainage treatment details, see sheet 2 of 25.
For additional parapet details, see sheet 13 of 25.



SECTION C-C



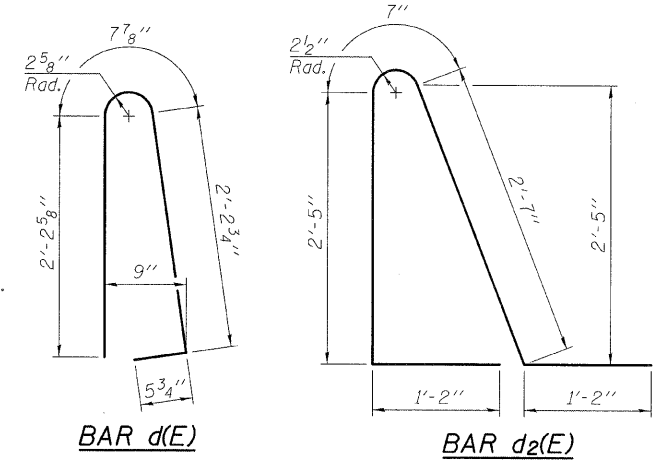
NEAR ABUTMENT

SECTION D-D

(See Plan for dimensions not shown)

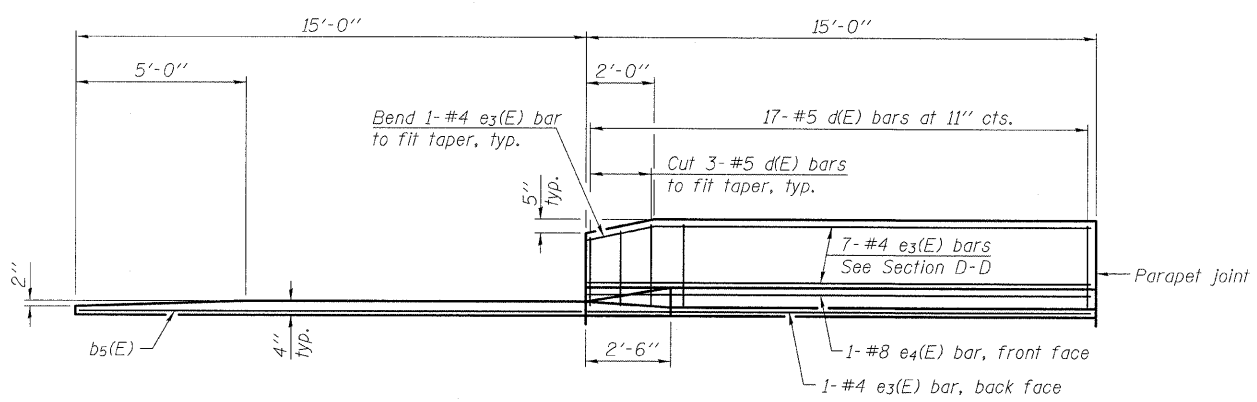
AT APPROACH FOOTING

* Tilt #9 b3(E) bars as required to maintain clearance.
*** Cost included with Concrete Superstructure.

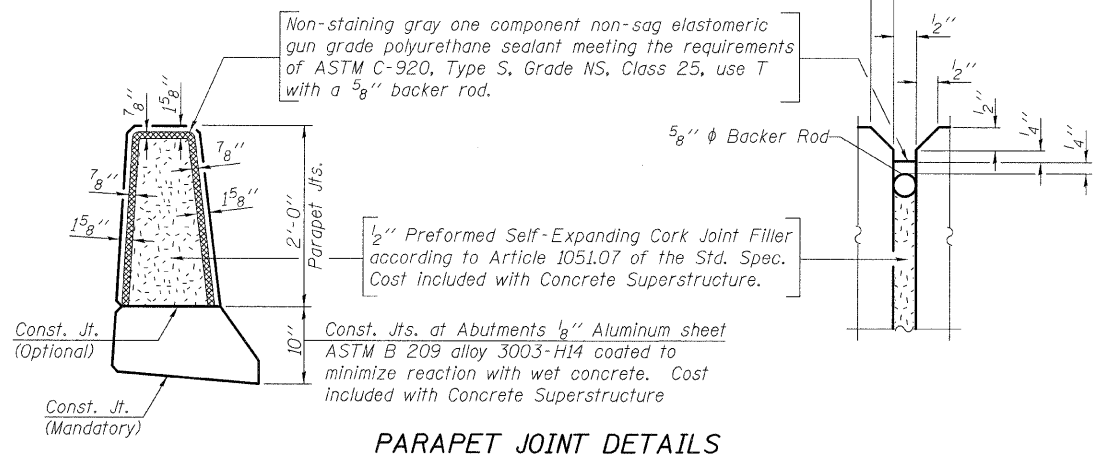


TWO APPROACHES
BILL OF MATERIAL

Bar	No.	Size	Length	Shape
a2(E)	48	#6	6'-6"	—
a4(E)	100	#4	18'-11"	—
a5(E)	184	#5	18'-7"	—
b2(E)	60	#4	29'-8"	—
b3(E)	180	#9	29'-9"	—
b4(E)	4	#4	14'-8"	—
b5(E)	4	#4	14'-6"	—
d(E)	68	#5	5'-7"	U
d2(E)	68	#5	7'-11"	U
e3(E)	32	#4	14'-8"	—
e4(E)	4	#8	14'-8"	—
t(E)	152	#4	9'-8"	—
w(E)	160	#5	18'-7"	—
Concrete Superstructure		Cu. Yd.		119.5
Concrete Structures		Cu. Yd.		23.4
Reinforcement Bars, Epoxy Coated		Pound		30,280

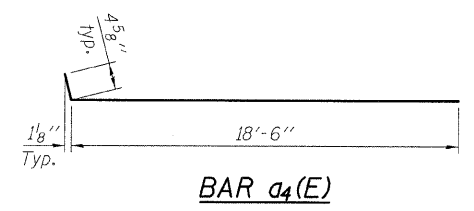


VIEW E-E

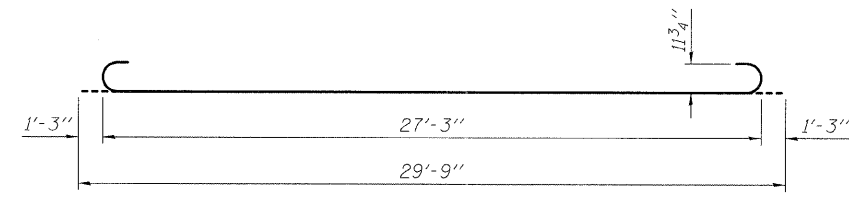


PARAPET JOINT DETAILS

DESIGNED	KAK
CHECKED	EML
DRAWN	KAK
CHECKED	EML



BAR a4(E)



BAR b3(E)



SHEET NO. 14 25 SHEETS	F.A.P. RTE.	SECTION	COUNTY	TOTAL SHEETS	SHEET NO.
	690	481B	CLINTON	46	31
FED. ROAD DIST. NO.			ILLINOIS FED. AID PROJECT	CONTRACT NO. 76C21	

BRIDGE APPROACH SLAB DETAILS
STRUCTURE NO. 014-0079