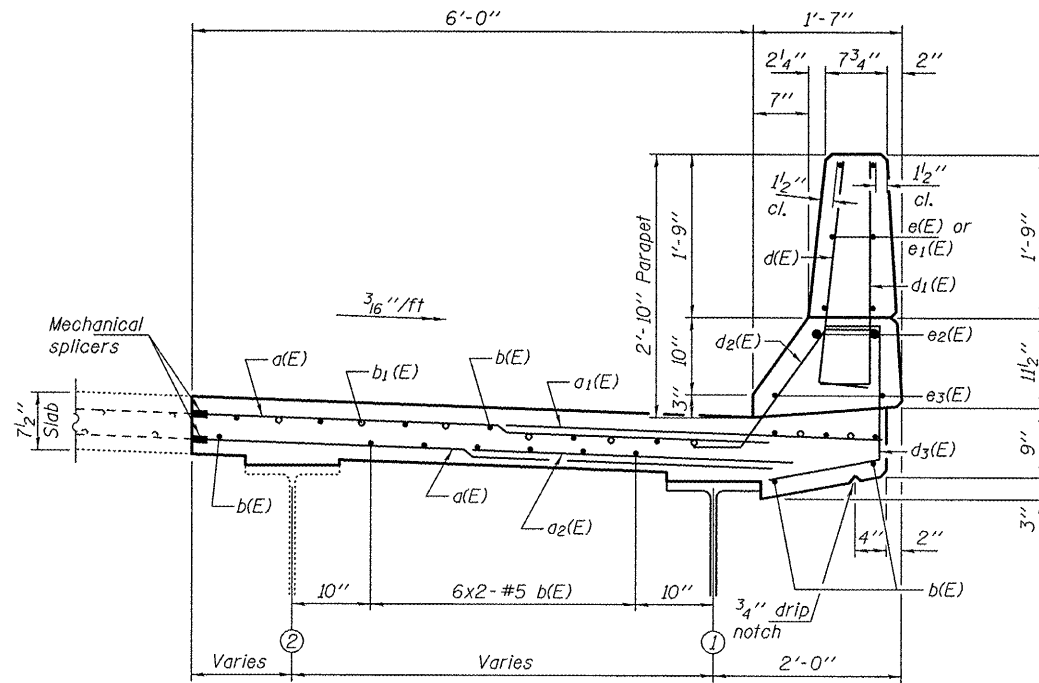
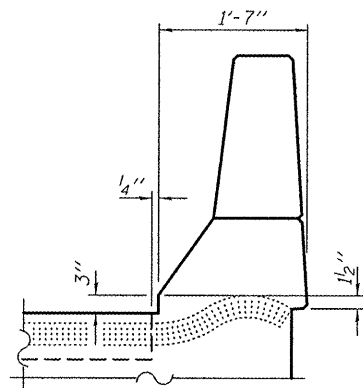


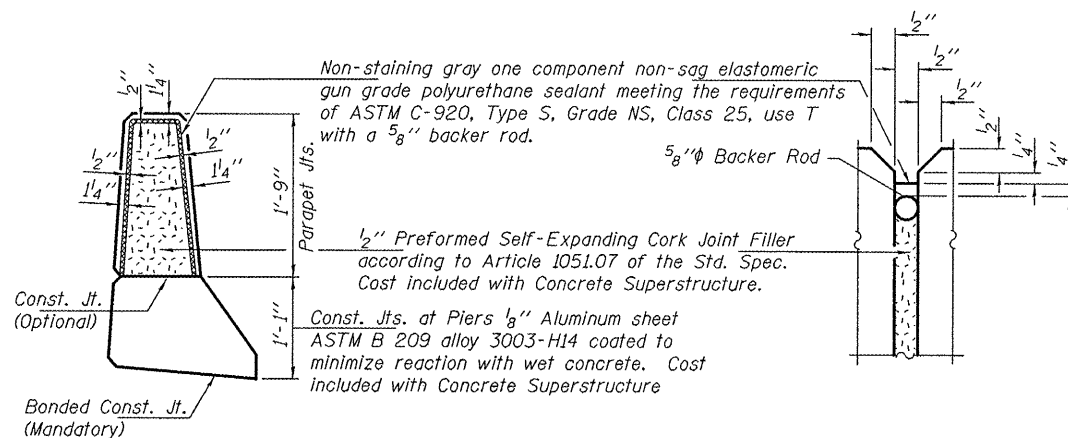
SECTION B-B



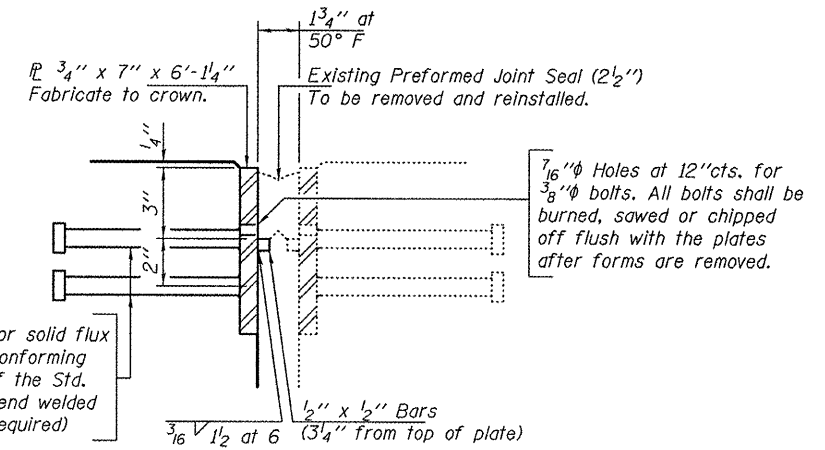
SECTION A-A



END TREATMENT



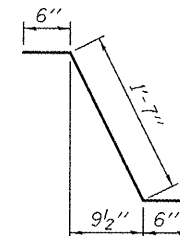
PARAPET JOINT DETAILS



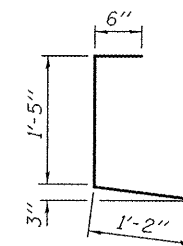
DETAIL A
Cost included with
Concrete Superstructure.

ELEVATION NEW JOINT R
TO EXISTING JOINT R

BARS d(E) & d1(E)



BAR d2(E)



BAR d3(E)

BILL OF MATERIAL

Bar	No.	Size	Length	Shape
a(E)	219	#5	6'-0"	—
a1(E)	64	#6	4'-0"	—
a2(E)	88	#5	3'-5"	—
a3(E)	1	#5	7'-0"	—
b(E)	36	#5	30'-9"	—
b1(E)	8	#6	12'-9"	—
d(E)	64	#5	3'-0"	┌
d1(E)	59	#4	3'-0"	┌
d2(E)	64	#5	2'-7"	┌
d3(E)	59	#4	3'-1"	┌
e(E)	6	#4	16'-0"	—
e1(E)	18	#4	13'-8"	—
e2(E)	4	#8	31'-7"	—
e3(E)	4	#5	30'-3"	—
Concrete Removal			Cu. Yd.	17.4
Concrete Superstructure			Cu. Yd.	17.4
Reinforcement Bars, Epoxy Coated			Lbs.	4690

Bars indicated thus 1 x 2-#5 etc. indicates 1 line of bars with 2 lengths per line.

DESIGNED ATH
CHECKED ADY
DRAWN balva
CHECKED ATH ADY

EXAMINED *James F. Jolly* DATE JULY 27, 2011
PASSED ACTING ENGINEER OF STRUCTURAL SERVICES
ACTING ENGINEER OF BRIDGES AND STRUCTURES

STATE OF ILLINOIS
DEPARTMENT OF TRANSPORTATION

REPAIR DETAILS
SN 060-0046

SHEET 3 OF 9 SHEETS

F.A.I. RTE.	SECTION	COUNTY	TOTAL SHEETS	SHEET NO.
270	60-3HB-1-HDF-1	MADISON	15	9
CONTRACT NO. 76F08				
ILLINOIS FED. AID PROJECT				