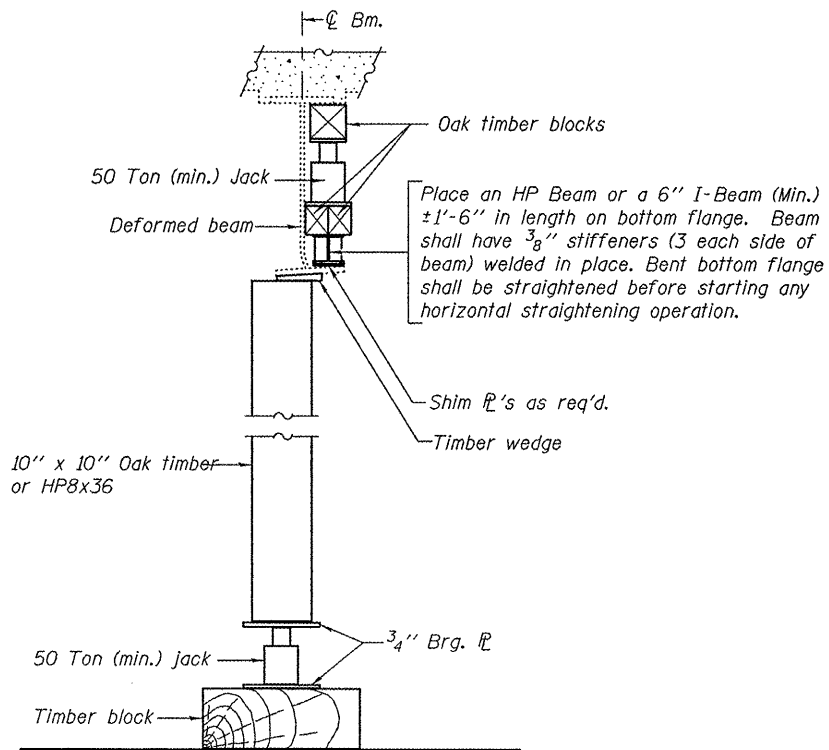


PULLING DEVICE

PUSHING DEVICE

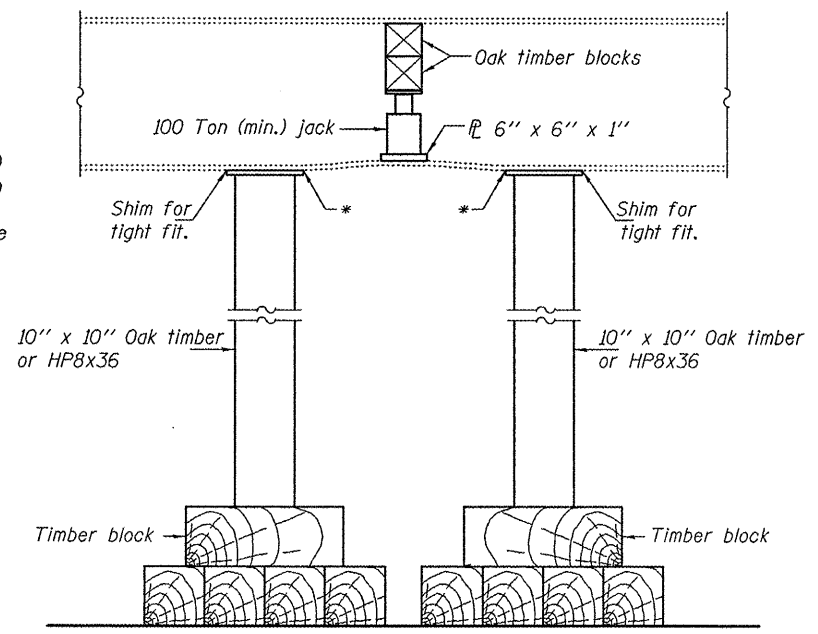
PARTIAL PLANS
SUGGESTED BEAM STRAIGHTENING METHODS

Straightening force shall be maintained on all load transfer blocking during beam straightening.



SUGGESTED VERTICAL STRAIGHTENING DETAIL

(To correct flange rotation.)



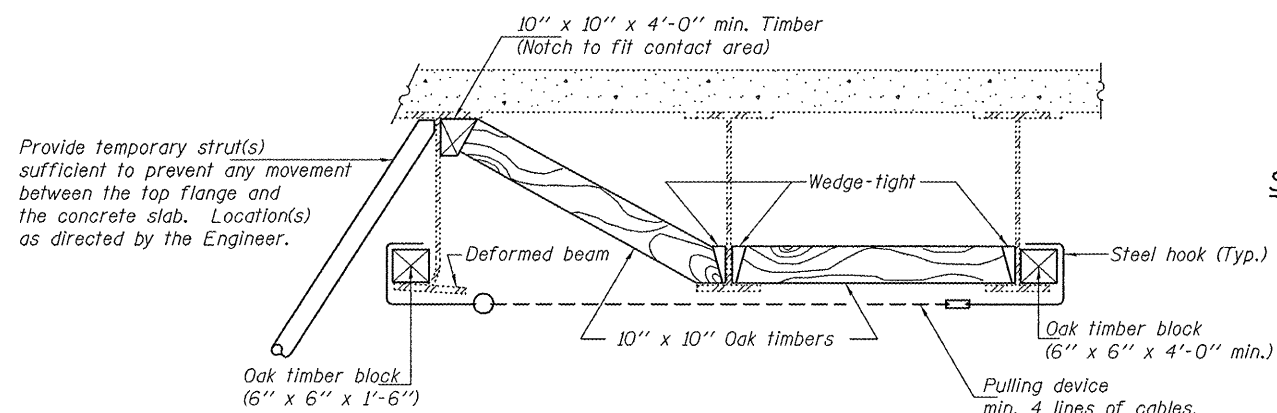
SUGGESTED VERTICAL STRAIGHTENING DETAIL

(To correct localized vertical flange deformations.)

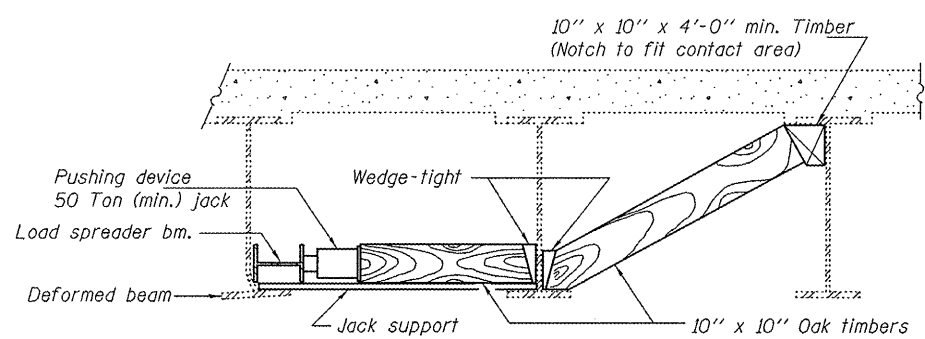
* Edge of plate shall line up with edge of deformation.

Note:

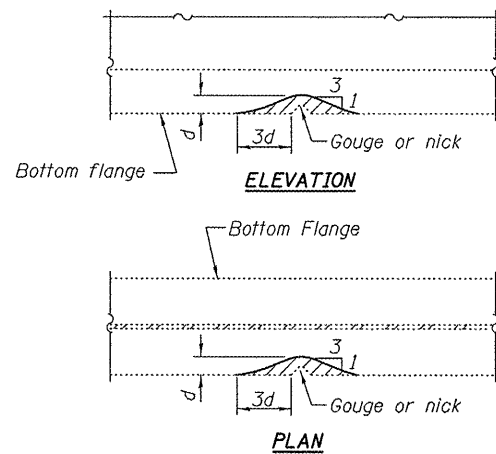
Braces and jack assembly shall be placed on same side of web. Bent bottom flange shall be straightened before starting any horizontal straightening operations.



SECTION A-A

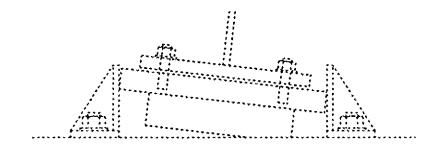


SECTION B-B



GRINDING DETAIL

Grind existing nicks, gouges and shallow cracks in the damaged beams as detailed. Ground surfaces shall be inspected for cracks using magnetic particle testing prior to initiating any beam straightening operations. Any cracks that cannot be removed by grinding approximately 1/4 inch deep shall be identified and reported to the Bureau of Bridges and Structures for further disposition. Ground surfaces shall be spot cleaned and painted with an aluminum epoxy mastic primer followed by a finish coat to match the color of the existing beam. Cost of grinding, testing and spot painting included with Beam Straightening.



SECTION AT BEAM 1, PIER 3
Existing bearing to be repositioned. See Special Provision for Jack and Reposition Bearings

REACTION TABLE AT Pier 3		
Q	(k)	24.6
L	(k)	36.2
Imp.	(k)	9.4
Total	(k)	70.2

REP-11-14-2005

DESIGNED ATH	EXAMINED	DATE JULY 27, 2011
CHECKED ADY	PASSED	
DRAWN ballva		
CHECKED ATH ADY		

STATE OF ILLINOIS
DEPARTMENT OF TRANSPORTATION

REPAIR DETAILS
SN 060-0046

SHEET 9A OF 9 SHEETS

F.A.I. RTE.	SECTION	COUNTY	TOTAL SHEETS	SHEET NO.
270	60-3HB-1-HDF-1	MADISON	15	15A
CONTRACT NO. 76F08				
ILLINOIS FED. AID PROJECT				