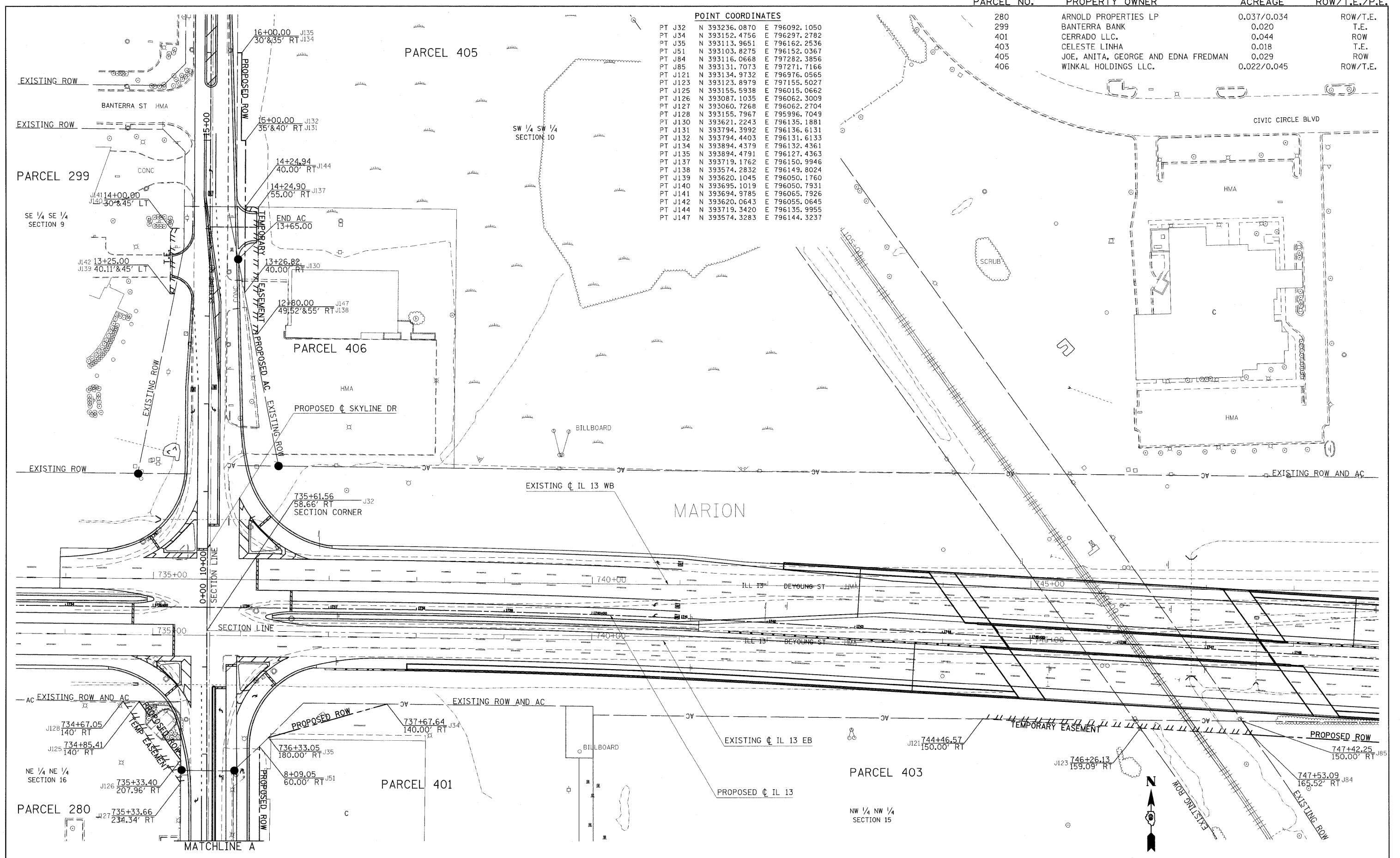


PARCEL NO.	PROPERTY OWNER	ACREAGE	ROW/T.E./P.E.
280	ARNOLD PROPERTIES LP	0.037/0.034	ROW/T.E.
299	BANTERRA BANK	0.020	T.E.
401	CERRADO LLC.	0.044	ROW
403	CELESTE LINHA	0.018	T.E.
405	JOE, ANITA, GEORGE AND EDNA FREDMAN	0.029	ROW
406	WINKAL HOLDINGS LLC.	0.022/0.045	ROW/T.E.

POINT COORDINATES

PT J32	N 393236.0870	E 796092.1050
PT J34	N 393152.4756	E 796297.2782
PT J35	N 393113.9651	E 796162.2536
PT J51	N 393103.8275	E 796152.0367
PT J84	N 393116.0668	E 797282.3856
PT J85	N 393131.7073	E 797271.7166
PT J121	N 393134.9732	E 796976.0565
PT J123	N 393123.8979	E 797155.5027
PT J125	N 393155.5938	E 796015.0662
PT J126	N 393087.1035	E 796062.3009
PT J127	N 393060.7268	E 796062.2704
PT J128	N 393155.7967	E 795996.7049
PT J130	N 393621.2243	E 796135.1881
PT J131	N 393794.3992	E 796136.6131
PT J132	N 393794.4403	E 796131.6133
PT J134	N 393894.4379	E 796132.4361
PT J135	N 393894.4791	E 796127.4363
PT J137	N 393719.1762	E 796150.9946
PT J138	N 393574.2832	E 796149.8024
PT J139	N 393620.1045	E 796050.1760
PT J140	N 393695.1019	E 796050.7931
PT J141	N 393694.9785	E 796065.7926
PT J142	N 393620.0643	E 796055.0645
PT J144	N 393719.3420	E 796135.9955
PT J147	N 393574.3283	E 796144.3237



FILE NAME	USER NAME = obrtenma	DESIGNED -	REVISED -	STATE OF ILLINOIS DEPARTMENT OF TRANSPORTATION	RIGHT OF WAY PLANS		F.A.P. RTE. 14	SECTION (1X-1)R-7	COUNTY WILLIAMSON	TOTAL SHEETS 79	SHEET NO. 24	
PROJECT NON-FA	JOB NO. R99-004-03	DRAWN -	REVISED -		SCALE: 1"=50'	PROJECT SHEET NO.	OF SHEETS	STA.	TO STA.	FED. ROAD DIST. NO.	ILLINOIS FED. AID PROJECT	CONTRACT NO. 98859
PLOT SCALE = 50.0000' / IN.		CHECKED -	REVISED -									
PLOT DATE = 3/24/2011		DATE -	REVISED -									