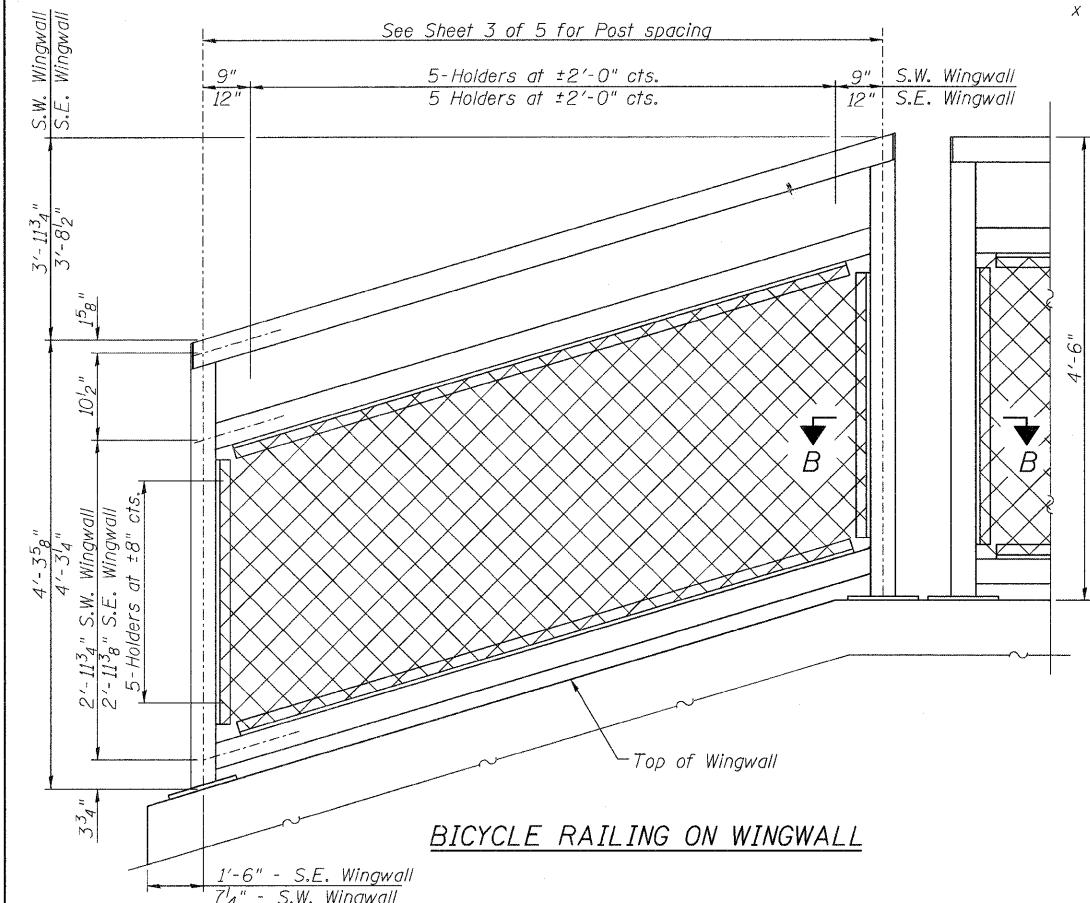
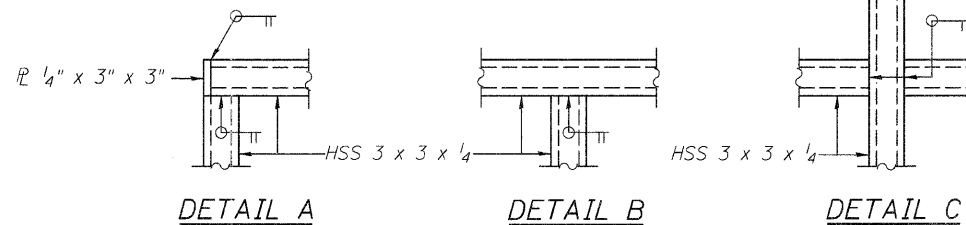


BICYCLE RAILING ON HEADWALL



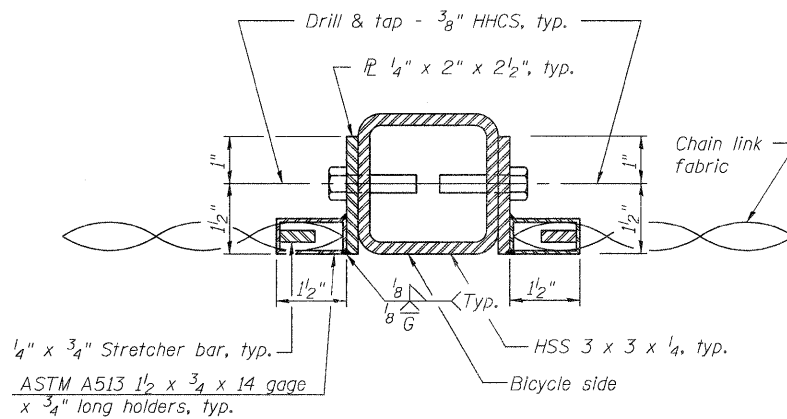
BICYCLE RAILING ON WINGWALL



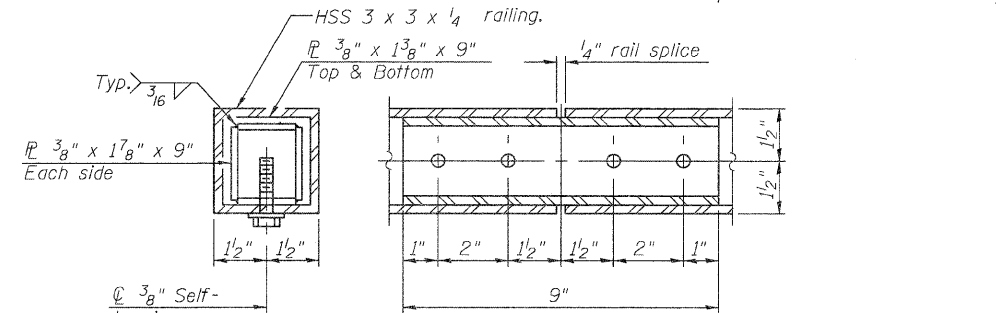
DETAIL A

DETAIL B

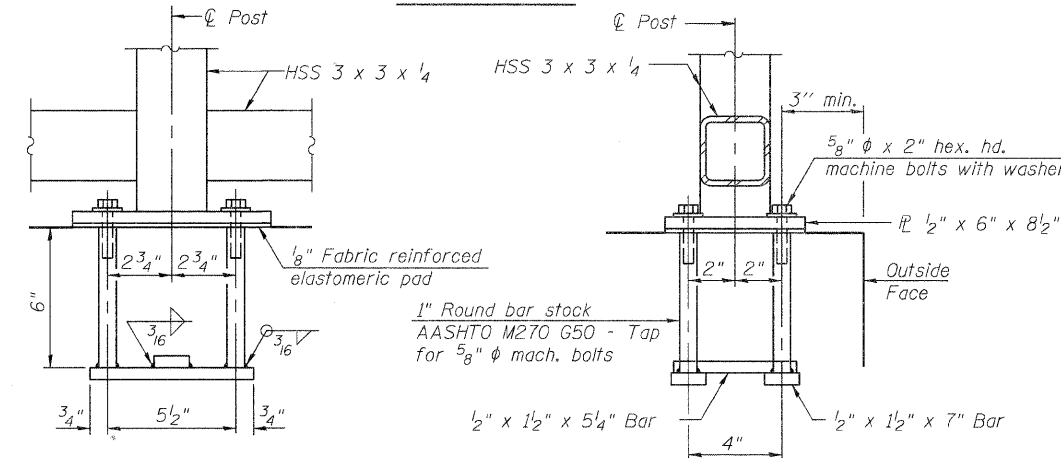
DETAIL C



SECTION A-A

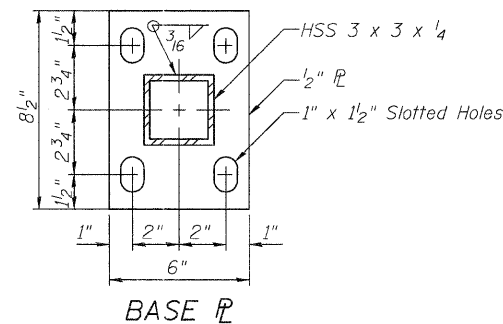


RAIL SPLICE

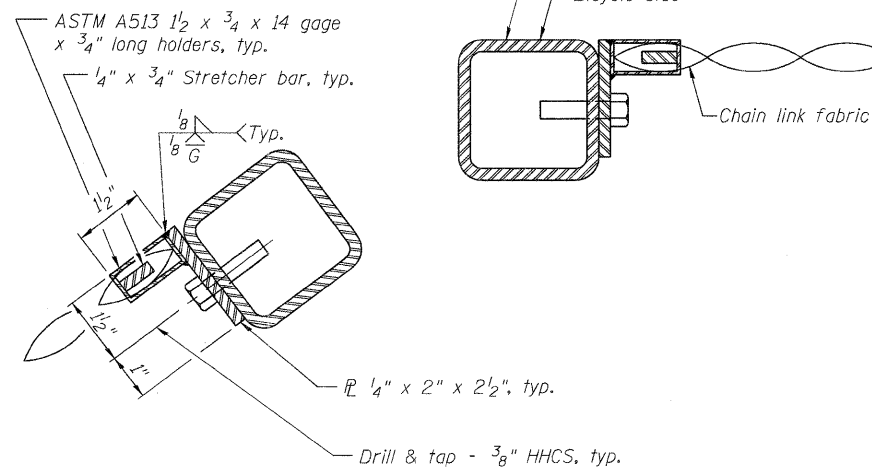


ANCHOR BOLT DETAILS

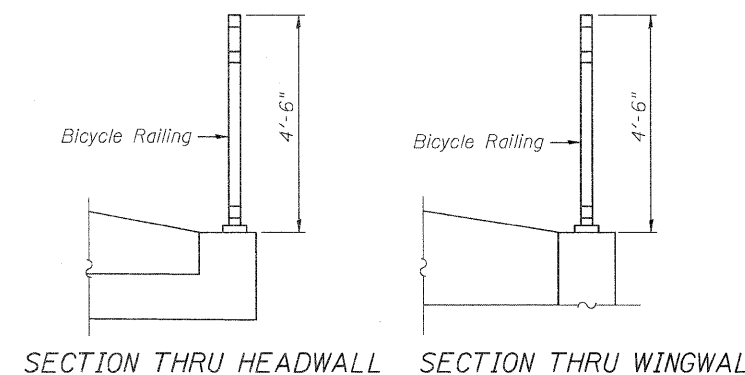
In lieu of the cast-in-place anchor device shown, the Contractor has the option of drilling and setting 5/8" ϕ anchor rods according to Article 509.06 of the Standard Specifications. Embedment shall be according to the manufacturer's specifications.



BASE PLATE



SECTION B-B



SECTION THRU HEADWALL

SECTION THRU WINGWALL

Notes:
 All steel rail elements shall be galvanized according to Article 509.05 of the Standard Specifications.
 The 9 gauge fabric ties shall be according to Article 1006.27 (d) of the Standard Specifications.
 Installation of the chain link fabric shall be according to Section 664 of the Standard Specifications.
 Hollow structural sections shall conform to the requirements of ASTM designation A 500, Grade B, structural steel tubing. The chain link fabric shall be placed along Bicycle Side as shown on Section A-A and Section B-B.
 The chain link fabric shall conform to the requirements of Article 1006.27(a)(1)a, b or c of the Standard Specifications. Space reinforcement to miss anchor devices.
 See Sheet 3 of 5 for plan and elevation view of Bicycle railing.

BILL OF MATERIAL

Item	Unit	Quantity
Bicycle Railing	Foot	61