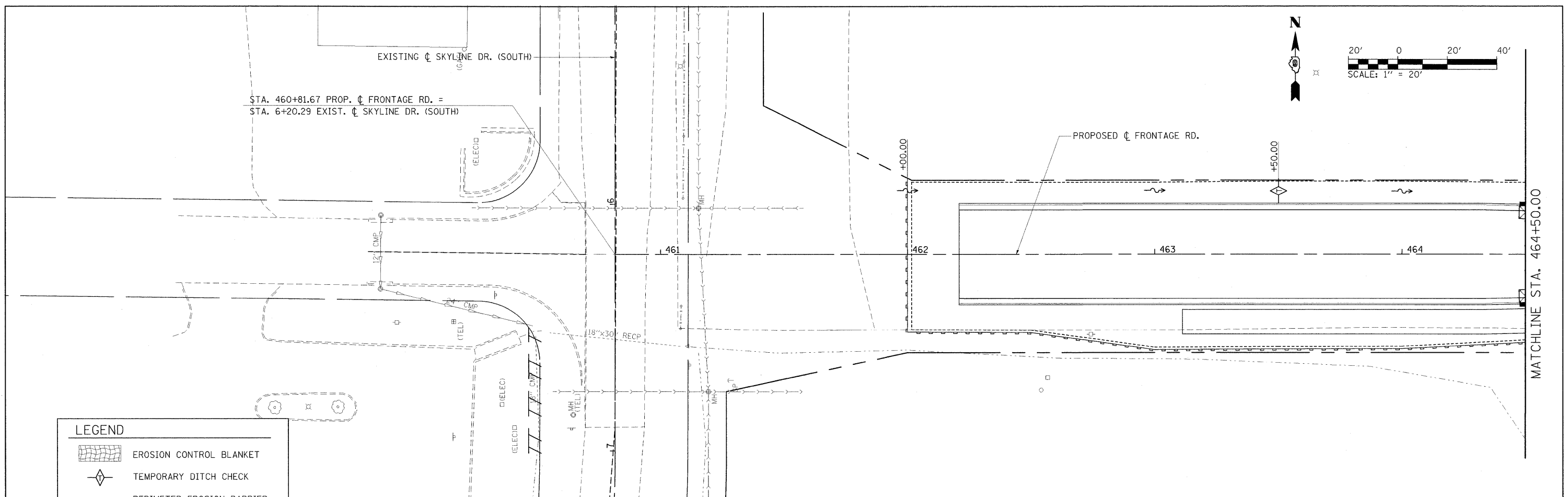
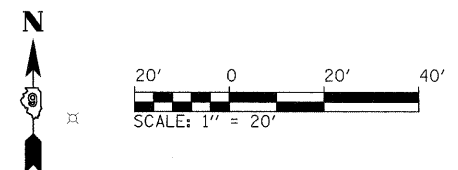
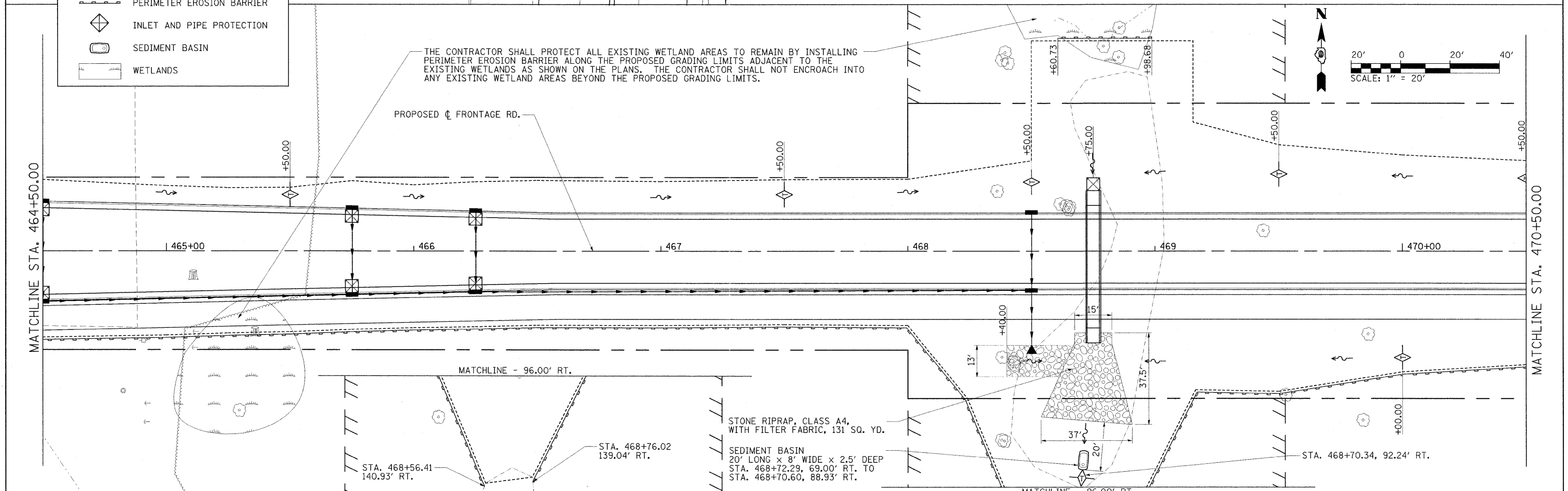
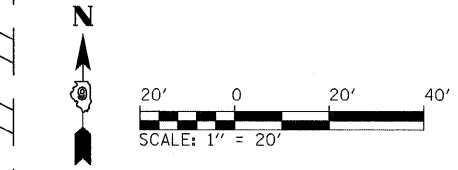


EXISTING ϕ SKYLINE DR. (SOUTH)
 STA. 460+81.67 PROP. ϕ FRONTAGE RD. =
 STA. 6+20.29 EXIST. ϕ SKYLINE DR. (SOUTH)



LEGEND	
	EROSION CONTROL BLANKET
	TEMPORARY DITCH CHECK
	PERIMETER EROSION BARRIER
	INLET AND PIPE PROTECTION
	SEDIMENT BASIN
	WETLANDS

THE CONTRACTOR SHALL PROTECT ALL EXISTING WETLAND AREAS TO REMAIN BY INSTALLING PERIMETER EROSION BARRIER ALONG THE PROPOSED GRADING LIMITS ADJACENT TO THE EXISTING WETLANDS AS SHOWN ON THE PLANS. THE CONTRACTOR SHALL NOT ENCROACH INTO ANY EXISTING WETLAND AREAS BEYOND THE PROPOSED GRADING LIMITS.



STONE RIPRAP, CLASS A4,
 WITH FILTER FABRIC, 131 SQ. YD.
 SEDIMENT BASIN
 20' LONG X 8' WIDE X 2.5' DEEP
 STA. 468+72.29, 69.00' RT. TO
 STA. 468+70.60, 88.93' RT.

FILE NAME =	USER NAME = Brian Bond	DESIGNED - BMB	REVISED -	STATE OF ILLINOIS DEPARTMENT OF TRANSPORTATION	EROSION CONTROL PLAN FRONTAGE ROAD		F.A. RTE. 331	SECTION (1X-1) R-7	COUNTY WILLIAMSON	TOTAL SHEETS 79	SHEET NO. 39	
1:\DOT\0906603\Draw\CADD_Sheets\Frontage Road Contract\0998959-shr-eros03.dgn	PLOT SCALE = 23.0000' / IN.	DRAWN - RAH	REVISED -		SCALE: 1" = 20'	SHEET NO. OF SHEETS	STA. 460+81.67 TO STA. 464+50	CONTRACT NO. 78251				
	PLOT DATE = 3/22/2011	CHECKED - SPH	REVISED -		ILLINOIS FED. AID PROJECT							
		DATE - 3/16/11	REVISED -									