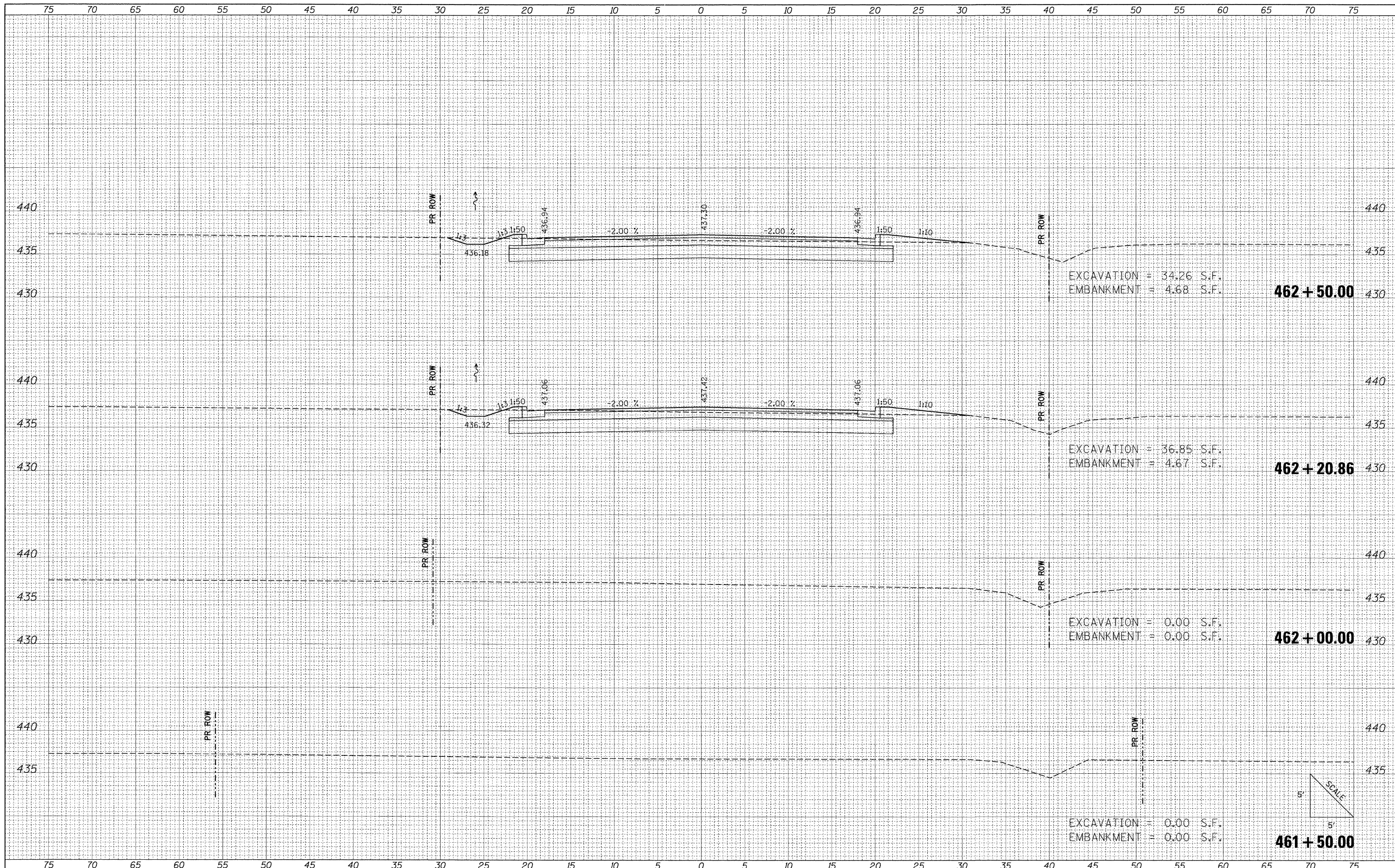


BY	DATE
FINAL SURVEY	
PLOTTED	
TEMPLATE	
NO. AREAS CHECKED	

BY	DATE
ORIGINAL SURVEY	
PLOTTED	
TEMPLATE	
NO. AREAS CHECKED	



FILE NAME = I:\J00T\0906603\Draw\CADD_Sheets\Frontage Road	USER NAME = Brian Bond	DESIGNED - BMB	REVISIED -	STATE OF ILLINOIS DEPARTMENT OF TRANSPORTATION	PROPOSED CROSS SECTIONS FRONTAGE ROAD			F.A. RTE. 331	SECTION (1X-1) R-7	COUNTY WILLIAMSON	TOTAL SHEETS 79	SHEET NO. 52
	Contract\0906603-shd-xs\Frontage.dgn	DRAWN - RAH	REVISIED -		SCALE:	SHEET NO. OF SHEETS	STA. 461+50.00 TO STA. 462+50.00	ILLINOIS FED. AID PROJECT				
	PLOT SCALE = 5.0000" / 1"	CHECKED - SPH	REVISIED -									
	PLOT DATE = 3/17/2011	DATE - 3/16/11	REVISIED -									