

STATE OF ILLINOIS  
DEPARTMENT OF TRANSPORTATION

RTE.	SECTION	COUNTY	TOTAL SHEETS	SHEET NO.
*	06-00236-00-LS	ROCK ISLAND	17	1
FED. ROAD DIST. NO. 2		ILLINOIS	CONTRACT NO. 85542	
* 1ST AVE. - GREAT RIVER ROAD				

# PROPOSED PLANS

SECTION 06-00236-00-LS  
PROJECT SBIL-IL06(016)  
JOB NO. C-92-034-07  
CITY OF MOLINE  
ROCK ISLAND COUNTY

## INDEX OF SHEETS

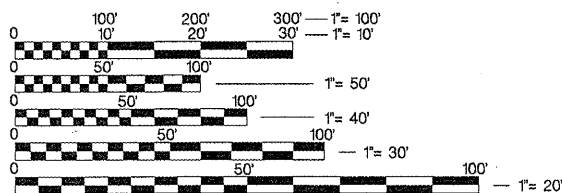
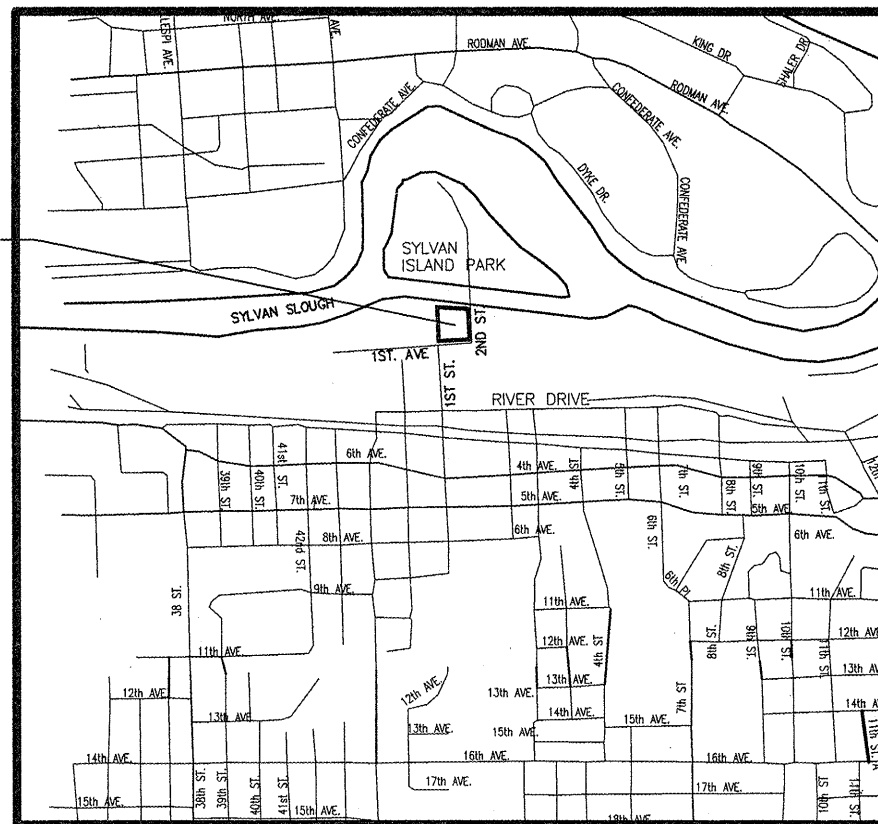
- 1 COVER SHEET
- 2 SUMMARY OF QUANTITIES
- 3 SCHEDULE OF QUANTITIES
- 4 GENERAL NOTES
- 5 DEMOLITION SHEET
- 6 PLAN SHEET
- 7-9 PROFILES AND CROSS SECTIONS
- 10 GRADING PLAN
- 11 EROSION CONTROL PLAN
- 12 LANDSCAPE PLAN
- 13-14 DETAILS
- 15-17 CITY OF MOLINE DETAILS

## STANDARDS

- 280001-05 TEMPORARY EROSION CONTROL SYSTEMS
- 424001-05 CURB RAMPS FOR SIDEWALKS
- 606001-04 CONCRETE CURB TYPE B AND COMBINATION CONCRETE CURB AND GUTTER
- 701001-02 OFF-RD OPERATIONS, 2L, 2W, MORE THAN 15' AWAY
- 701006-03 OFF-RD OPERATIONS, 2L, 2W, 15' TO 24' FROM PAVEMENT EDGE
- 701301-04 LANE CLOSURE, 2L, 2W, SHORT TIME OPERATIONS
- 701501-06 URBAN LANE CLOSURE, 2L, 2W, UNDIVIDED
- 701801-04 LANE CLOSURE MULTILANE 1W OR 2W CROSSWALK OR SIDEWALK CLOSURE
- 701901-01 TRAFFIC CONTROL DEVICES
- 720001-01 SIGN PANEL MOUNTING DETAIL
- 720006-02 SIGN PANEL ERECTION DETAILS
- 720011-01 SIGN POSTS FOR SIGNS MARKERS AND DELINEATORS
- 728001-01 TELESCOPING STEEL SIGN SUPPORT
- 729001-01 APPLICATION OF TYPES A AND B POSTS

**BIR 21-8 TYPICAL APPLICATION OF TRAFFIC CONTROL DEVICES FOR CONSTRUCTION ON RURAL LOCAL HIGHWAYS**

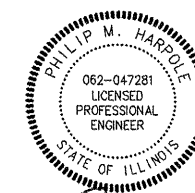
PROJECT LOCATION



FULL SIZE PLANS HAVE BEEN PREPARED USING STANDARD ENGINEERING SCALES. REDUCED SIZED PLANS WILL NOT CONFORM TO STANDARD SCALES. IN MAKING MEASUREMENTS ON REDUCED PLANS, THE ABOVE SCALES MAY BE USED.

JULIE.  
JOINT UTILITY LOCATION INFORMATION FOR EXCAVATION  
1-800-892-0123  
OR 811

PROJECT LENGTH SITE IMPROVEMENT  
1st AVE. ADT: 80 (2031) TRUCKS: 10%  
LOCAL ROAD



Signature: *Philip M. Harpole*  
Date: 7-12-2011  
Exp. Date: 11-30-2011  
ILLINOIS FIRM NO. 184-000214

STATE OF ILLINOIS DEPARTMENT OF TRANSPORTATION	
APPROVED	<i>[Signature]</i> CITY OF MOLINE, CITY ENGINEER
PASSED	7-21 2011 <i>[Signature]</i> DISTRICT #2 ENGINEER OF LOCAL ROADS & STREETS
RELEASING FOR BID BASED ON LIMITED REVIEW	7-21 2011 <i>[Signature]</i> DEPUTY DIRECTOR OF HIGHWAYS, REGION #2 ENGINEER

CONTRACT NO. 85542