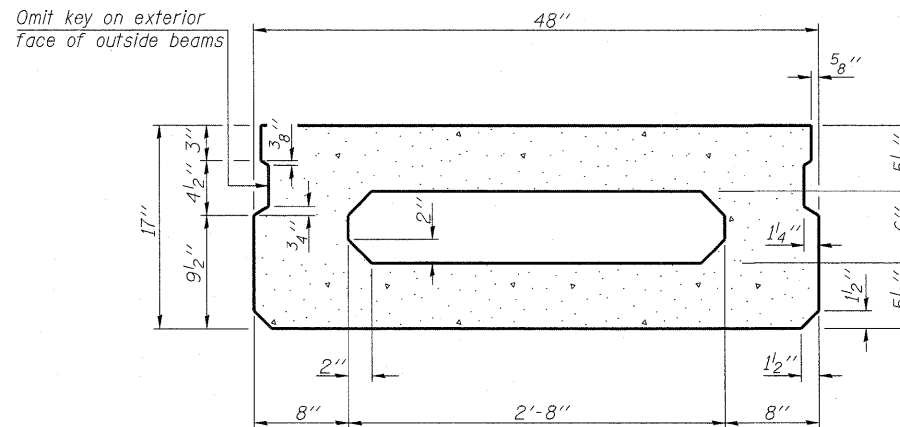
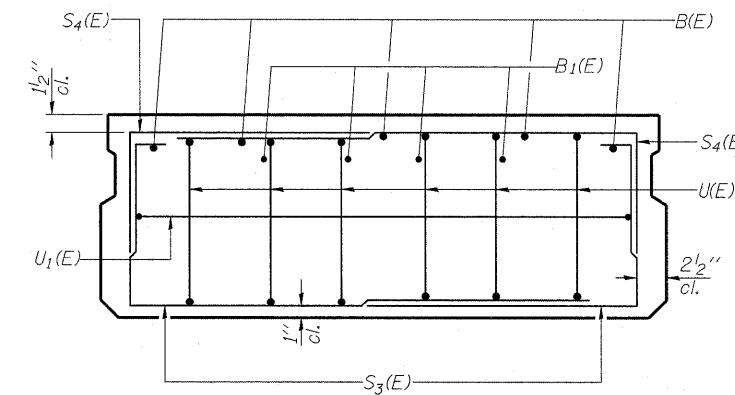


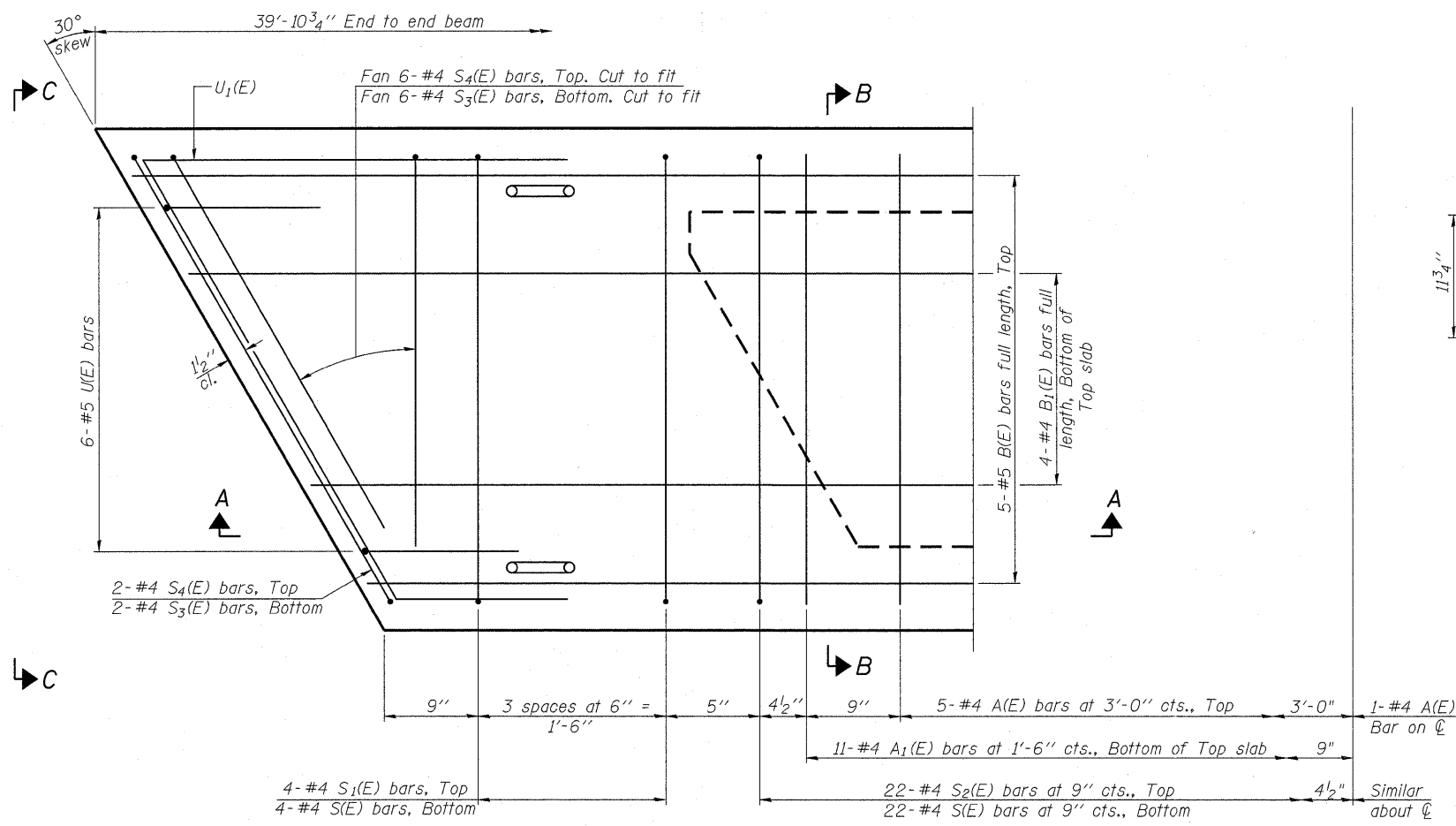
SECTION A-A



SECTION B-B
(Showing dimensions)



VIEW C-C

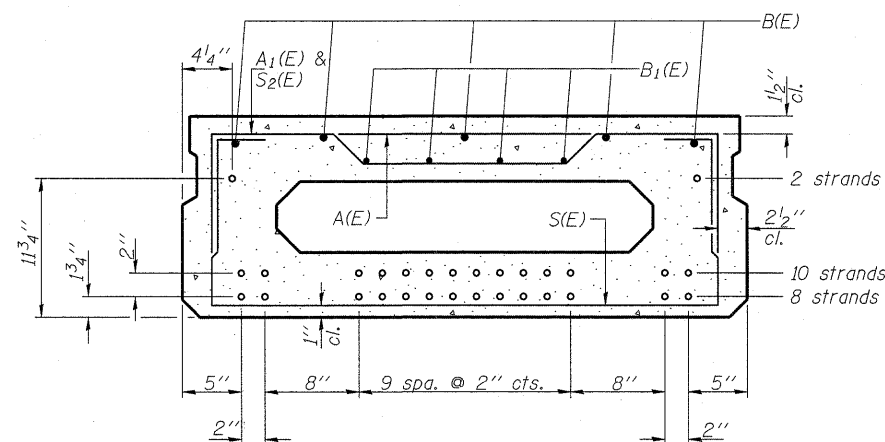


PLAN VIEW

Note: Spacing of S(E) and S2(E) bars may be adjusted up to 4" in the immediate area of the transverse tie diaphragms to miss the block outs for the transverse ties.

MINIMUM BAR LAP

#4 bar = 2'-0"
#5 bar = 2'-6"



SECTION B-B

(Showing reinforcement and permissible strand locations)

Note: Place the number of strands specified in each row symmetrically about the centerline of beam in the permissible strand locations shown.

BAR LIST
ONE BEAM ONLY
(For information only)

Bar	No.	Size	Length	Shape
A(E)	11	#4	3'-7"	—
A1(E)	22	#4	3'-10"	—
B(E)	5	#5	39'-7"	—
B1(E)	4	#4	39'-7"	—
S(E)	52	#4	6'-9"	U
S1(E)	8	#4	5'-3"	U
S2(E)	44	#4	5'-6"	U
S3(E)	16	#4	4'-8"	U
S4(E)	16	#4	3'-11"	U
U(E)	12	#5	3'-8"	U
U1(E)	2	#4	8'-7"	U

Note: See sheet 10 of 16 for additional details and Bill of Material.

FILE NAME = 53173-bridge sheets.dgn

DESIGNED - K. HEFFERN
DRAWN - C. BECKER
CHECKED - C. EPPERLY
DATE - NOVEMBER 2010

REVISED -
REVISED -
REVISED -
REVISED -

STATE OF ILLINOIS
DEPARTMENT OF TRANSPORTATION

17"x48" PPC DECK BEAM (INTERIOR SPAN)
STRUCTURE NO. 082-4158

SCALE: N/A SHEET NO. 9 OF 16 SHEETS STA. 34+16.75 TO STA. 35+27.25

F.A. RTE.	SECTION	COUNTY	TOTAL SHEETS	SHEET NO.
	08-18101-04-BR	ST. CLAIR	16	9
PROJECT BROS-163(32)		CONTRACT NO. 97466		
ILLINOIS FED. AID PROJECT				