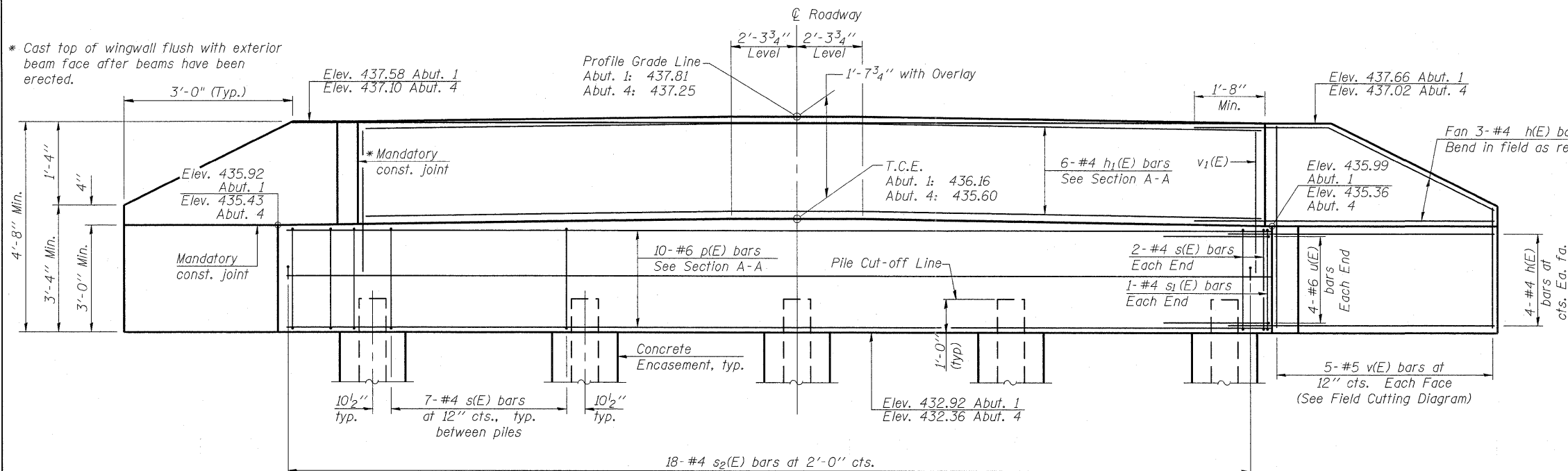
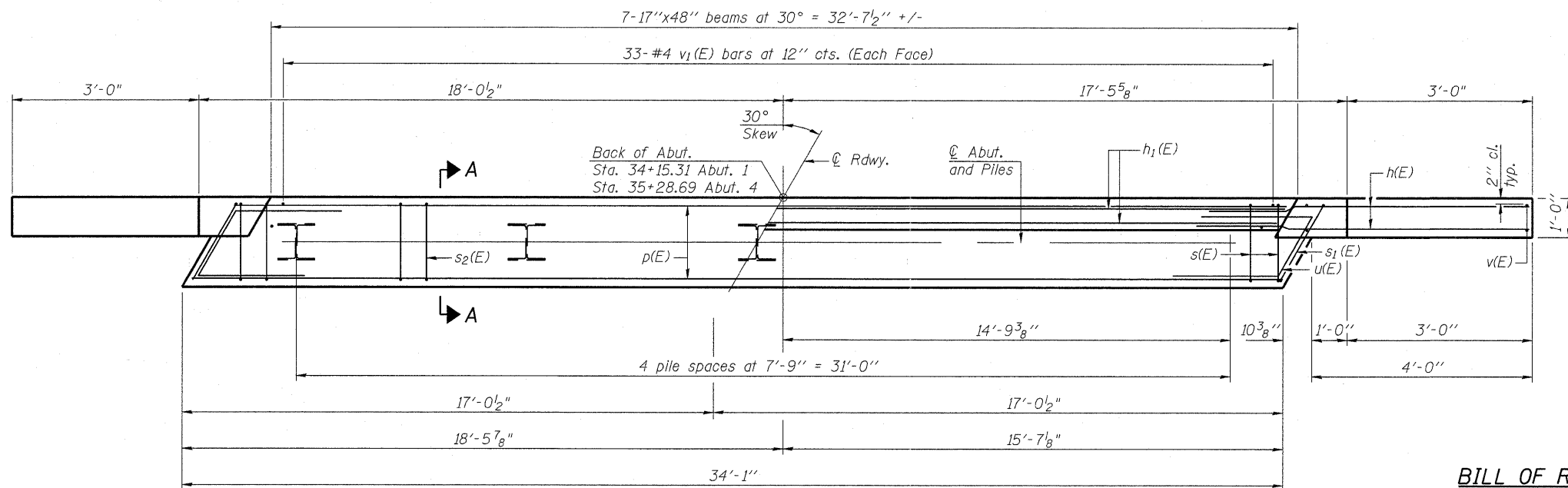


* Cast top of wingwall flush with exterior beam face after beams have been erected.



ELEVATION

Abut. 1: Looking West
Abut. 2: Looking East

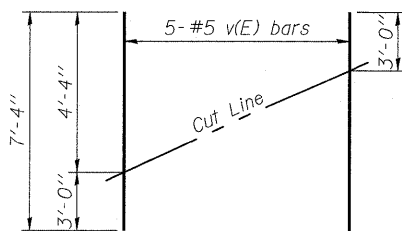


PLAN

PILE DATA

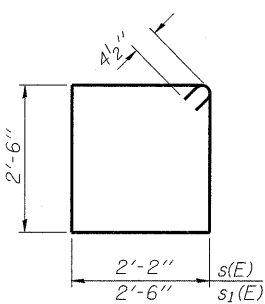
Type: HP12x53
Nominal Required Bearing: 182 k/pile
Factored Resistance Available: 210 k/pile
Abut. 1:
No. Production Piles: 4
No. Test Piles: 1
Abut. 4:
No. Production Piles: 5
No. Test Piles: 0

Est. Length: 33 Ft. (Abut. 1)
33 Ft. (Abut. 4)

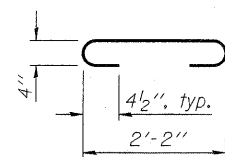


FIELD CUTTING DIAGRAM

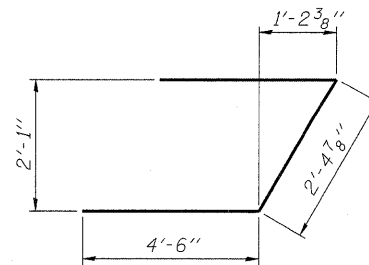
Order v(E) full length. Cut as shown and use remainder of bars in opposite face.



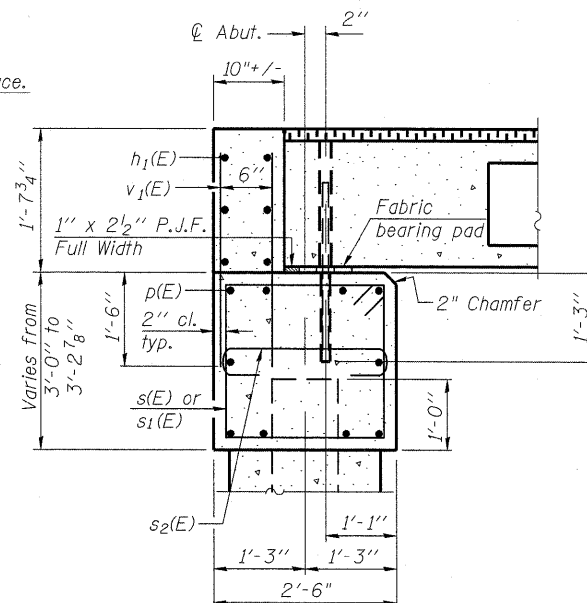
BARS s(E) & s1(E)



BAR s2(E)



BAR u(E)



SECTION A-A

(Dimensions are at Rt. L's)

**BILL OF MATERIAL
ABUTMENTS 1 & 4**

		Abut. 1	Abut. 4
Concrete Structures	Cu. Yd.	12.9	12.9
Reinforcement Bars, Epoxy Coated	Pound	1360	1360
Furnishing Steel Piles, HP12x53	Foot	132	165
Driving Piles	Foot	132	165
Test Pile, Steel HP12x53	Each	1	0
Pile Shoes	Each	5	5
Concrete Encasement	Cu. Yd.	1.8	1.8
Controlled Low-Strength Material	Cu. Yd.	14.5	14.5

For details of piles including Seismic Pile Anchorage, Pile Shoes and Concrete Encasement, see sheet 14 of 16.

**BILL OF REINFORCEMENT
EACH ABUTMENT**

Bar	No.	Size	Length	Shape
h(E)	28	#4	5'-9"	—
h1(E)	6	#4	32'-3"	—
p(E)	10	#6	33'-9"	—
s(E)	32	#4	10'-1"	□
s1(E)	2	#4	10'-9"	□
s2(E)	18	#4	3'-2"	U
u(E)	8	#6	11'-5"	J
v(E)	10	#5	7'-4"	—
v1(E)	66	#4	3'-0"	—

FILE NAME = 53173-bridge sheets.dgn

DESIGNED -	K. HEFFERN	REVISED -	
DRAWN -	C. BECKER	REVISED -	
CHECKED -	C. EPPERLY	REVISED -	
DATE -	NOVEMBER 2010	REVISED -	

**STATE OF ILLINOIS
DEPARTMENT OF TRANSPORTATION**

**ABUTMENTS 1 & 4
STRUCTURE NO. 082-4158**

SCALE: N/A SHEET NO. 11 OF 16 SHEETS STA. 34+16.75 TO STA. 35+27.25

F.A. RTE.	SECTION	COUNTY	TOTAL SHEETS	SHEET NO.
	08-18101-04-BR	ST. CLAIR	16	11
PROJECT BROS-163(32)		CONTRACT NO. 97466		
ILLINOIS FED. AID PROJECT				