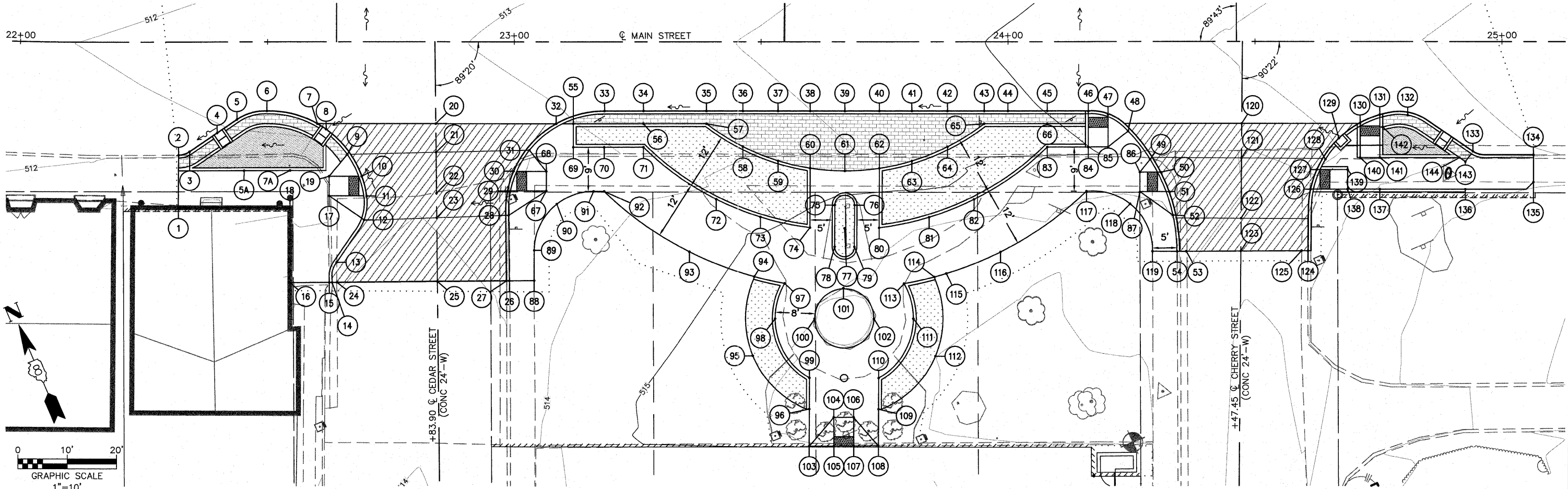


PT. NO.	STATION	OFFSET	ELEVATION	LOCATION	PT. NO.	STATION	OFFSET	ELEVATION	LOCATION	PT. NO.	STATION	OFFSET	ELEVATION	LOCATION	PT. NO.	STATION	OFFSET	ELEVATION	LOCATION	
1	22+31.95	33.64 RT	512.55 ME	SW	41	23+80.55	14.00 RT	514.39 ME	EOP	81	23+84.06	35.61 RT	515.98	SW	121	24+47.31	23.59 RT	515.63	CL	
2	22+32.00	22.93 RT	511.68 ME	EOP	42	23+87.76	14.00 RT	514.58 ME	EOP	82	23+93.15	31.97 RT	516.16	SW	122	24+47.23	35.88 RT	516.01	CL	
3	22+34.24	22.24 RT	511.75	EOP	43	23+95.21	14.00 RT	514.74 ME	EOP	83	24+07.97	21.33 RT	516.03	SW	123	24+47.19	42.57 RT	516.50	CL	
4	22+39.79	18.46 RT	511.95	EOP	44	24+00.00	14.00 RT	514.84 ME	EOP	84	24+16.29	21.33 RT	515.56	SW	124	24+60.81	42.50 RT	516.38-516.78	FL-BC	
5	22+43.79	15.68 RT	512.06	EOP	45	24+07.97	14.00 RT	515.02 ME	EOP	85	24+26.75	21.34 RT	515.64	SW	125	24+59.48	42.49 RT	516.43 ME	EOP	
5A	22+45.28	26.09 RT	512.61-512.94	SW-BC	46	24+16.29	14.06 RT	515.19 ME	EOP	86	24+26.75	26.44 RT	515.74	SW	126	24+61.26	29.94 RT	516.07 ME	EOP	
6	22+49.90	14.00 RT	512.17	EOP	47	24+20.29	14.76 RT	515.25 ME	EOP	87	24+26.75	30.44 RT	515.82	SW	127	24+62.54	25.94 RT	515.97 ME	EOP	
7	22+60.12	16.58 RT	512.16	EOP	48	24+24.35	18.14 RT	515.63-515.30	BC-EOP	88	23+04.08	48.50 RT	513.47 ME	SW	128	24+64.29	23.85 RT	516.40	BC	
7A	22+54.58	26.09 RT	512.75-513.08	SW-BC	49	24+28.80	23.84 RT	515.77-515.44	BC-EOP	89	23+04.08	42.34 RT	513.36	SW	129	24+67.00	19.57 RT	516.11	EOP	
8	22+61.90	17.70 RT	512.16	EOP	50	24+30.94	26.45 RT	515.50	EOP	90	23+08.63	32.92 RT	513.49	SW	130	24+71.30	16.47 RT	516.24 ME	EOP	
9	22+66.14	22.86 RT	512.73	BC	51	24+32.67	30.45 RT	515.59 ME	EOP	91	23+16.08	30.33 RT	513.82	SW	131	24+75.30	14.79 RT	516.40 ME	EOP	
10	22+69.08	27.23 RT	512.31	EOP	52	24+33.44	35.25 RT	516.01-515.70	BC-EOP	92	23+18.21	30.34 RT	513.87	SW	132	24+80.93	14.88 RT	517.10	BC	
11	22+70.09	31.26 RT	512.39	EOP	53	24+36.13	42.62 RT	515.94	CL	93	23+35.51	42.65 RT	514.70	SW	133	24+94.14	22.22 RT	516.67 ME	EOP	
12	22+69.60	36.15 RT	512.90-512.40	BC-EOP	54	24+34.31	42.63 RT	516.22 ME	BC	94	23+48.76	47.72 RT	515.30	SW	134	25+06.39	22.92 RT	516.89 ME	EOP	
13	22+64.07	44.79 RT	513.35-512.85	BC-EOP	55	23+11.96	16.58 RT	513.60	SW	95	23+48.38	63.71 RT	515.60	LSA	135	25+06.39	28.48 RT	517.61 ME	SW	
14	22+63.14	48.90 RT	512.96 ME	FL	56	23+26.16	16.58 RT	513.90	SW	96	23+59.85	74.87 RT	516.40	SW	136	24+92.61	29.94 RT	517.32-517.32	SW-BC	
15	22+62.56	48.91 RT	513.31 ME	BC	57	23+38.93	16.58 RT	514.16	SW	97	23+54.81	49.07 RT	515.65	SW	137	24+75.30	29.94 RT	516.63-517.08	SW-BC	
16	22+54.60	48.92 RT	513.33 ME	SW	58	23+46.31	21.22 RT	514.39	SW	98	23+52.89	56.20 RT	515.84	SW	138	24+68.78	29.94 RT	516.50-517.00	SW-BC	
17	22+62.51	31.26 RT	512.87	SW	59	23+53.44	24.09 RT	514.57	SW	99	23+59.87	68.26 RT	516.03	SW	139	24+68.78	25.94 RT	516.42	SW	
18	22+54.58	33.73 RT	512.90	SW	60	23+59.96	25.60 RT	514.72	SW	100	23+60.89	56.20 RT	516.00	SW	140	24+71.30	23.50 RT	516.42	SW	
19	22+62.50	27.23 RT	512.79	SW	61	23+66.96	26.15 RT	514.86	SW	101	23+66.71	50.03 RT	515.95	SW	141	24+75.30	23.50 RT	516.50-517.27	SW-BC	
20	22+84.09	16.58 RT	512.52	CL	62	23+73.96	25.63 RT	514.96	SW	102	23+72.89	56.20 RT	516.33	SW	142	24+75.88	17.30 RT	516.94-517.27	BRICK-BC	
21	22+84.16	22.40 RT	512.43	CL	63	23+80.55	24.14 RT	515.08	SW	103	23+59.83	82.35 RT	515.40 ME	EOP	143	24+92.61	24.31 RT	517.21	SW	
22	22+84.25	30.75 RT	512.58	CL	64	23+87.76	21.25 RT	515.22	SW	104	23+64.80	76.33 RT	516.04	SW	144	24+91.43	23.50 RT	517.14-517.40	SW-BC	
23	22+84.31	35.73 RT	512.71	CL	65	23+95.21	16.58 RT	515.28	SW	105	23+64.83	82.33 RT	515.56 ME	EOP						
24	22+64.14	48.88 RT	512.97 ME	EOP	66	24+07.97	16.58 RT	515.56	SW	106	23+68.80	76.31 RT	516.12	SW						
25	22+84.46	48.69 RT	513.16 ME	CL	67	23+06.50	30.22 RT	513.42	SW	107	23+68.83	82.31 RT	515.67 ME	EOP						
26	22+99.04	48.55 RT	513.36 ME	BC	68	23+05.50	26.22 RT	513.49	SW	108	23+73.83	82.29 RT	515.81	EOP						
27	22+98.46	48.55 RT	512.92	EOP	69	23+11.96	21.33 RT	513.41	SW	109	23+68.80	76.31 RT	516.40	SW						
28	22+98.88	35.21 RT	513.28	BC	70	23+18.22	21.33 RT	513.71	SW	110	23+73.87	68.29 RT	516.20	SW						
29	22+98.67	30.24 RT	512.78	EOP	71	23+26.18	21.35 RT	513.96	SW	111	23+80.89	56.20 RT	516.27	SW						
30	22+99.90	26.18 RT	512.84	EOP	72	23+40.91	31.93 RT	514.63	SW	112	23+85.37	63.81 RT	516.80	LSA						
31	23+03.08	21.94 RT	513.15	BC	73	23+49.90	35.56 RT	514.95	SW	113	23+79.01	49.13 RT	516.11	SW						
32	23+08.47	16.58 RT	512.88	EOP	74	23+59.94	37.71 RT	515.54	SW	114	23+85.07	47.80 RT	516.18	SW						
33	23+18.31	14.00 RT	513.20	EOP	75	23+64.93	33.13 RT	516.05	BC	115	23+87.56	47.09 RT	516.22	SW						
34	23+26.16	14.00 RT	513.36 ME	EOP	76	23+68.95	33.14 RT	516.13	BC	116	23+98.53	42.70 RT	516.28	SW						
35	23+38.93	14.00 RT	513.62 ME	EOP	77	23+66.94	37.84 RT	515.68	GROUND	117	24+15.94	30.33 RT	515.74	SW						
36	23+46.31	14.00 RT	513.76 ME	EOP	78	23+64.95	41.64 RT	516.22	BC	118	24+24.77	32.93 RT	515.88	SW						
34	23+53.44	14.00 RT	513.88 ME	EOP	79	23+68.93	41.65 RT	516.30	BC	119	24+29.31	42.56 RT	516.32 ME	SW						
38	23+59.96	14.00 RT	514.00 ME	EOP	80	23+73.94	37.74 RT	515.82	SW	120	24+47.35	16.58 RT	515.80	CL						
39	23+66.96	14.00 RT	514.13 ME	EOP																
40	23+73.96	14.00 RT	514.24 ME	EOP																



FILE NAME = H:\P25040\DWG\PHASE 1\25040-DESIGN.DWG	USER NAME = ASHLEIGH ENGMANN	DESIGNED - SLW	REVISED -	STATE OF ILLINOIS DEPARTMENT OF TRANSPORTATION	GRADING DETAILS	F.A.U. RTE. 9302	SECTION 06-00045-00-SW	COUNTY MONROE	TOTAL SHEETS 24	SHEET NO. 10
PLOT SCALE = 4 1/8" = 1'	CHECKED - TLC	DATE - 2010-06-11	REVISED -	SCALE:	SHEET NO. 1 OF 2 SHEETS	STA. 22+29.00 TO STA. 25+06.39	COLUMBIA	ILLINOIS	FED. AID PROJECT	CONTRACT NO. 97468