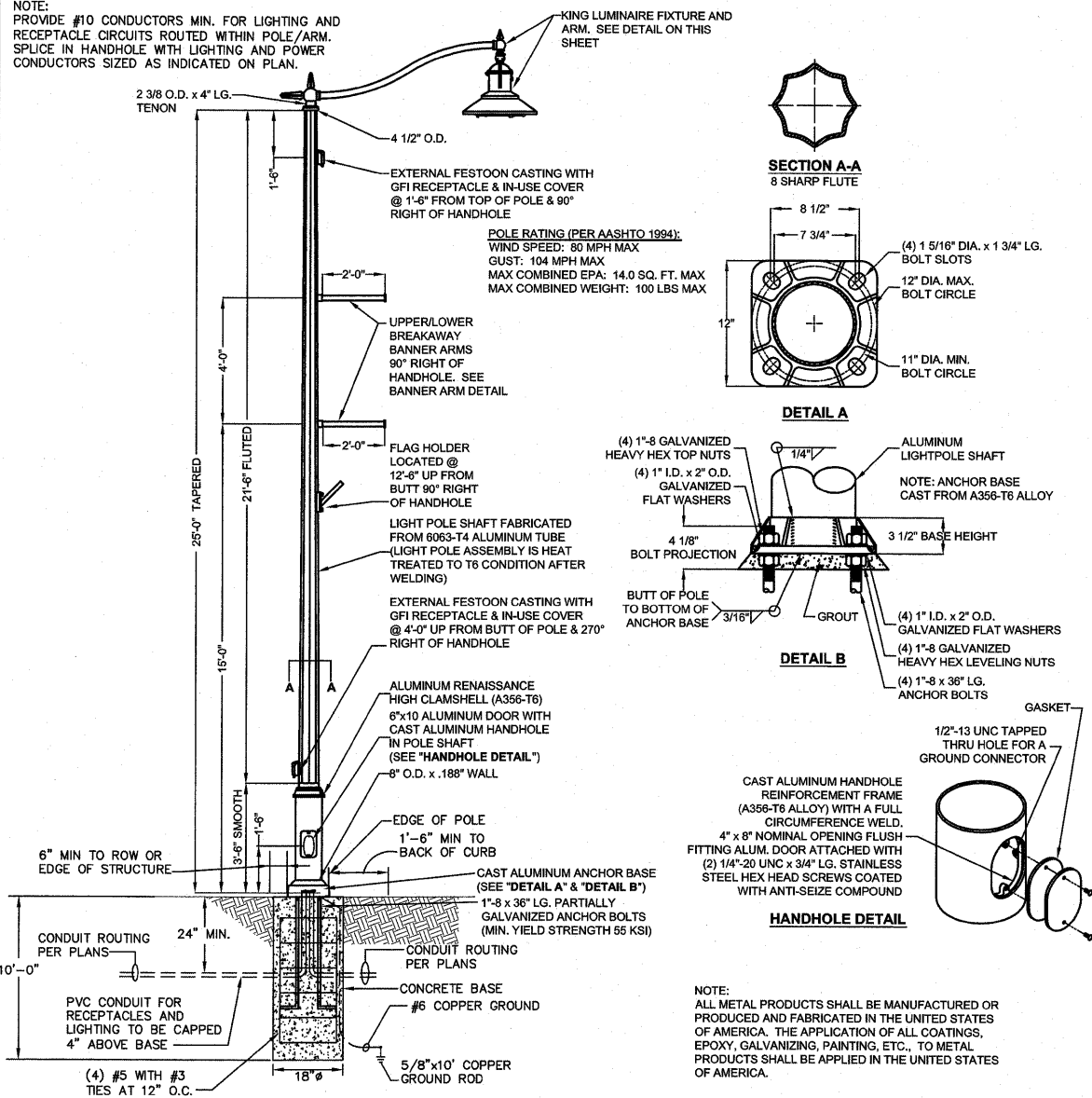


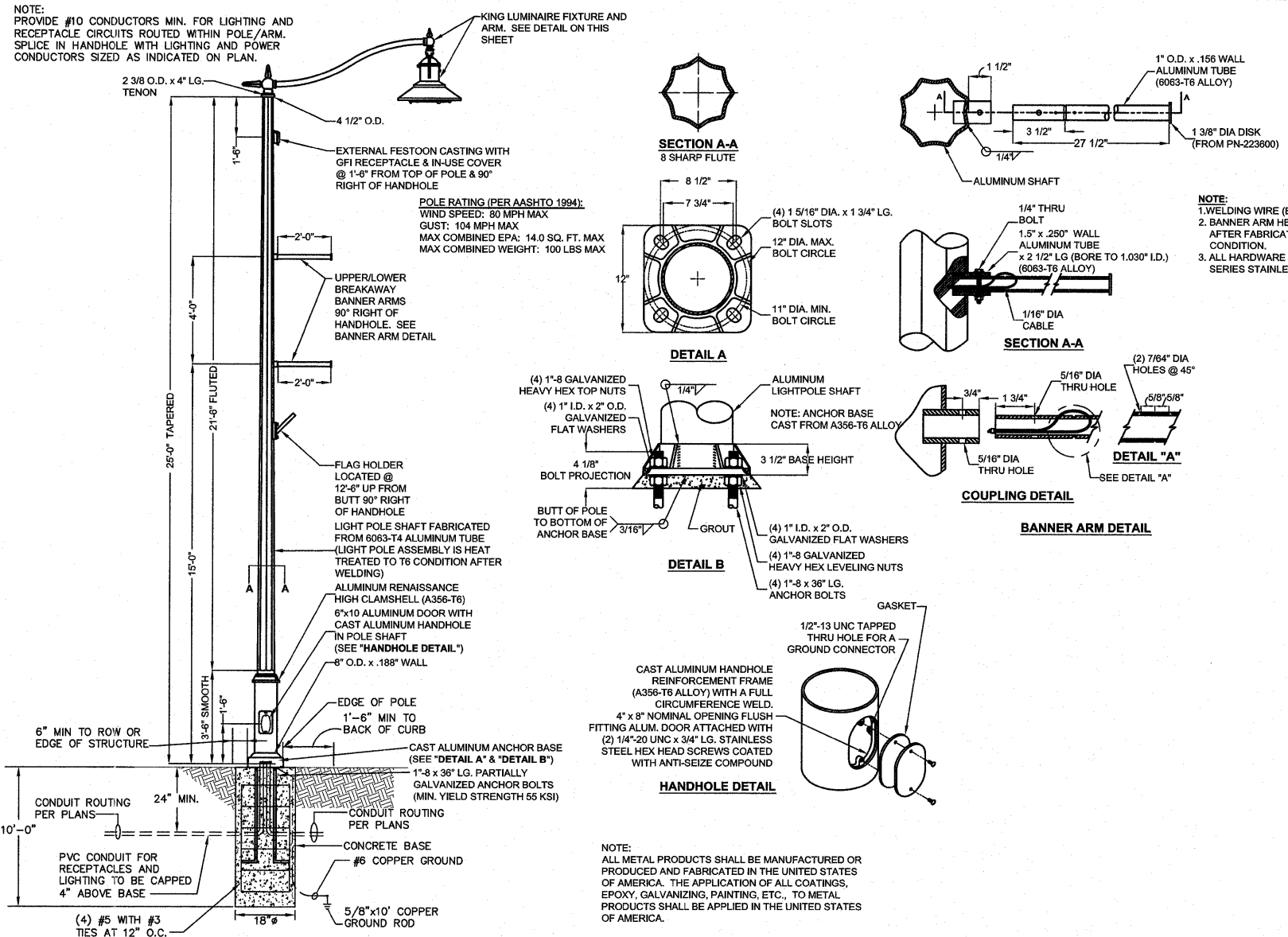
NOTE: PROVIDE #10 CONDUCTORS MIN. FOR LIGHTING AND RECEPTACLE CIRCUITS ROUTED WITHIN POLE/ARM. SPLICE IN HANDHOLE WITH LIGHTING AND POWER CONDUCTORS SIZED AS INDICATED ON PLAN.



FIXTURE TYPE SA POLE DETAIL

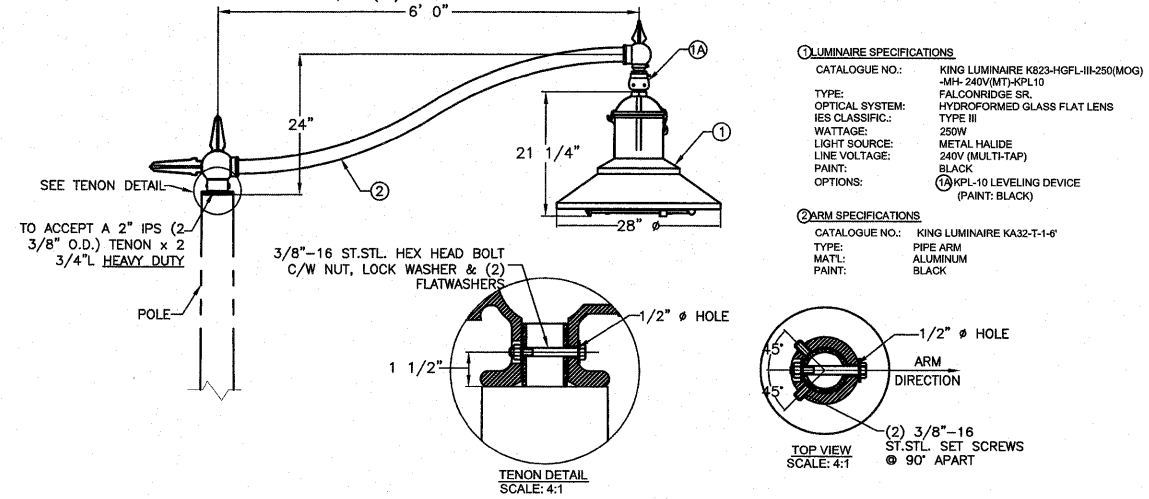
NOT TO SCALE PAY CODES: DECOR LT/POLE TYPE - SA AND LIGHT POLE FDN, SPL(FT)

NOTE: PROVIDE #10 CONDUCTORS MIN. FOR LIGHTING AND RECEPTACLE CIRCUITS ROUTED WITHIN POLE/ARM. SPLICE IN HANDHOLE WITH LIGHTING AND POWER CONDUCTORS SIZED AS INDICATED ON PLAN.



FIXTURE TYPE SB POLE DETAIL

NOT TO SCALE PAY CODES: DECOR LT/POLE TYPE - SB AND LIGHT POLE FDN, SPL(FT)



FIXTURE TYPE SA AND SB FIXTURE DETAIL

NOT TO SCALE

FILE NAME = M:\624-25\CAD\ELECTRICAL\ SHEETS.DWG	USER NAME = JEFF NOLTE	DESIGNED - JEN	REVISED -
	PLOT SCALE = 4 1/4" = 1'	DRAWN - JEN	REVISED -
	PLOT DATE = 2011-06-17	CHECKED - BEC	REVISED -
		DATE - 2011-05-13	REVISED -

STATE OF ILLINOIS
DEPARTMENT OF TRANSPORTATION

ELECTRICAL DETAILS

SCALE: AS NOTED SHEET NO. 3 OF 3 SHEETS STA. _____ TO STA. _____

F.A.U. RTE. 9302	SECTION 06-0045-00-SW	COUNTY MONROE	TOTAL SHEETS 24	SHEET NO. 20
COLUMBIA		ILLINOIS FEDERAL AID PROJECT		

NOTE:
1. WELDING WIRE (ER4043).
2. BANNER ARM HEAT TREATED AFTER FABRICATION TO T6 CONDITION.
3. ALL HARDWARE IS 300 SERIES STAINLESS STEEL.